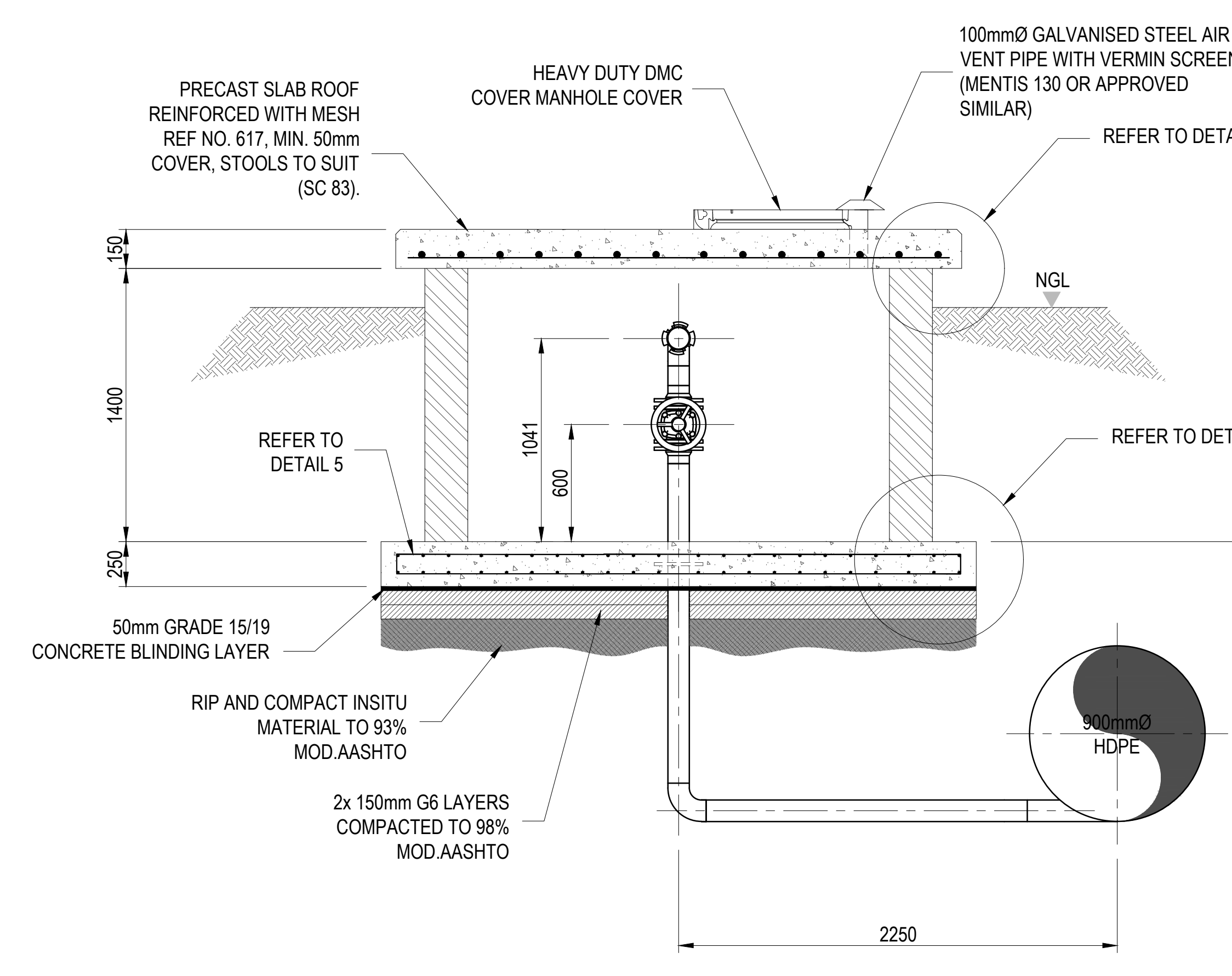
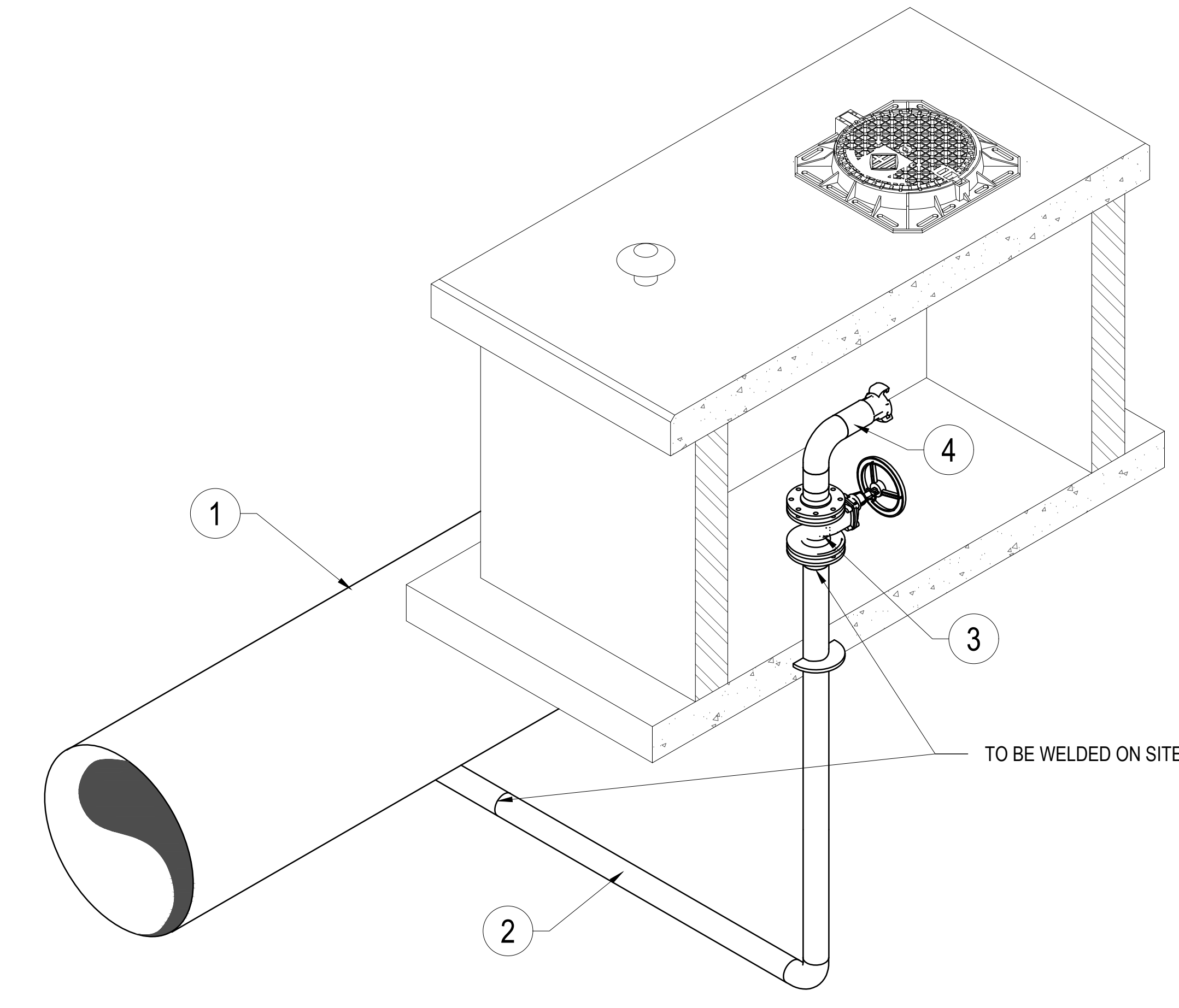


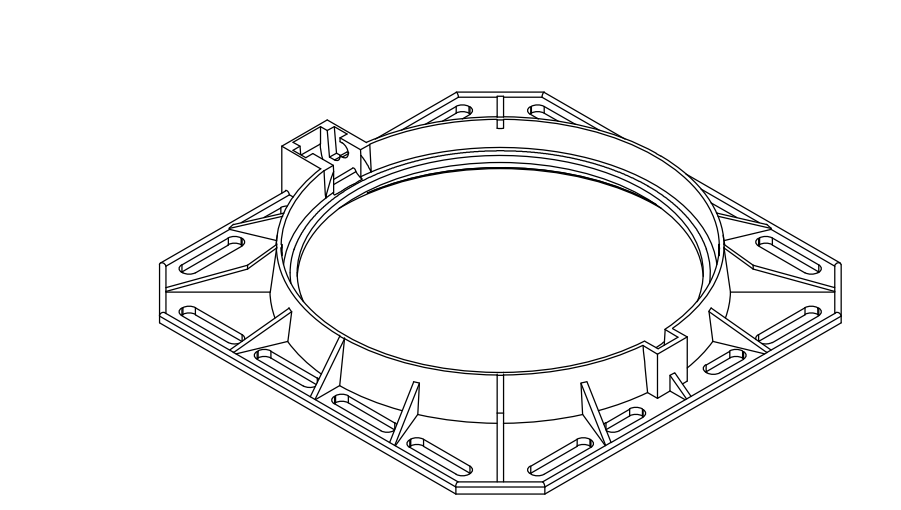
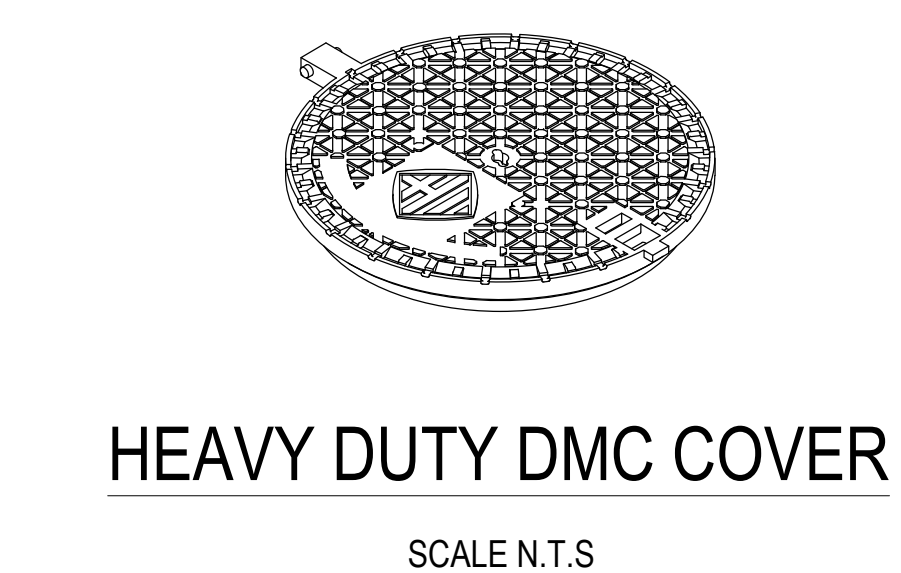
PLAN VIEW
SCOUR VALVE CHAMBER
SCALE 1:30



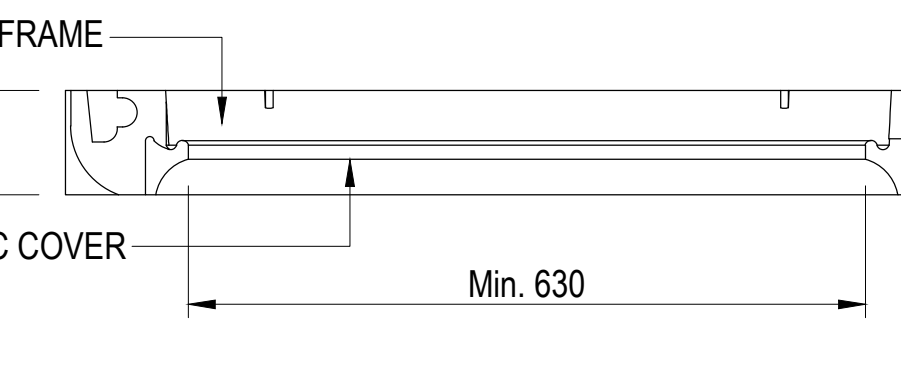
SECTION A-A
SCOUR VALVE CHAMBER
SCALE 1:30



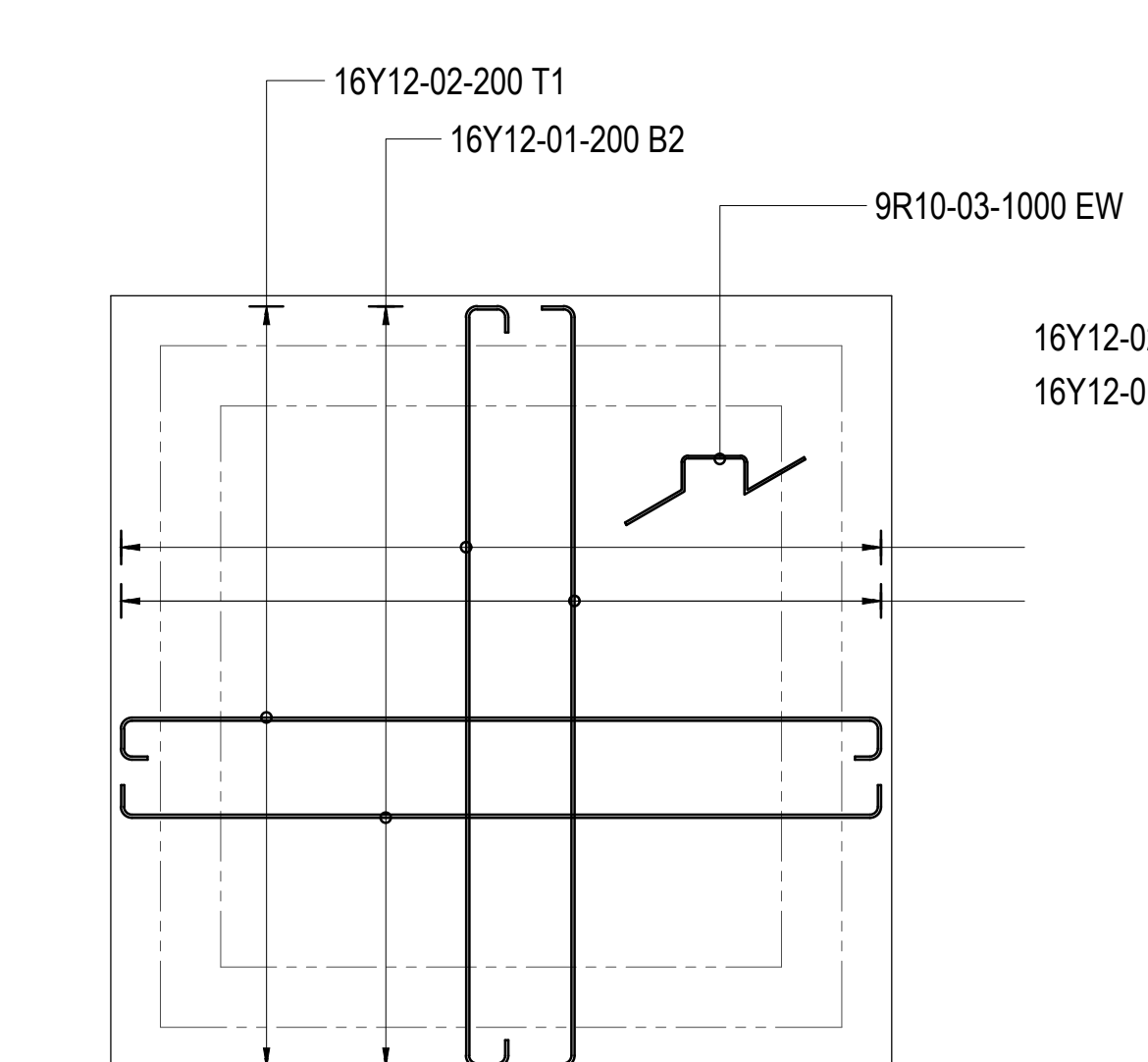
3D VIEW
SCOUR VALVE CHAMBER
SCALE N.T.S



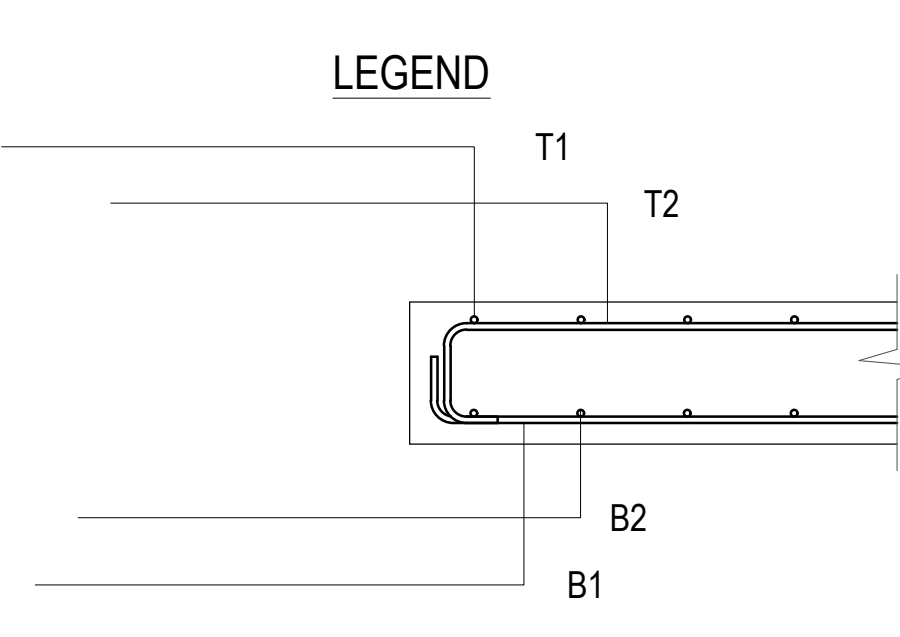
HEAVY DUTY DMC COVER
SCALE N.T.S



HEAVY DUTY DMC COVER AND
FRAME
SCALE N.T.S



DETAIL 5: VALVE CHAMBER FLOOR SLAB
BENDING SCHEDULE AND DETAIL
SCALE N.T.S

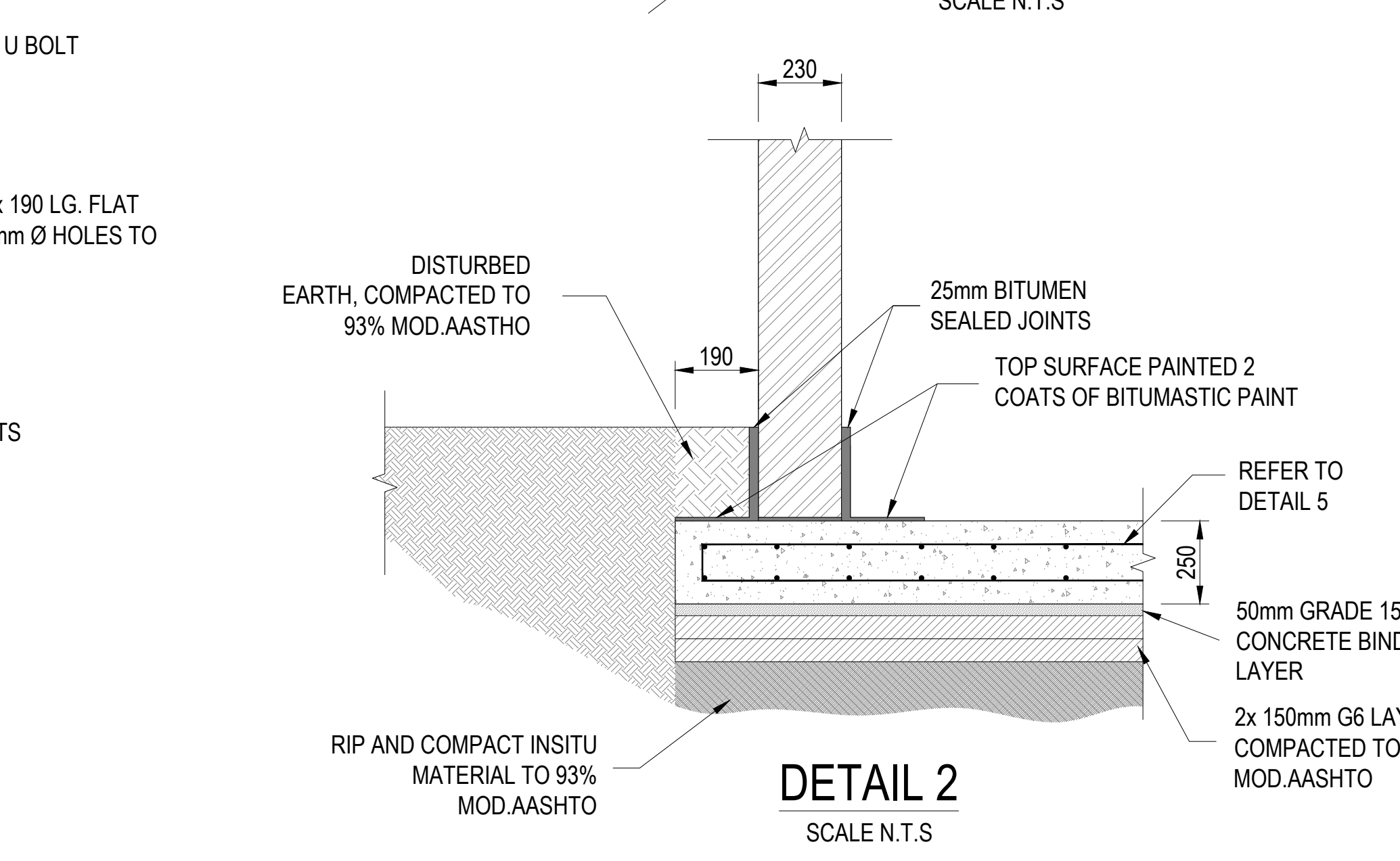
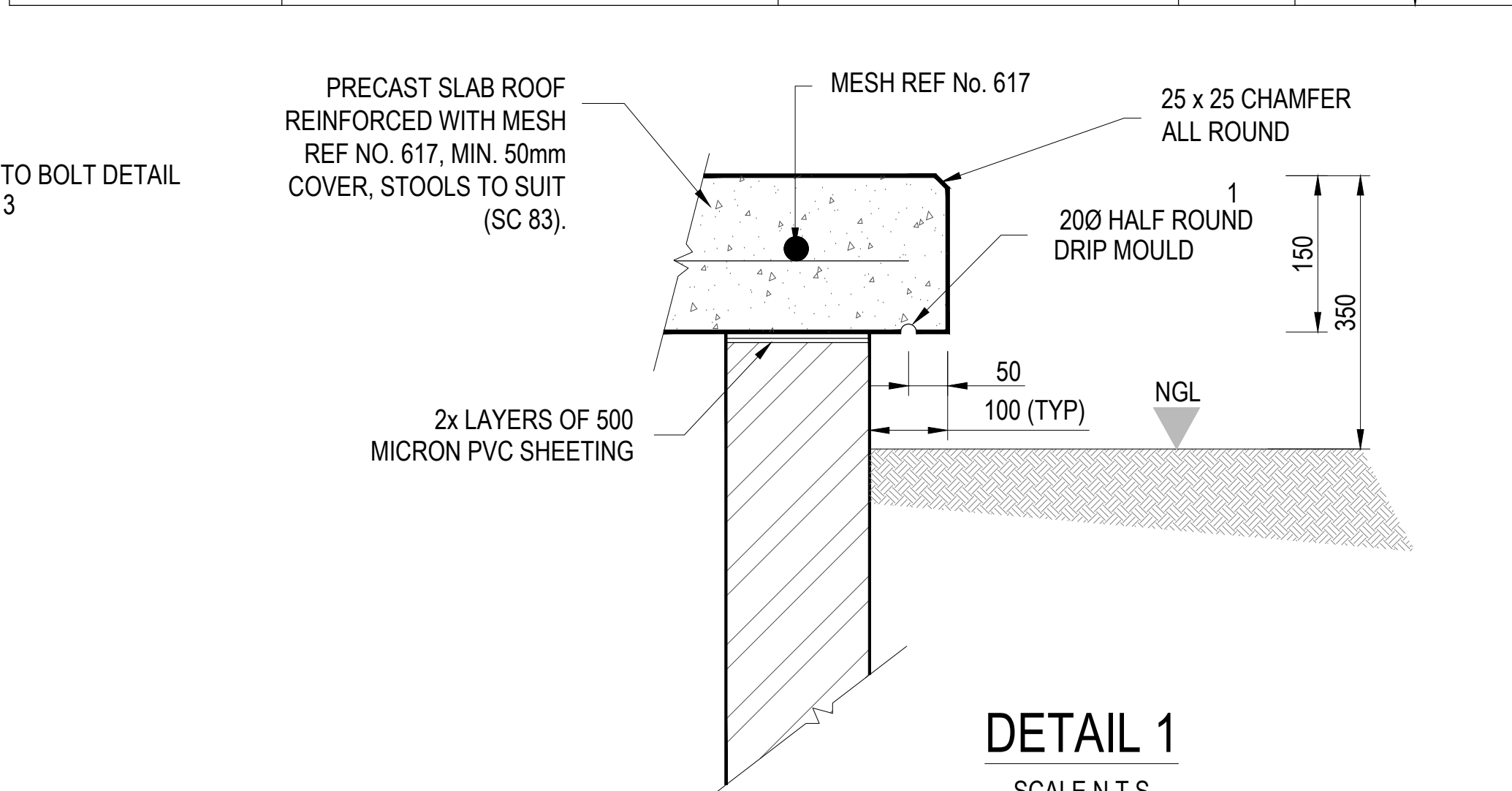


REINFORCEMENT NOTES:

- Cover to reinforcement to be 40mm or as shown.
- Stools to stand on layer B1 and support layer T1.

R	Round mild steel bars to S.A.N.S. 920
Y	Round deformed high tensile bars to S.A.N.S. 920 (minimum yield stress 450 MPa.)

PIPE FITTINGS AND SCHEDULE				FLANGE TABLE
ITEM NR.	DESCRIPTION	DIMENSIONS	QTY.	
1	900NB HDPE STRAIGHT PIPE, WITH 110NB STUB AND COLLAR, ECCENTRIC BOTTOM FLAT.		1	
2	110mmØ HDPE CUSTOM PIECE PIPE, WITH 90 DEG ELBOW, AND STUB AND BACKING RING ONE END, OTHER END OPEN. PUDDLE FLANGE TO BE POSITIONED ON SITE.		1	
3	150NB WASTEWATER RESILIENT SEATED GATE VALVE. PN16		1	
4	110mmØ HDPE PIPE WITH ELBOW, STUB AND BACKING RING ONE END, AND 100NB HOSE CONNECTOR (FEMALE) ON OTHER END.		1	



MEMBER	No OF	BARS PER MEMB	DIA.	LENGTH	TOTAL NUM-BER	MARK	S C	BENDING				
								A	B	C	D	E/r
FLOOR SLAB	1	32	Y12	3100	32	01	35	2900				
		32	Y12	3300	32	02	55	100	160	2900	160	(100)
		9	R10	950	9	03	83	250	140	250	(250)	
	8	10	12	16	20	25	32	40	TOT	Date	20-09-2024	
R		5						5	Det. by	CIM		
Y			182					182	Ref Dwg	VCD-S02		
TOT		5	182					187	Job No	JW14460		
INCHANGA SEWER RISING MAIN UPGRADE SCOUR VALVE CHAMBER FLOOR SLAB REINFORCEMENT DETAILS AND BENDING SCHEDULE								Revision	C			
								Schedule No	S01/02			

COPYRIGHT:

This document and all the information thereon remains the property of Johannesburg Water SOC Ltd and may not be copied, reproduced or transmitted in part or in full without the written consent of Johannesburg Water SOC Ltd. This document should not be relied on nor used in circumstances other than those for which it was originally prepared and for which Johannesburg Water SOC Ltd was commissioned, as defined on this drawing. Refer to the contract for full terms and conditions.

Johannesburg Water SOC Ltd shall not be liable for the consequences of using this document other than for the purpose for which it was commissioned. Any user and any other person using or relying on the document for such other purpose will by such use or reliance be taken to confirm his agreement to indemnify Johannesburg Water SOC Ltd for all loss or damage results there from.

GENERAL NOTES:

- ALL LOAD BEARING BRINGWORK SHALL BE LAID IN ACCORDANCE WITH SANS 10164 AND SANS 10145.
- ALL BRICKWORK TO BE PLASTERED EXTERNALLY AND INTERNALLY TO ENSURE WATERTIGHT CHAMBER. USE ENGINEERING BRICKS.
- BRICK REINFORCEMENT: APPROVED GALVANISING BRICKFORCE IN EVERY LAYER OF FOUNDATION WALLS.
- CONCRETE FOR THE BASE AND ROOF SLAB TO BE GRADE 30. COVER TO REINFORCEMENT = 40mm (DEPENDANT ON GROUND WATER LEVEL ON SITE).
- ALL FLANGES TO TABLE 1600 OF SANS 1123. HDPE FLANGE CONNECTIONS TO INCLUDE STUB AND BACKING RING.
- HDPE PIPES AND FITTINGS SHALL BE IN ACCORDANCE WITH SANS 4427:2008.
- CHAMBER DIMENSION AND DEPTH ARE SUBJECT TO CHANGE UPON CONFIRMATION OF THE PIPE LOCATION AND DEPTH ON SITE.
- FITTINGS ARE SUBJECT TO CHANGE UPON CONFIRMATION OF THE STANDARD PIPE MATERIALS FROM SUPPLIERS. CONTRACTOR TO PROVIDE UPDATED DRAWINGS FOR APPROVAL PRIOR TO MANUFACTURE.
- EVERY CHAMBER MUST HAVE A 100mm DIAMETER VENT PIPE WITH MOSQUITO GAUZE.
- PEDESTALS TO BE PROVIDED AS DIRECTED BY THE ENGINEER AT SITE.
- VALVE KEY HOLES TO BE PROVIDED IN THE ROOF ABOVE EVERY VALVE OR AS DIRECTED.
- PIPES TO BE WRAPPED WITH 6mm THICK MALTHOID WRAPPING THROUGH WALLS.
- GATE VALVES SHALL BE DOUBLE FLANGED WITH NON-RISING SPINDLE. THE DIRECTION OF CLOSING, WHICH SHALL BE CLOCKWISE WHEN VIEWED FROM ABOVE, MUST BE CLEARLY INDICATED ON THE HANDWHEEL OF EACH VALVE. GATE VALVES SHALL BE OF STANDARD WASTEWATER WORKS PATTERN COMPLYING WITH THE REQUIREMENTS, AS SPECIFIED FOR EACH APPLICATION.
- AIR VALVES SHALL HAVE SINGLE OR DOUBLE ORIFICE, AS SPECIFIED. AIR VALVES SHALL BE OF STANDARD WASTEWATER WORKS PATTERN COMPLYING WITH THE REQUIREMENTS, AS SPECIFIED FOR EACH APPLICATION.

REFER TO DRAWING No:

JW14460-CRA-GACLP-S01:	GENERAL LAYOUT PLAN
JW14460-CRA-COR-S01:	COORDINATES TABLE
JW14460-CRA-LAY-S01:	LAYOUT PLAN PACKAGE 1 SHEET 1
JW14460-CRA-LAY-S02:	LAYOUT PLAN PACKAGE 2 SHEET 1
JW14460-CRA-LAY-S03:	LAYOUT PLAN PACKAGE 2 SHEET 2
JW14460-CRA-LAY-S04:	LAYOUT PLAN PACKAGE 2 SHEET 3
JW14460-CRA-LS-S01:	PACKAGE 1 LONG SECTION SHEET 1
JW14460-CRA-LS-S02:	PACKAGE 1 LONG SECTION SHEET 2
JW14460-CRA-LS-S03:	PACKAGE 1 LONG SECTION SHEET 3
JW14460-CRA-LS-S04:	PACKAGE 1 LONG SECTION SHEET 4
JW14460-CRA-LS-S05:	PACKAGE 1 LONG SECTION SHEET 5
JW14460-CRA-LS-S06:	PACKAGE 1 LONG SECTION SHEET 6
JW14460-CRA-LS-S07:	PACKAGE 1 LONG SECTION SHEET 7
JW14460-CRA-LS-S08:	PACKAGE 1 LONG SECTION SHEET 8
JW14460-CRA-LS-S09:	PACKAGE 1 LONG SECTION SHEET 9
JW14460-CRA-LS-S10:	PACKAGE 1 LONG SECTION SHEET 10
JW14460-CRA-LS-S11:	PACKAGE 1 LONG SECTION SHEET 11
JW14460-CRA-LS-S12:	PACKAGE 1 LONG SECTION SHEET 12
JW14460-CRA-LS-S13:	PACKAGE 1 LONG SECTION SHEET 13
JW14460-CRA-LS-S14:	PACKAGE 1 LONG SECTION SHEET 14
JW14460-CRA-LS-S15:	PACKAGE 1 LONG SECTION SHEET 15
JW14460-CRA-LS-S16:	PACKAGE 1 LONG SECTION SHEET 16
JW14460-CRA-LS-S17:	PACKAGE 1 LONG SECTION SHEET 17
JW14460-CRA-LS-S18:	PACKAGE 1 LONG SECTION SHEET 18
JW14460-CRA-LS-S19:	PACKAGE 1 LONG SECTION SHEET 19
JW14460-CRA-LS-S20:	PACKAGE 1 LONG SECTION SHEET 20
JW14460-CRA-LS-S21:	PACKAGE 1 LONG SECTION SHEET 21
JW14460-CRA-LS-S22:	PACKAGE 1 LONG SECTION SHEET 22
JW14460-CRA-LS-S23:	PACKAGE 1 LONG SECTION SHEET 23
JW14460-CRA-LS-S24:	PACKAGE 1 LONG SECTION SHEET 24
JW14460-CRA-LS-S25:	PACKAGE 1 LONG SECTION SHEET 25
JW14460-CRA-LS-S26:	PACKAGE 1 LONG SECTION SHEET 26
JW14460-CRA-LS-S27:	PACKAGE 1 LONG SECTION SHEET 27
JW14460-CRA-LS-S28:	PACKAGE 1 LONG SECTION SHEET 28
JW14460-CRA-LS-S29:	PACKAGE 1 LONG SECTION SHEET 29
JW14460-CRA-LS-S30:	PACKAGE 1 LONG SECTION SHEET 30
JW14460-CRA-LS-S31:	PACKAGE 1 LONG SECTION SHEET 31
JW14460-CRA-LS-S32:	PACKAGE 1 LONG SECTION SHEET 32
JW14460-CRA-LS-S33:	PACKAGE 1 LONG SECTION SHEET 33
JW14460-CRA-LS-S34:	PACKAGE 1 LONG SECTION SHEET 34
JW14460-CRA-LS-S35:	PACKAGE 1 LONG SECTION SHEET 35
JW14460-CRA-LS-S36:	PACKAGE 1 LONG SECTION SHEET 36
JW14460-CRA-LS-S37:	PACKAGE 1 LONG SECTION SHEET 37
JW14460-CRA-LS-S38:	PACKAGE 1 LONG SECTION SHEET 38
JW14460-CRA-LS-S39:	PACKAGE 1 LONG SECTION SHEET 39
JW14460-CRA-LS-S40:	PACKAGE 1 LONG SECTION SHEET 40
JW14460-CRA-LS-S41:	PACKAGE 1 LONG SECTION SHEET 41
JW14460-CRA-LS-S42:	PACKAGE 1 LONG SECTION SHEET 42
JW14460-CRA-LS-S43:	PACKAGE 1 LONG SECTION SHEET 43
JW14460-CRA-LS-S44:	PACKAGE 1 LONG SECTION SHEET 44
JW14460-CRA-LS-S45:	PACKAGE 1 LONG SECTION SHEET 45
JW14460-CRA-LS-S46:	PACKAGE 1 LONG SECTION SHEET 46
JW14460-CRA-LS-S47:	PACKAGE 1 LONG SECTION SHEET 47
JW14460-CRA-LS-S48:	PACKAGE 1 LONG SECTION SHEET 48
JW14460-CRA-LS-S49:	PACKAGE 1 LONG SECTION SHEET 49
JW14460-CRA-LS-S50:	PACKAGE 1 LONG SECTION SHEET 50
JW14460-CRA-LS-S51:	PACKAGE 1 LONG SECTION SHEET 51
JW14460-CRA-LS-S52:	PACKAGE 1 LONG SECTION SHEET 52
JW14460-CRA-LS-S53:	PACKAGE 1 LONG SECTION SHEET 53
JW14460-CRA-LS-S54:	PACKAGE 1 LONG SECTION SHEET 54
JW14460-CRA-LS-S55:	PACKAGE 1 LONG SECTION SHEET 55
JW14460-CRA-LS-S56:	PACKAGE 1 LONG SECTION SHEET 56
JW14460-CRA-LS-S57:	PACKAGE 1 LONG SECTION SHEET 57
JW14460-CRA-LS-S58:	PACKAGE 1 LONG SECTION SHEET 58
JW14460-CRA-LS-S59:	PACKAGE 1 LONG SECTION SHEET 59
JW14460-CRA-LS-S60:	PACKAGE 1 LONG SECTION SHEET 60
JW14460-CRA-LS-S61:	PACKAGE 1 LONG SECTION SHEET 61
JW14460-CRA-LS-S62:	PACKAGE 1 LONG SECTION SHEET 62
JW14460-CRA-LS-S63:	PACKAGE 1 LONG SECTION SHEET 63
JW14460-CRA-LS-S64:	PACKAGE 1 LONG SECTION SHEET 64
JW14460-CRA-LS-S65:	PACKAGE 1 LONG SECTION SHEET 65
JW14460-CRA-LS-S66:	PACKAGE 1 LONG SECTION SHEET 66
JW14460-CRA-LS-S67:	PACKAGE 1 LONG SECTION SHEET 67
JW14460-CRA-LS-S68:	PACKAGE 1 LONG SECTION SHEET 68
JW14460-CRA-LS-S69:	PACKAGE 1 LONG SECTION SHEET 69
JW14460-CRA-LS-S70:	PACKAGE 1 LONG SECTION SHEET 70
JW14460-CRA-LS-S71:	PACKAGE 1 LONG SECTION SHEET 71
JW14460-CRA-LS-S72:	PACKAGE 1 LONG SECTION SHEET 72
JW14460-CRA-LS-S73:	PACKAGE 1 LONG SECTION SHEET 73
JW14460-CRA-LS-S74:	PACKAGE 1 LONG SECTION SHEET 74
JW14460-CRA-LS-S75:	PACKAGE 1 LONG SECTION SHEET 75
JW14460-CRA-LS-S76:	PACKAGE 1 LONG SECTION SHEET 76
JW14460-CRA-LS-S77:	PACKAGE 1 LONG SECTION SHEET 77
JW14460-CRA-LS-S78:	PACKAGE 1 LONG SECTION SHEET 78
JW14460-CRA-LS-S79:	PACKAGE 1 LONG SECTION SHEET 79
JW14460-CRA-LS-S80:	PACKAGE 1 LONG SECTION SHEET 80
JW14460-CRA-LS-S81:	PACKAGE 1 LONG SECTION SHEET 81
JW14460-CRA-LS-S82:	PACKAGE 1 LONG SECTION SHEET 82
JW14460-CRA-LS-S83:	PACKAGE 1 LONG SECTION SHEET 83
JW14460-CRA-LS-S84:	PACKAGE 1 LONG SECTION SHEET 84
JW14460-CRA-LS-S85:	PACKAGE 1 LONG SECTION SHEET 85
JW14460-CRA-LS-S86:	PACKAGE 1 LONG SECTION SHEET 86
JW14460-CRA-LS-S87:	PACKAGE 1 LONG SECTION SHEET 87
JW14460-CRA-LS-S88:	PACKAGE 1 LONG SECTION SHEET 88
JW14460-CRA-LS-S89:	PACKAGE 1 LONG SECTION SHEET 89
JW14460-CRA-LS-S90:	PACKAGE 1 LONG SECTION SHEET 90
JW14460-CRA-LS-S91:	PACKAGE 1 LONG SECTION SHEET 91
JW14460-CRA-LS-S92:	PACKAGE 1 LONG SECTION SHEET 92
JW14460-CRA-LS-S93:	PACKAGE 1 LONG SECTION SHEET 93
JW14460-CRA-LS-S94:	PACKAGE 1 LONG SECTION SHEET 94
JW14460-CRA-LS-S95:	PACKAGE 1 LONG SECTION SHEET 95
JW14460-CRA-LS-S96:	PACKAGE 1 LONG SECTION SHEET 96
JW14460-CRA-LS-S97:	PACKAGE 1 LONG SECTION SHEET 97
JW14460-CRA-LS-S98:	PACKAGE 1 LONG SECTION SHEET 98
JW14460-CRA-LS-S99:	PACKAGE 1 LONG SECTION SHEET 99
JW14460-CRA-LS-S100:	PACKAGE 1 LONG SECTION SHEET 100
JW14460-CRA-LS-S101:	PACKAGE 1 LONG SECTION SHEET 101
JW14460-CRA-LS-S102:	PACKAGE 1 LONG SECTION SHEET 102
JW14460-CRA-LS-S103:	PACKAGE 1 LONG SECTION SHEET 103
JW14460-CRA-LS-S104:	PACKAGE 1 LONG SECTION SHEET 104
JW14460-CRA-LS-S105:	PACKAGE 1 LONG SECTION SHEET 105
JW14460-CRA-LS-S106:	PACKAGE 1 LONG SECTION SHEET 106
JW14460-CRA-LS-S107:	PACKAGE 1 LONG SECTION SHEET 107
JW14460-CRA-LS-S108:	PACKAGE 1 LONG SECTION SHEET 108
JW14460-CRA-LS-S109:	PACKAGE 1 LONG SECTION SHEET 109
JW14460-CRA-LS-S110:	PACKAGE 1 LONG SECTION SHEET 110
JW14460-CRA-LS-S111:	PACKAGE 1 LONG SECTION SHEET 111
JW14460-CRA-LS-S112:	PACKAGE 1 LONG SECTION SHEET 112
JW14460-CRA-LS-S113:	PACKAGE 1 LONG SECTION SHEET 113
JW14460-CRA-LS-S114:	PACKAGE 1 LONG SECTION SHEET 114
JW14460-CRA-LS-S115:	PACKAGE 1 LONG SECTION SHEET 115
JW14460-CRA-LS-S116:	PACKAGE 1 LONG SECTION SHEET 116
JW14460-CRA-LS-S117:	PACKAGE 1 LONG SECTION SHEET 117
JW14460-CRA-LS-S118:	PACKAGE 1 LONG SECTION SHEET 118
JW14460-CRA-LS-S119:	PACKAGE 1 LONG SECTION SHEET 119
JW14460-CRA-LS-S120:	PACKAGE 1 LONG SECTION SHEET 120
JW14460-CRA-LS-S121:	PACKAGE 1 LONG SECTION SHEET 121
JW14460-CRA-LS-S122:	PACKAGE 1 LONG SECTION SHEET 122
JW14460-CRA-LS-S123:	PACKAGE 1 LONG SECTION SHEET 123
JW14460-CRA-LS-S124:	PACKAGE 1 LONG SECTION SHEET 124
JW14460-CRA-LS-S125:	PACKAGE 1 LONG SECTION SHEET 125
JW14460-CRA-LS-S126:	PACKAGE 1 LONG SECTION SHEET 126
JW14460-CRA-LS-S127:	PACKAGE 1 LONG SECTION SHEET 127
JW14460-CRA-LS-S128:	PACKAGE 1 LONG SECTION SHEET 128
JW14460-CRA-LS-S129:	PACKAGE 1 LONG SECTION SHEET 129
JW14460-CRA-LS-S130:	PACKAGE 1 LONG SECTION SHEET 130
JW14460-CRA-LS-S131:	PACKAGE 1 LONG SECTION SHEET 131
JW14460-CRA-LS-S132:	PACKAGE 1 LONG SECTION SHEET 132
JW14460-CRA-LS-S133:	PACKAGE 1 LONG SECTION SHEET 133
JW14460-CRA-LS-S134:	PACKAGE 1 LONG SECTION SHEET 134
JW14460-CRA-LS-S135:	PACKAGE 1 LONG SECTION SHEET 135
JW14460-CRA-LS-S136:	PACKAGE 1 LONG SECTION SHEET 136
JW14460-CRA-LS-S137:	PACKAGE 1 LONG SECTION SHEET 137
JW14460-CRA-LS-S138:	PACKAGE 1 LONG SECTION SHEET 138
JW14460-CRA-LS-S139:	PACKAGE 1 LONG SECTION SHEET 139
JW14460-CRA-LS-S140:	PACKAGE 1 LONG SECTION SHEET 140
JW14460-CRA-LS-S141:	PACKAGE 1 LONG SECTION SHEET 141
JW14460-CRA-LS-S142:	PACKAGE 1 LONG SECTION SHEET 142
JW14460-CRA-LS-S143:	PACKAGE 1 LONG SECTION SHEET 143
JW14460-CRA-LS-S144:	PACKAGE 1 LONG SECTION SHEET 144
JW14460-CRA-LS-S145:	PACKAGE 1 LONG SECTION SHEET 145
JW14460-CRA-LS-S146:	PACKAGE 1 LONG SECTION SHEET 146
JW14460-CRA-LS-S147:	PACKAGE 1 LONG SECTION SHEET 147
JW14460-CRA-LS-S148:	PACKAGE 1 LONG SECTION SHEET 148
JW14460-CRA-LS-S149:	PACKAGE 1 LONG SECTION SHEET 149
JW14460-CRA-LS-S150:	PACKAGE 1 LONG SECTION SHEET 150
JW14460-CRA-LS-S151:	PACKAGE 1 LONG SECTION SHEET 151
JW14460-CRA-LS-S152:	PACKAGE 1 LONG SECTION SHEET 152
JW14460-CRA-LS-S153:	PACKAGE 1 LONG SECTION SHEET 153
JW14460-CRA-LS-S154:	PACKAGE 1 LONG SECTION SHEET 154
JW14460-CRA-LS-S155:	PACKAGE 1 LONG SECTION SHEET 155
JW14460-CRA-LS-S156:	PACKAGE 1 LONG SECTION SHEET 156
JW14460-CRA-LS-S157:	PACKAGE 1 LONG SECTION SHEET 157
JW14460-CRA-LS-S158:	PACKAGE 1 LONG SECTION SHEET 158
JW14460-CRA-LS-S159:	PACKAGE 1 LONG SECTION SHEET 159
JW14460-CRA-LS-S160:	PACKAGE 1 LONG SECTION SHEET 160
JW14460-CRA-LS-S161:	PACKAGE 1 LONG SECTION SHEET 161
JW14460-CRA-LS-S162:	PACKAGE 1 LONG SECTION SHEET 162
JW14460-CRA-LS-S163:	PACKAGE 1 LONG SECTION SHEET 163
JW14460-CRA-LS-S164:	PACKAGE 1 LONG SECTION SHEET 164
JW14460-CRA-LS-S165:	PACKAGE 1 LONG SECTION SHEET 165
JW14460-CRA-LS-S166:	PACKAGE 1 LONG SECTION SHEET 166
JW14460-CRA-LS-S167:	PACKAGE 1 LONG SECTION SHEET 167
JW14460-CRA-LS-S168:	PACKAGE 1 LONG SECTION SHEET 168
JW14460-CRA-LS-S169:	PACKAGE 1 LONG SECTION SHEET 169
JW14460-CRA-LS-S170:	PACKAGE 1 LONG SECTION SHEET 170
JW14460-CRA-LS-S171:	PACKAGE 1 LONG SECTION SHEET 171
JW14460-CRA-LS-S172:	PACKAGE 1 LONG SECTION SHEET 172
JW14460-CRA-LS-S173:	PACKAGE 1 LONG SECTION SHEET 173
JW14460-CRA-LS-S174:	PACKAGE 1 LONG SECTION SHEET 174
JW14460-CRA-LS-S175:	PACKAGE 1 LONG SECTION SHEET 175
JW14460-CRA-LS-S176:	PACKAGE 1 LONG SECTION SHEET 176
JW14460-CRA-LS-S177:	PACKAGE 1 LONG SECTION SHEET 177
JW14460-CRA-LS-S178:	PACKAGE 1 LONG SECTION SHEET 178
JW14460-CRA-LS-S179:	PACKAGE 1 LONG SECTION SHEET 179
JW14460-CRA-LS-S180:	PACKAGE 1 LONG SECTION SHEET 180
JW14460-CRA-LS-S181:	PACKAGE 1 LONG SECTION SHEET 181
JW14460-CRA-LS-S182:	PACKAGE 1 LONG SECTION SHEET 182
JW14460-CRA-LS-S183:	PACKAGE 1 LONG SECTION SHEET 183
JW14460-CRA-LS-S184:	PACKAGE 1 LONG SECTION SHEET 184
JW14460-CRA-LS-S185:	PACKAGE 1 LONG SECTION SHEET 185
JW14460-CRA-LS-S186:	PACKAGE 1 LONG SECTION SHEET 186
JW14460-CRA-LS-S187:	PACKAGE 1 LONG SECTION SHEET 187
JW14460-CRA-LS-S188:	PACKAGE 1 LONG SECTION SHEET 188
JW14460-CRA-LS-S189:	PACKAGE 1 LONG SECTION SHEET 189
JW14460-CRA-LS-S190:	PACKAGE 1 LONG SECTION SHEET 190
JW14460-CRA-LS-S191:	PACKAGE 1 LONG SECTION SHEET 191
JW14460-CRA-LS-S192:	PACKAGE 1 LONG SECTION SHEET 192
JW14460-CRA-LS-S193:	PACKAGE 1 LONG SECTION SHEET 193
JW14460-CRA-LS-S194:	PACKAGE 1 LONG SECTION SHEET 194
JW14460-CRA-LS-S195:	PACKAGE 1 LONG SECTION SHEET 195
JW14460-CRA-LS-S196:	PACKAGE 1 LONG SECTION SHEET 196
JW14460-CRA-LS-S197:	PACKAGE 1 LONG SECTION SHEET 197
JW14460-CRA-LS-S198:	PACKAGE 1 LONG SECTION SHEET 198
JW14460-CRA-LS-S199:	PACKAGE 1 LONG SECTION SHEET 199
JW14460-CRA-LS-S200:	PACKAGE 1 LONG SECTION SHEET 200
JW14460-CRA-LS-S201:	PACKAGE 1 LONG SECTION SHEET 201
JW14460-CRA-LS-S202:	PACKAGE 1 LONG SECTION SHEET 202
JW14460-CRA-LS-S203:	PACKAGE 1 LONG SECTION SHEET 203
JW14460-CRA-LS-S204:	PACKAGE 1 LONG SECTION SHEET 204
JW14460-CRA-LS-S205:	PACKAGE 1 LONG SECTION SHEET 205
JW14460-CRA-LS-S206:	PACKAGE 1 LONG SECTION SHEET 206
JW14460-CRA-LS-S207:	PACKAGE 1 LONG SECTION SHEET 207
JW14460-CRA-LS-S208:	PACKAGE 1 LONG SECTION SHEET 208
JW14460-CRA-LS-S209:	PACKAGE 1 LONG SECTION SHEET 209
JW14460-CRA-LS-S210:	PACKAGE 1 LONG SECTION SHEET 210
JW14460-CRA-LS-S211:	PACKAGE 1 LONG SECTION SHEET 211
JW14460-CRA-LS-S212:	PACKAGE 1 LONG SECTION SHEET 212
JW14460-CRA-LS-S213:	PACKAGE 1 LONG SECTION SHEET 213