

**CONTRACT JW 14358
CONSTRUCTION OF WOODMEAD INLET BULK WATER PIPELINE
TENDER BRIEFING - MINUTES**

<u>CONTRACT NUMBER:</u>	JW 14358
<u>CONTRACT TITLE:</u>	CONSTRUCTION OF WOODMEAD INLET BULK WATER PIPELINE
<u>DEPARTMENT:</u>	CAPEX
<u>DATE OF MEETING:</u>	15 AUGUST 2024
<u>TIME OF MEETING:</u>	11:00 AM
<u>VENUE FOR MEETING:</u>	MICROSOFT TEAMS
<u>CLOSING DATE:</u>	11 SEPTEMBER 2024
<u>CLOSING TIME:</u>	10:30AM

1. WELCOME

Ms. **Gcina Ndela** welcomed everyone who attended the meeting and introduced JW personnel.

NAME & SURNAME	EMAIL ADDRESS	DEPARTMENT
Gcina Ndela	Gcina.ndela@jwater.co.za	Supply Chain
Tshilidzi Takalani	Tshilidzi.takalani@jwater.co.za	Supply Chain
Sijabuliso Tshuma	Sijabuliso.tshuma@jwater.co.za	Capex
Tawanda Mashababe	Tawanda.mashababe@jwater.co.za	Capex
Madumetja Choeu	Madumetja.choeu@jwater.co.za	
Muano Mmbubana	Muano.mmabubana@jwater.co.za	

2. CONTACT PERSONS

Mr Sijabuliso Tshuma

Email: sijabuliso.tshuma@jwater.co.za

Telephone number: 011 688 1570

Ms. Gcina Ndela

Email: gcina.ndela@jwater.co.za

Telephone number: 011 688 1796

3. SUPPLY CHAIN MANAGEMENT PRESENTATION

- Ms. **Gcina Ndela** indicated that this is an open tender briefing meeting, and attendance is **COMPULSORY**. Bidders who did not attend the briefing meeting will **NOT** be considered for this tender. Therefore, bidders must make sure that they sign the attendance register on the link provided during briefing meeting session.

CONTRACT JW 14358
CONSTRUCTION OF WOODMEAD INLET BULK WATER PIPELINE
TENDER BRIEFING - MINUTES

- Tender documents are available in PDF format at no cost on Johannesburg Water website (www.johannesburgwater.co.za) and on eTenders.gov.za.
- Tender documents need to be bound and contain all pages. Tenderers therefore need to ensure that the tender document is submitted in its entirety with no pages or parts missing. The order of the documents must be as set out on the Web page and all pages arranged correctly.
- The tender document must be completed in full, and all the forms must be fully completed and signed accordingly. Tenderers must refer to the checklist on **page 9** of the tender document for guidance.
- The tender document must be filled in using black ink. Any mistakes must be struck-off and corrected with a single black ink line and signed (authenticated) by the tenderer.
- Tender documents may be completed electronically without altering or tampering of any of the text (terms, conditions, specifications etc.) in the tender documents.
- The use of correction fluid (Tippex) to correct mistakes is not allowed and if used the tender will be disqualified.
- Tenderers are required to hand submit one original hard copy and a soft copy on a USB flash drive, however tenderers who did not submit the USB will not be disqualified. Electronic submissions of tenders are not allowed.
- The required CIDB grading for the tender is 8CE or higher. Tenderers must ensure that their CIDB status is Active at time of evaluation at the required class and grade to avoid elimination. It is the responsibility of the tenderer to provide JW with the information that will enable JW to use to verify the tenderers status on the CIDB website. Information such as the CRS registration number or a copy of the certificate containing the registration number is appropriate. In cases of a Joint Venture, all parties must submit their CRS numbers or copies of their registration certificates.
- Tenderers must be registered on Central Supplier Database (CSD) and provide their registration MAAA**** number on the cover page of the tender document. Tenderers must ensure that they are always tax compliant on CSD.

**CONTRACT JW 14358
CONSTRUCTION OF WOODMEAD INLET BULK WATER PIPELINE
TENDER BRIEFING - MINUTES**

- The 90/10 points scoring system will be applicable to this tender. 90 points will be allocated to price and the remaining 10 points will be for specific goals.

4. SPECIFIC GOAL POINTS ALLOCATION

The Specific Goal Allocation will be scored as follows:

- 4 points for business located within the boundaries of COJ municipality.
- 3 points for businesses owned by 51 % or more black people.
- 3 points for businesses owned by 51 % or more women.
- Tenderers tendering as JV must submit a JV construction sector BBBEE certificate.
- In bids where consortia / joint ventures / sub-contractors are involved; each party must submit a separate TCS certificate / pin / CSD number.
- Make sure that your pricing schedule is fully complete and signed. Tenders must not leave blank spaces on the pricing schedule. Form of offer must be completed and signed.
- Make sure that all requested information is submitted. It is the tenderers responsibility to make sure that all the requested documents are submitted and are bound together (i.e.no loose papers are allowed).
- Tenderers must make sure that they read and understand the requirements of the tender, contract data, special conditions, and general conditions of the tender.
- Tenderers were also advised to sign (authenticate) each alteration where there are any to avoid being disqualified.
- The tenders will be valid for 90 days after the closing date or any other duration agreed to by the tenderer and JW prior to tender validity expiring.
- Co-bidding is prohibited. (Tenderer being a member / owner / shareholder in more than one consortium / entity for the same project). Please read MBD 9 Certificate of Independence prior to signing the declaration.
- Tenderers are encouraged to note the closing date and time of the tender; late tenders will not be accepted. The closing date for this tender is **11 SEPTEMBER 2024 at 10:30.**

CONTRACT JW 14358
CONSTRUCTION OF WOODMEAD INLET BULK WATER PIPELINE
TENDER BRIEFING - MINUTES

All bids are to be deposited in the tender box allocated on the ground floor at **No.65 Ntemi Piliso Street Turbine Hall, Newtown.**

- No bids will be considered from persons in the service of the state.
- Each bid must be submitted in a separate, properly sealed envelope on which the Name and Address of the bidder, The Tender Number and Description must be clearly written on the envelope.
- Tender documents submitted via courier services will be accepted provided that the bidder instructs such courier company or its representative to deposit the tender document in the tender box provided. Under no circumstances should tender documents be handed to an employee of JW.
- Tender documents may not be submitted via the South African Post Office as only tender documents received in the Tender Box at the time of closing will be considered.
- Tenderers must continuously revisit the JW web page for any communication send to tenderers, as there might be a problem with the emails send to the tenderers.
- Tenders will be opened in public soon after the closing time but not later than 11:00 at the tender office located at Turbine Hall, 65 Ntemi Piliso Street, Newtown, 2001, ground floor. Tenderers names and total prices, where practical will be read out and recorded.

5. SUPPORTING DOCUMENTS

- SARS one-time TAX PIN
- Municipal statement of account for both Director and Company (not older than three (03) months or a valid lease agreement).
- 3 years (3 sets) financial statements.
- Joint Venture / Consortium Agreement signed by all parties.
- Valid BBBEE Certificate or copy thereof or a valid sworn affidavit.
- A completed and signed Invitation to Bid form MBD 1
- A completed and signed pricing schedule form MBD 3.1
- A completed and signed Declaration of Interest form MBD 4
- Complete and sign MBD 5 (Declaration for Procurement above R10m)
- A completed and signed Preference Points Claim Form MBD 6.1

**CONTRACT JW 14358
CONSTRUCTION OF WOODMEAD INLET BULK WATER PIPELINE
TENDER BRIEFING - MINUTES**

- A completed and signed Declaration of Bidder's Past Supply Chain Management Practices MBD 8
- A completed and signed Certificate of Independent Bid Determination (MBD 9)

6. SCOPE OF WORKS

- See Attached Presentation by Tumelo Fosa

7. EVALUATION CRITERIA

- See Attached Presentation by Sijabuliso Tshuma

8. ENVIRONMENTAL PRESENTED

- See Attached Presentation by Madumetja Choeu

9. OHS PRESENTED

- See Attached Presentation by Muano Mmbubana

10. TENDER DATES

Tender Closing: **10:30 on 11 September 2024**. No late submissions will be accepted under any circumstances. Tender documents must be submitted in sealed envelopes, clearly marked with the reference number **JW 14358** and they must be deposited in the tender box. Under no circumstances must the tender document be given to JW employee or security personnel.

11. QUESTIONS AND ANSWERS

- **Question 1:** Will the excel BOQ be made available?

Answer 1: Yes

- **Question 2:** Should bidders submit an incorporated/consolidated BBBEE certificate if bidding as a JV?

Answer 2: Yes

- **Question 3:** Can bidders use arch liver files to submit their bid as opposing to binding the document?

Answer 3: Yes.

**CONTRACT JW 14358
CONSTRUCTION OF WOODMEAD INLET BULK WATER PIPELINE
TENDER BRIEFING - MINUTES**

- **Question 4:** Considering the size of the document, should bidders submit all volumes as download on the website?

Answer 4: Yes

- **Question 5:** Which CIDB grading is required?

Answer 5: 8CE or higher

- **Question 6:** Has a designated temporary stockpile area, spoil areas, and laydown areas been identified by the client?

Answer 6: Yes, however that information cannot be shared as yet. However, as stated by JW Environmental Official, it is the responsibility of the successful bidder to identify a suitable stockpile area.

- **Question 7:** Follow-up from Q6- How are bidders supposed to price without that information?

Answer 7: A clarification will be issued. Presentation by JW Environmental Official has clarified the matter.

- **Question 8:** (Hot tapping) Is the pressure, temperature, and linings of the existing pipelines available?

Answer 8: Yes, it is indicated in the tender document.

- **Question 9:** How does JW intend the field repairs to be done on the lining for 600 mm diameter pipeline which is less than the confined space of an 800 mm diameter pipeline?

Answer 9: The aim is to construct the pipeline sectionally in order to be in line with the labour laws.

- **Question 10:** Are the servitude drawings available that indicate the servitude widths along the pipeline?

Answer 10: Yes, they are indicated on the layout drawings.

- **Question 11:** Will the video demonstration be made available to the attendees?

Answer 11: Yes

- **Question 12:** What is the purpose of obtaining a joint BBBEE certificate if a different scoring system is used?

Answer 12: purpose is for Businesses located within the boundaries of COJ municipality. (Referred to tender document on page TP.29)

JOINT VENTURE, CONSORTIUM OR EQUIVALENT:

CONTRACT JW 14358
CONSTRUCTION OF WOODMEAD INLET BULK WATER PIPELINE
TENDER BRIEFING - MINUTES

For Joint Venture Agreements, Consortiums or equivalent, the agreement must show percentages of ownership and work to be completed by each party. This agreement must form part of the tender submission.

To determine the Joint Venture, Consortium or equivalent score for specific goals, JW will look at the consolidated BBBEE certificate to determine the points for specific goals that will be awarded to the tenderer. If a consolidated BBBEE certificate is not submitted, the parties to the joint venture, consortium or equivalent must submit their individual BBBEE certificates issued by a SANAS accredited verification agency or the documents listed below on and the joint venture, consortium or equivalent agreement in order for JW to determine the proportional points for specific goals.

Documentation to be provided:

- JV, Consortium, or equivalent agreement
- Consolidated BBBEE certificate issued by an SANAS accredited verification agency. Certificate must be valid.

- **Question 13:** What is the jointing system for the pipe access, will it be flanging or welding?

Answer 13: Welding

- **Question 14:** How are contractors supposed to work inside the pipe considering all the smoke that will be there?

Answer 14: The contractor must make allowance for ventilation by applying at the department of labour. More information will be provided in due course.

- **Question 15:** Do bidders sign or initialize at the bottom of the page?

Answer 15: They must initialize.

- **QUESTION 16:** What is the expected award period from the closing date?

ANSWER 16: 4 to 6 months.

- **QUESTION 17:** What is the duration of this contract?

ANSWER 17: 19 Months

**CONTRACT JW 14358
CONSTRUCTION OF WOODMEAD INLET BULK WATER PIPELINE
TENDER BRIEFING - MINUTES**

- **QUESTION 18:** Will there be local content requirements on the steel?

ANSWER 18: Local content is not stipulated in the tender, however all procurement must comply with the department of Trade and Industry.

- **QUESTION 19:** Must the pipe jacking be R 25 million or must the project include pipe jacking?

ANSWER 19: The emphasis is on projects involving pipe jacking with a project value of R25 million.

- **QUESTION 20:** Does a safety manager qualify as a safety officer?

ANSWER 20: The minimum requirement is a safety officer.

- **QUESTION 21:** Will JW consider an extension to the closing date?

ANSWER 21: Bidders will be advised in due course if an extension is granted.

- **QUESTION 22:** Is there colour coding that bidders must respect, or can bidders print in black and white?

ANSWER 22: Black and white is ok.

12. CLOSURE

- Should bidders need any clarity, all queries are to be submitted 10 days before the closing date.
- Mr Sijabuliso Tshuma thanked all who attended the briefing session, and the meeting was adjourned.



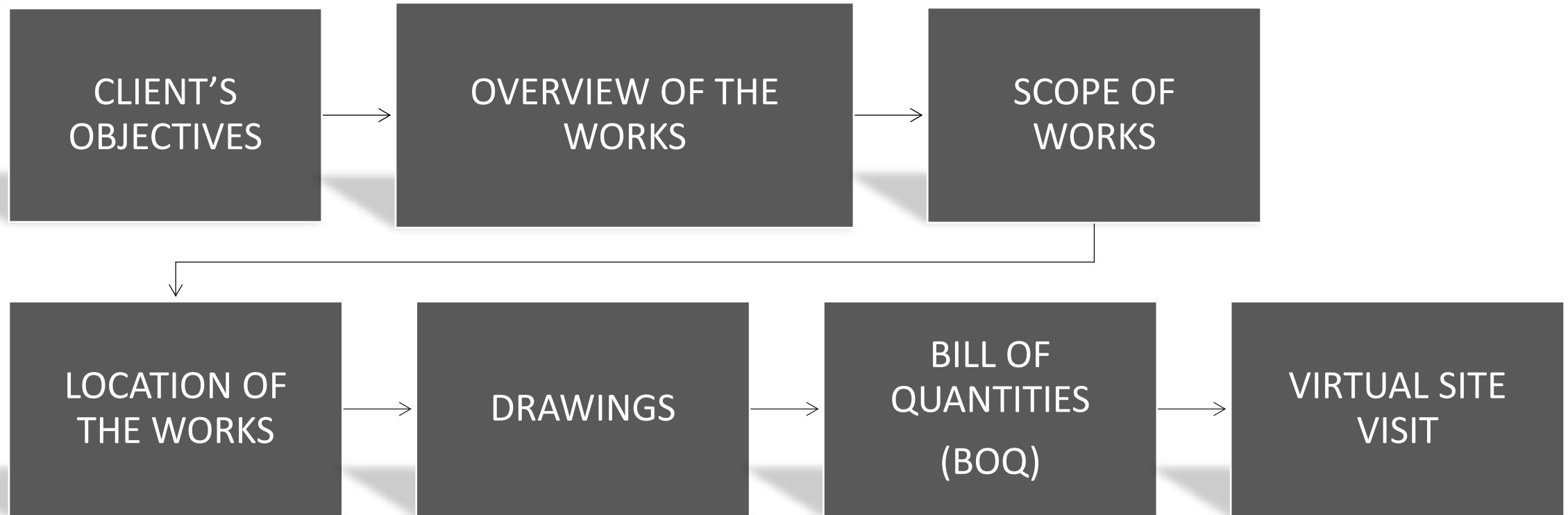
JW14358 CONSTRUCTION OF WOODMEAD INLET BULK WATER PIPELINE TENDER BRIEFING

NYELETI CONSULTING

TUMELO FOSA
15 August 2024



OVERVIEW





Project Background

- The Woodmead Water upgrade project forms part of Johannesburg Water 's (JW's) initiative to relieve the Malboro reservoir of the Waterfall City Sub-district's demand through the construction of the Woodmead reservoir and the bulk supply pipeline.

Purpose of Project:

- Assist in the creation of Waterfall City Sub-district
- Relieve Malboro reservoirs off the Waterfall City demand



CLIENT'S OBJECTIVES

- **Implement the following pipelines:**
- DN 600 steel main from Marlboro to the Woodmead reservoir, 4.8 km
- DN 600 steel bypass from Woodmead reservoir to existing DN 400 pipeline, 0.5 km
- DN 200 uPVC pipeline from the existing DN 400 pipeline to an existing PRV to split the Woodmead supply zone in two, 0.8 km
- DN 800 steel to augment the flow from the Marlboro reservoir, 0.1 km



CLIENT'S OBJECTIVES

- **Implement the pipeline in the following manor:**

The Contractor will therefore be required to programme his construction sequencing such that:

- A. There is a minimum of one dedicated team constructing each of these two pipeline sections DN 600 steel main from Marlboro to the Woodmead reservoir, 4.8 km
- B. The construction of these two pipeline sections is programmed to start as soon as possible after award of the contract
- C. NEC 4 Engineering and Construction Contract (ECC4) (2017)

OVERVIEW OF THE WORKS

- **The works consists of the following**
- Site clearing, pipe trenching, pipe bedding, trench backfilling, compacting and overall reinstatement of the existing roads and surfaces to its original state for all pipelines constructed.
- The construction of:
 - 4.9 km DN 600 welded steel pipeline inclusive of bends, pipe specials and cathodic protection.
 - 0.5 km DN 600 welded steel pipeline inclusive of bends, pipe specials and cathodic protection.
 - 0.1 km DN 800 welded steel pipeline inclusive of bends, pipe specials and cathodic protection.
 - 0.8 km DN 200 Hi-impact mPVC pipeline inclusive of bends, pipe specials and cathodic protection.
 - Concrete air valve chambers, pressure reducing valve chambers, isolating valve chambers, bulk meter chambers and scour valve chambers for the DN 600, the DN 800, and the DN 200 pipelines inclusive of access manholes, ventilation, and access ladders

SCOPE OF WORKS

4. PS 1.3

SCOPE OF THE WORK

Key items:

- Tie-in the DN 600 steel main to the existing DN 1500 steel pipeline at the take-off point in Marlboro Gardens by means of Hot-tapping.
- Tie-in the DN 600 steel main to the new DN 500 reservoir inlet pipeline at the reservoir site.
- Horizontal Directional Drilling for DN 250 & 200 HDPE scour pipelines, where required
- Install Cathodic Protection for all the steel pipelines (DN 600, DN 800).
- Traffic management and traffic accommodation
- Monthly Submission of EPWP statistics for the duration of the contract.



SCOPE OF WORKS

6. PS 1.5 TEMPORARY WORKS

Key items:

- Provide temporary drainage to the works and Temporary access and construction roads
- Provide temporary pedestrian and vehicle access bridges to maintain continuous access to the adjacent properties
- The Contractor shall note that no stockpiling of materials, plant, excavated material or any other construction related infrastructure shall be allowed in locations that may interfere with the operations of the Client and the public in general

LOCATION OF THE WORKS

- **LOCATION OF THE WORKS**
- Refer to the locality plan in Volume 3 of this tender document

Description	Y Coordinate	X Coordinate
Start of DN 800 steel pipeline	91 382.973	2 887 748.550
End of DN 800 steel pipeline	91 422.484	2 887 683.583
Start of DN 600 steel main	90 948.044	2 887 602.499
End of DN 600 steel main	91 437.845	2 886 855.350
Start of DN 600 bypass	91 139.467	2 883 348.471
End of DN 600 bypass	91 511.661	2 883 396.477
Start of DN 200 mPVC pipeline	91 518.267	2 883 397.870
End of DN 200 mPVC pipeline	91 479.085	2 882 865.884

DRAWINGS

Conduct Engineering activities ethically

Construction drawings

Upon receiving the instruction to commence with the works the Contractor shall receive 3 sets of construction drawings

Shop drawings

The Contractor shall be required to supply the Project Manager with 3 copies of detailed shop drawings prior to delivery of materials People not in the industry wanting

BILL OF QUANTITIES (BOQ)

Exercise sound judgement

10. PS 3.2 SUBCONTRACTING

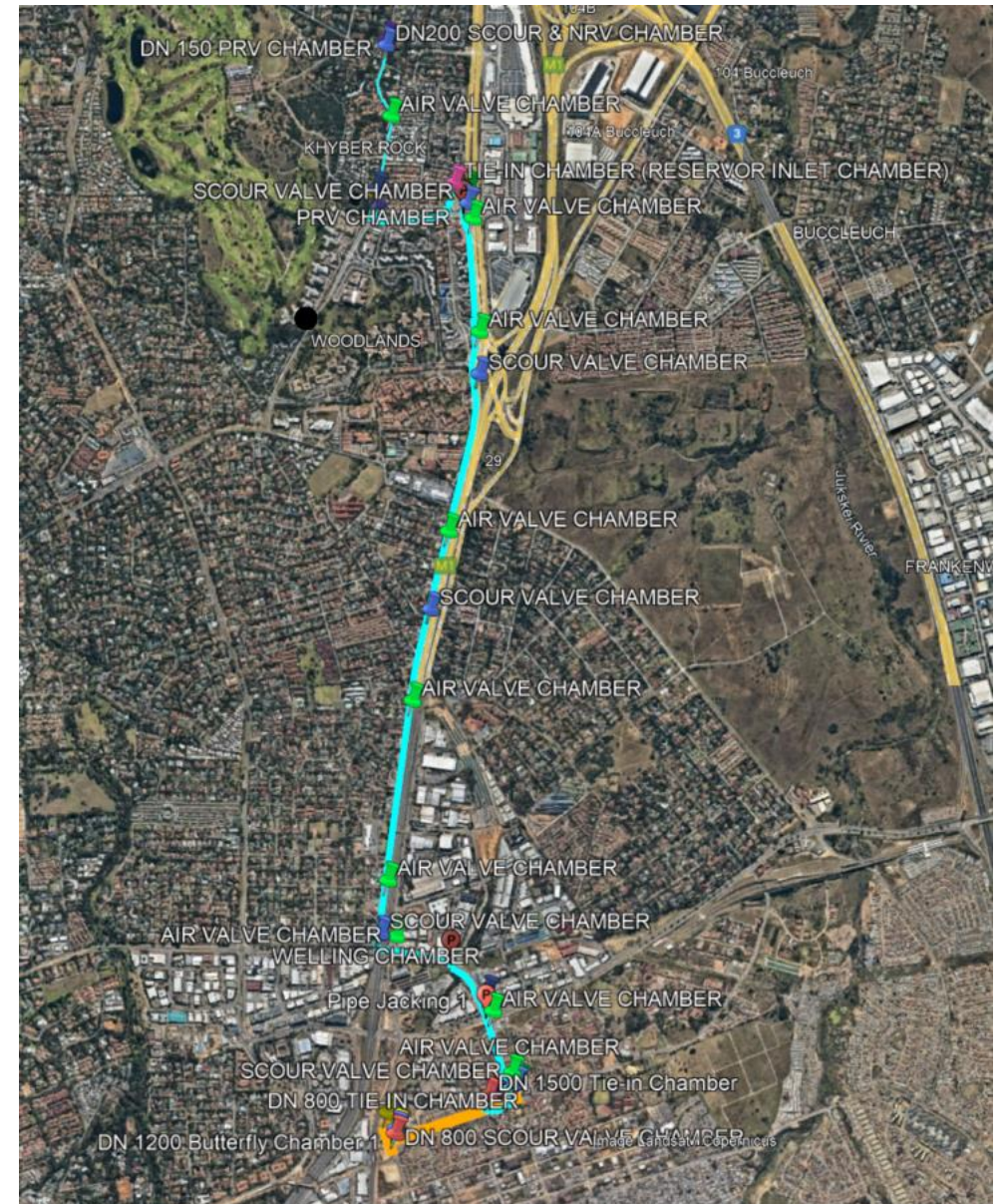
Potential subcontractor Scope may include but not limited to the following:

- Site clearance
- Pipe trenching and bedding preparations
- Laying of pipes (not bigger than 200 mm diameter)
- Brickwork and paving
- Construction of concrete for valve chambers
- Hand excavation
- Reinstatement of surfaces to original condition
- Supply of material and construction plant / equipment
- Fencing
- Training
- Security

VIRTUAL SITE VISIT

Be responsible for making decisions

Refer to KMZ File



THANK YOU !!!

QUESTIONS?

INPUTS?

Thank you – Any Questions???



EVALUATION CRITERIA

JW14358 WOODMEAD INLET BULK WATER PIPELINE

AUGUST 15, 2024
JOHANNESBURG WATER



Contract: JW14358
CONSTRUCTION OF WOODMEAD INLET BULK PIPELINE
Volume 1 Tender and Contract
Section T1 Tendering Procedures



Clause number	Tender Data		
C.1.1	<u>Mandatory Requirements</u>		
	NO.	DEFINITELY NON -NEGOTIABLE CRITERIA	YES
	Criteria 1	CIDB grading 8CE or higher or Proof of registration with CIDB – (state in the tender document that Active Registration status will be required at evaluation).	Active Status at the required CIDB grading or higher at the time of Evaluation
	Criteria 2	Mandatory Tender Briefing Meeting	Yes
	Criteria 3	Form of Offer Completed and Signed	Yes
	Tenderers who FAIL to meet the mandatory criteria or requirements of tender will result in disqualification.		

Employer:		Contractor:	
Witness:		Witness:	



Contract: JW14358
CONSTRUCTION OF WOODMEAD INLET BULK PIPELINE
 Volume 1 Tender and Contract
 Section T1 Tendering Procedures



Clause number	Tender Data				
	<u>Administrative Requirements</u>				
	Description			Complied	
	Reference	Description	Requirement	Yes	No
	Certificate Authority of	Certificate of Authority or Board Resolution granting authority to sign.	Completed and signed certificate of authority to sign or signed board resolution		
	MBD 1	Invitation to Bid Form	Complete and submit complete and signed MBD 1 Form.		
	CSD	Central Supplier Database Registration	Provide proof of CSD registration.		
	MBD 4	Declaration of Interest	Complete and submit complete and signed MBD 4 Form.		
	MBD 5	Declaration of Procurement Above R10m (All Applicable Taxes Included)	Complete and submit signed MBD 5 Form.		
	T2.3.2	Acknowledgement of Project Tender Drawings	Complete and submit signed T2.3.2 Form.		
	T2.3.1	Acknowledgement of SHE Specification & Annexures	Complete and submit signed T2.3.1 Form.		
	MBD 6.1	Preference Points Claim in Terms of The Preferential Procurement Regulations 2022	Complete and submit complete and signed MBD 6.1 Form.		

Employer:		Contractor:	
Witness:		Witness:	



Contract: JW14358
CONSTRUCTION OF WOODMEAD INLET BULK PIPELINE
Volume 1 Tender and Contract
Section T1 Tendering Procedures



Clause number	Tender Data				
	MBD 8	Declaration of Bidder's Past Supply Chain Management Practices	Complete and submit complete and signed MBD 8 Form.		
	MBD 9.	Certificate of Independent Bid Determination	Complete and submit complete and signed MBD 9 Form.		
	Annexure – Proof of Specific Goals - Ref: 4.4	Valid BBBEE Certificate or certified copy thereof or a valid sworn affidavit	Submit applicable documentation with the tender submission		
	Annexure T2.2.4	Municipal statement of account for Director/s (not older than three (03) months from the closing date of tender or a valid lease agreement at time of tender closure).	Submit applicable documentation with the tender submission		
	Annexure T2.2.4	Municipal statement of account for Company (not older than three (03) months from the closing date of tender or a valid lease agreement at time of tender closure).	Submit applicable documentation with the tender submission		

Employer:		Contractor:	
Witness:		Witness:	



Contract: JW14358
CONSTRUCTION OF WOODMEAD INLET BULK PIPELINE
 Volume 1 Tender and Contract
 Section T1 Tendering Procedures



Clause number	Tender Data						
	Functionality Requirements						
	CRITERIA NO #	CRITERIA	EVIDENCE	SUB-CRITERIA/CLAUSE		MAX SCORE	SCORE
	1.	<p>Tenderer's (Company) experience in field welded steel pipelines projects</p> <p>Tenderer has completed field welded steel pipeline projects with a minimum diameter of 600 mm inclusive of cathodic protection, with valve chambers, and a minimum value of R25 million per project.</p>	<p>Tenderer to provide reference letters and completion certificates as per the format provided in section T2.1.7, on the Client's letterhead, with all the required information.</p> <p>Note: The attached contactable reference letter must be completed by the referee/previous client of the tenderer and included in the tender submission. Alternatively, the Clients letterhead may be used provided it complies with the functionality requirements. A separate form must be completed for each reference as a requirement in the evaluation criteria. The information provided will be verified and if found to be false or misrepresented, punitive measures will be instituted against the respective party including blacklisting in participating in any future government tenders.</p>	NUMBER OF PROJECTS INVOLVING FIELD WELDED STEEL PIPELINE OF DIAMETER ≥ 600mm INCLUSIVE OF CATHODIC PROTECTION, VALVE CHAMBERS AND OF MINIMUM VALUE R25 MILLION PER PROJECT	0 Completed Projects	20	0
					1 - 2 Completed Projects		10
					3 - 4 completed projects		14
					More than 4 completed projects		20

Employer:		Contractor:	
Witness:		Witness:	



Contract: JW14358
CONSTRUCTION OF WOODMEAD INLET BULK PIPELINE
 Volume 1 Tender and Contract
 Section T1 Tendering Procedures



Clause number	Tender Data																						
	<table><thead><tr><th>CRITERIA NO #</th><th>CRITERIA</th><th>EVIDENCE</th><th colspan="2">SUB-CRITERIA/CLAUSE</th><th>MAX SCORE</th><th>SCORE</th></tr></thead><tbody><tr><td rowspan="3">2.</td><td>Tenderer's (Company) experience in pipe jacking of field welded steel pipelines.</td><td>Tenderer to provide reference letters and completion certificates as per the format provided in section T2.1.7, on the Client's letterhead, with all the required information. The letter to include the evidence described in the preceding paragraph.</td><td rowspan="3">NUMBER OF PROJECTS INVOLVING PIPE JACKING FOR A FIELD WELDED STEEL PIPELINE OF DIAMETER ≥ 600 mm AND OF MINIMUM PROJECT VALUE R25 MILLION</td><td>0 completed projects</td><td rowspan="3">10</td><td>0</td></tr><tr><td>Tenderer has completed pipe jacking of a field welded steel pipeline project/s with a minimum diameter of 600 mm and of minimum project value of R25 million.</td><td>Note: The Tenderer contactable reference letter must be completed by the referee/previous client of the tenderer and included in the tender submission. Alternatively, the Clients letterhead may be used provided it complies with the functionality requirements. A separate form must be completed for each reference as a requirement in the evaluation criteria. The information provided will be verified and if found to be false or misrepresented, punitive measures will be instituted against the respective party including blacklisting in participating in any future government tenders.</td><td>1 - 2 Completed Projects</td><td>7</td></tr><tr><td></td><td></td><td>More than 2 completed projects</td><td>10</td></tr></tbody></table>	CRITERIA NO #	CRITERIA	EVIDENCE	SUB-CRITERIA/CLAUSE		MAX SCORE	SCORE	2.	Tenderer's (Company) experience in pipe jacking of field welded steel pipelines.	Tenderer to provide reference letters and completion certificates as per the format provided in section T2.1.7, on the Client's letterhead, with all the required information. The letter to include the evidence described in the preceding paragraph.	NUMBER OF PROJECTS INVOLVING PIPE JACKING FOR A FIELD WELDED STEEL PIPELINE OF DIAMETER ≥ 600 mm AND OF MINIMUM PROJECT VALUE R25 MILLION	0 completed projects	10	0	Tenderer has completed pipe jacking of a field welded steel pipeline project/s with a minimum diameter of 600 mm and of minimum project value of R25 million.	Note: The Tenderer contactable reference letter must be completed by the referee/previous client of the tenderer and included in the tender submission. Alternatively, the Clients letterhead may be used provided it complies with the functionality requirements. A separate form must be completed for each reference as a requirement in the evaluation criteria. The information provided will be verified and if found to be false or misrepresented, punitive measures will be instituted against the respective party including blacklisting in participating in any future government tenders.	1 - 2 Completed Projects	7			More than 2 completed projects	10
CRITERIA NO #	CRITERIA	EVIDENCE	SUB-CRITERIA/CLAUSE		MAX SCORE	SCORE																	
2.	Tenderer's (Company) experience in pipe jacking of field welded steel pipelines.	Tenderer to provide reference letters and completion certificates as per the format provided in section T2.1.7, on the Client's letterhead, with all the required information. The letter to include the evidence described in the preceding paragraph.	NUMBER OF PROJECTS INVOLVING PIPE JACKING FOR A FIELD WELDED STEEL PIPELINE OF DIAMETER ≥ 600 mm AND OF MINIMUM PROJECT VALUE R25 MILLION	0 completed projects	10	0																	
	Tenderer has completed pipe jacking of a field welded steel pipeline project/s with a minimum diameter of 600 mm and of minimum project value of R25 million.	Note: The Tenderer contactable reference letter must be completed by the referee/previous client of the tenderer and included in the tender submission. Alternatively, the Clients letterhead may be used provided it complies with the functionality requirements. A separate form must be completed for each reference as a requirement in the evaluation criteria. The information provided will be verified and if found to be false or misrepresented, punitive measures will be instituted against the respective party including blacklisting in participating in any future government tenders.		1 - 2 Completed Projects		7																	
				More than 2 completed projects		10																	

Employer:		Contractor:	
-----------	--	-------------	--



Contract: JW14358
CONSTRUCTION OF WOODMEAD INLET BULK PIPELINE
Volume 1 Tender and Contract
Section T1 Tendering Procedures



Witness:		Witness:	
----------	--	----------	--



Contract: JW14358
CONSTRUCTION OF WOODMEAD INLET BULK PIPELINE
 Volume 1 Tender and Contract
 Section T1 Tendering Procedures



Clause number	Tender Data						
	CRITERIA NO #	CRITERIA	EVIDENCE	SUB-CRITERIA/CLAUSE		MAX SCORE	SCORE
	3.	<p>Contract Manager's experience</p> <p>Contract Manager's experience as a Contract Manager involving field welded steel pipeline of diameter greater or equal to 600mm and of minimum value R25 million per project</p> <p>Only Contracts Managers with minimum qualifications of Bachelors Degree (B-Tech/ B Eng/ BSc Civil Eng/ Quantity Surveying/ Construction Management) and</p> <p>Professional Registration, (Pr. Eng. / Pr Tech Eng./ Pr QS / PrCPM / PrCM)) will be considered for evaluation.</p>	<p>Tenderer to provide CV of Contract Manager in the format provided on T.2.1.9</p> <p>Note: Tenderers are required to make use of CV template provided on T2.1.9 however, Tenderers may provide their own CVs but information provided should contain information required for functionality.</p> <p>Note: Certified Copies of qualifications and valid registrations are to accompany the CVs.</p>	<p>NUMBER OF PROJECTS INVOLVING FIELD WELDED STEEL PIPELINE OF DIAMETER GREATER OR EQUAL TO 600mm COMPLETED IN</p> <p>THE CAPACITY OF CONTRACT MANAGER AND OF MINIMUM VALUE R25 MILLION PER PROJECT</p>	<p>0 completed projects</p> <p>1 - 2 completed projects</p> <p>More than 2 completed projects</p>	<p>20</p>	<p>0</p> <p>14</p> <p>20</p>

Employer:		Contractor:	
Witness:		Witness:	



Contract: JW14358
CONSTRUCTION OF WOODMEAD INLET BULK PIPELINE
 Volume 1 Tender and Contract
 Section T1 Tendering Procedures



Clause number	Tender Data						
	CRITERIA NO #	CRITERIA	EVIDENCE	SUB-CRITERIA/CLAUSE		MAX SCORE	SCORE
	4.	Site Manager/Agent experience Site Manager/Agent’s experience as a Site Manager/Agent involving field welded steel pipeline projects of diameter greater or equal to 600 mm inclusive of cathodic protection, with valve chambers, and a minimum value of R25 million per project. Only Site Managers/Agents with minimum qualifications of BTech in Civil Engineering will be considered for evaluation. AND Registered as a Candidate Engineering Technologist/Candidate Construction Project Manager/Candidate Construction Manager or Higher	Tenderer to provide CV of Site Agent in the format provided on T.2.1.9 Note: Tenderers are required to make use of CV template provided on T2.1.9 however, Tenderers may provide their own CVs but information provided should contain information required for functionality. Note: Certified Copies of qualifications and valid registrations are to accompany the CVs.	NUMBER OF PROJECTS INVOLVING FIELD WELDED STEEL PIPELINE OF DIAMETER GREATER OR EQUAL TO 600mm INCLUSIVE OF CATHODIC PROTECTION COMPLETED IN THE CAPACITY OF SITE MANAGER/AGENT AND OF MINIMUM VALUE R25 MILLION PER PROJECT	0 completed projects	20	0
					1 completed projects		10
					2 - 3 completed projects		14
					More than 3 completed projects		20

Employer:		Contractor:	
Witness:		Witness:	



Contract: JW14358
CONSTRUCTION OF WOODMEAD INLET BULK PIPELINE
 Volume 1 Tender and Contract
 Section T1 Tendering Procedures



Clause number	Tender Data						
	CRITERIA NO #	CRITERIA	EVIDENCE	SUB-CRITERIA/CLAUSE		MAX SCORE	SCORE
5.		Safety Officer's experience	Tenderer to provide CV of Safety Officer in the format provided on T.2.1.9 Note: Tenderers are required to make use of CV template provided on T2.1.9 however, Tenderers may provide their own CVs but information provided should contain information required for functionality. Note: Certified Copies of qualifications and valid registrations are to accompany the CVs	NUMBER OF CIVIL/STRUCTURAL ENGINEERING PROJECTS COMPLETED AS SAFETY OFFICER WITH A MINIMUM VALUE OF R25 MILLION PER PROJECT IN THE CAPACITY OF SAFETY OFFICER	0 completed projects	10	0
		1-2 completed projects			5		
		3-4 completed projects			7		
		More than 4 completed projects			10		
		SAMTRAC/ SHEOMTRAC/ SHEMTRAC/ MESHTRAC / NEBOSH / Safety Officers Course and other courses at NQF Level 5 AND Registration with SACPCMP will be considered for evaluation.					

Employer:		Contractor:	
Witness:		Witness:	



Contract: JW14358
CONSTRUCTION OF WOODMEAD INLET BULK PIPELINE
 Volume 1 Tender and Contract
 Section T1 Tendering Procedures



Clause number	Tender Data						
	CRITERIA NO #	CRITERIA	EVIDENCE	SUB-CRITERIA/CLAUSE		MAX SCORE	SCORE
	6.	Tenderer to provide evidence of Company's approved Quality Control Plan Standard Procedures	Tenderer to provide their company's Quality Control Plan Standard Procedures approved by the company's relevant designated person OR ISO 9001 certification	COMPANY'S APPROVED (BY INTERNAL RESPONSIBLE PERSON) QUALITY CONTROL PLAN STANDARD PROCEDURES	No submission of approved (by Internal responsible person) Quality Control Plan Standard Procedures or ISO 9001 certification	10	0
				OR	Company has approved (by Internal responsible person) Quality Control Plan Standard Procedures		7
				ISO CERTIFICATION 9001	Company has ISO 9001 certification		10

Employer:		Contractor:	
-----------	--	-------------	--



Contract: JW14358
CONSTRUCTION OF WOODMEAD INLET BULK PIPELINE
Volume 1 Tender and Contract
Section T1 Tendering Procedures



Witness:		Witness:	
----------	--	----------	--



Contract: JW14358
CONSTRUCTION OF WOODMEAD INLET BULK PIPELINE
 Volume 1 Tender and Contract
 Section T1 Tendering Procedures



Clause number	Tender Data						
	CRITERIA NO #	CRITERIA	EVIDENCE	SUB-CRITERIA/CLAUSE		MAX SCORE	SCORE
	7.	With respect to Criteria 2 Tenderer's to provide evidence of approved Method Statement of pipe jacking for a field welded steel pipeline of diameter greater or equal to 600 mm	Tenderer to provide approved Method Statement of pipe jacking for a field welded steel pipeline of diameter greater or equal to 600 mm signed off by the respective Engineer OR Employer's Representative	APPROVED METHOD STATEMENT OF PIPE JACKING FOR A FIELD WELDED STEEL PIPELINE OF DIAMETER GREATER OR EQUAL TO 600 MM SIGNED OFF BY THE RESPECTIVE ENGINEER OR EMPLOYER'S REPRESENTATIVE	No approved Method Statement submitted	10	0
					Only 1 Approved/Signed off (by Engineer) Method Statement submitted		7
					More than 1 Approved/Signed off (by Engineer) Method Statement submitted		10
					MINIMUM QUALIFYING SCORE	70%	
					TOTAL	100%	

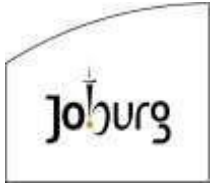
Employer:		Contractor:	
-----------	--	-------------	--



Contract: JW14358
CONSTRUCTION OF WOODMEAD INLET BULK PIPELINE
Volume 1 Tender and Contract
Section T1 Tendering Procedures



Witness:		Witness:	
----------	--	----------	--



Contract: JW14358
CONSTRUCTION OF WOODMEAD INLET BULK PIPELINE
Volume 1 Tender and Contract
Section T1 Tendering Procedures



Clause number	Tender Data
	<p>NOTE 1: Foreign qualifications MUST be accompanied by a SAQA verification certificate. Failure to submit SAQA verification certificate will lead to that qualification not being considered for allocation of points for that criterion.</p> <p>NOTE 2: For Professional registrations, JW will verify the validity of the registration on the issuing bodies or institution's website. If the verification is confirmed, the bidder meets the criteria. This will only be applicable for the recommended bidder.</p> <p>NOTE 3: The time of registration of Contract Manager, Site Manager and Safety Officer will not impact post qualification number of projects.</p> <p>NOTE 4: The information provided by bidders will be verified and if found to be false, punitive measures will be affected.</p> <p>ECSA: Engineering Council of South Africa SACPCMP: South African Council for the Project and Construction Management Professions SAMTRAC: Safety Management Training Course NEBOSH: National Examination Board in Occupational Safety and Health SHEOMTRAC: Safety Health Environmental Occupational Management Training Course SHEMTRAC: Safety Health Environmental Management Training Course MESHTRAC: Management Environmental Safety Health Training Course</p>

Employer:		Contractor:	
Witness:		Witness:	



City of Johannesburg
Johannesburg Water SOC Ltd
17 Harrison Street Johannesburg Water Tel +27(0) 11 688 1400
Johannesburg PO Box 61542 Fax +27(0) 11 688 1528
Mar2107shalltown

www.joburg.org.za johannesburgwater.co.za

Environmental Requirements (Tender briefing)

Environmental Management Requirements

Compliance with the following :

Contractor is required to comply with JW Environmental Management Plan, any relevant applicable legislation and any Environmental Authorizations where required.

Environmental File:

The Contractor is required to submit the Environmental file:

Environmental File requirements

- Environmental file requirements will be presented in the induction.
- Environmental file is required to obtain **80%** to be approved.
- An approval letter / rejection letter will be submitted to the Contractor once evaluation is completed.

Site Camp:

The Contractor is encouraged to source privately land owned as site camp. JW Environmental Section must assess and approve the proposed site camp location.

KEY Personnel:

Minimum Requirements for the appointment of the SHE Officer (for unauthorized projects):

National Diploma in Safety &
ISO14001:2015 (Introduction/Awareness,
implementation, and auditing
ISO14001:2015) + 2 years' Experience

OR

National Diploma in Environmental
Management + 2 years' Experience OR
NEBOSH / SAMTRAC & Basic
ISO14001:2015/ Basic Environmental
Awareness (Introduction and
Implementations to ISO14001:2015) + 4
years' Experience.
Register with SACPCMP



City of Johannesburg
Johannesburg Water SOC Ltd

17 Harrison Street

Johannesburg Water
Johannesburg PO Box 61542

Tel +27(0) 11 688 1400
Fax +27(0) 11 688 1528

Mar2107shalltown

www.joburg.org.za johannesburgwater.co.za

Minimum Requirements for the appointment of the EO/ ELO (for authorized projects):

National Diploma in Environmental Management/ + 3 years' Experience.

BA/BSc Environmental Management + 3 years' experience.

The recommended and/or market related minimum Salary/wages for ELO/EO should be **R17 000.00**.

Minimum Requirements for the appointment of Environmental Representative/Rep:

Must hold a Senior Certificate (Matric) and one of the following qualifications. National Diploma in Environmental Management/ BA/BSc Environmental Management or Science/ISO 14001:2015(Introduction. Implementation and Auditing/Certificate in Environmental law/National Certificate in Environmental Management

The recommended and/or market related minimum salary/wages for Environmental Reps should be **R10 000.00**.

Minimum Requirements for the appointment of Landscaping Specialist (Rehabilitation Purposes for both Authorized and Unauthorized Projects) :

Reputable Environmental Consulting
/Landscaping Company.

Landscaping Specialist should at least have BA/BSc Honours Degree or 4-year Degree in Natural Sciences/Ecological.

- The Landscaping Specialist must at least be registered with South African Council for Natural Scientific Professions (SACNASP) as a Professional Natural Scientist (Copy of SACNASP Certificate must be submitted).

Specialist should at least have a minimum of five (5) years working experience as landscaping Specialist

Performance and Monitoring of the Project

- JW Environmental Section will conduct Monthly Audit
- The Contractor is required to obtain minimum score of **93%** to pass the audit.
- Site Inspection will be conducted as and when required.
- Attend Monthly Progress Meeting

Completion Phase

- Conduct Inspection to verify if rehabilitation /re-instatement is completed
- Final Audit Report.
- Attend Practical Completion
- Contractor to handover the Environmental File.

OHS TENDER BRIEFING PRESENTATION

RETURNABLE DOCUMENTS:

1. Volume 2 Spec

- The Spec should not be dismantled, and should be returned as is.
- Annexes in the Spec include:

No	Document attached	Remarks
1	SHE specification	Complete front page & sign last page
2	Medical Screening Policy	For information
3	Medical Screening Acknowledgement form	Sign and complete
4	Baseline risk assessment	For information
5	Competence evaluation	Complete and sign
6	Sign off form	For information

- Ensure that all safety related costs have been catered for in the BOQ – refer to the specification and medical screening policy for requirements.

2. Letter of Good Standing

- The tenderer should ensure that they are in Good Standing with the Compensation Commissioner - Letter of Good Standing (valid) FEM / COID – **Vol 1**

Directors:

Ms Dineo Majavu (Chairperson), Mr Ntshavheni Mukwevho (Managing Director and Executive Director),
Mr Kgaugelo Mahlaba (Chief Financial Officer and Executive Director), Mr Sipho Mthembu, Ms Zandile Meeleso, Mr Pholoso Matjele,
Mr Kgaile Mogoye, Mr Molate Mashifane, Ms Pamela Mabece, Mr Collen Sambo, Mr Makoko Makgonye, Ms Thabiso Kutumela,
Mr Kefiloe Mokoena

Ms Kethabile Mabe (Company Secretary),
Johannesburg Water SOC Ltd
Registration Number: 2000/029271/30

3. Construction Safety Officer (CSO) 's CV

- Submit Safety officer's CV and qualifications
- Requirement: min 4 years related experience with Safety programmes / short courses: e.g., SAMTRAC OR National Diploma in Safety Management or any related field
- Proof of full Registration with the SACPCMP as a CHSO
- Contractor to verify Documents before submissions to avoid submitting fraudulent documents

Qualification	Experience	CHS Programmes
Short courses (NQF level 3-5)	4 years	<ul style="list-style-type: none"> • Hazard Identification and Risk Management • Accident or Incident Investigation Management • Legislation and Regulations • Health, Hygiene and Environmental Management • Emergency Preparedness Management
Learnership Certificate	3 years	
ND Safety Management	2 years	
B.tech Safety Mngmt	1 year	
B.Com Operational Risk	1 year	
N.Dip (Bldg, CM, QS, Archt, Civil, Electr, Mech)+ CHS Prog	3 years	
B.Tech (above)	2 years	
N.Dip Enviro or related + CHS Prog	3 years	
BSc Enviro or related + CHS Prog	2 years	

4. Construction Manager

- Full time on site
- Construction Manager (Site Agent) - be registered with SACPCMP (Professional Construction Manager / Candidate Construction Manager)

Directors:

Ms Dineo Majavu (Chairperson), Mr Ntshavheni Mukwevho (Managing Director and Executive Director),
Mr Kgaugelo Mahlaba (Chief Financial Officer and Executive Director), Mr Sipho Mthembu, Ms Zandile Meeleso, Mr Pholoso Matjele,
Mr Kgaile Mogoye, Mr Molate Mashifane, Ms Pamela Mabece, Mr Collen Sambo, Mr Makoko Makgonye, Ms Thabiso Kutumela,
Mr Kefiloe Mokoena

Ms Kethabile Mabe (Company Secretary),
Johannesburg Water SOC Ltd
Registration Number: 2000/029271/30

- Project & Construction Management Professions Act, 48 of 2000 (**for more info**)

5. Construction Work Permit

- Construction work permit will be applied by the client

6. Site Monitoring

- Audits and inspections will be conducted by the client and a minimum of 93% is expected from the contractor if a minimum score of 93% is not reached for 3 consecutive months it will lead to disciplinary hearing- ensure compliance at all times

7. Safety Induction

- Induction will be conducted with the appointed Contractor to share more information on safety and safety file requirements
- The contractor will then be expected to submit the safety file within specified time frames for approval
- No work will commence before approval of the safety file

Directors:

Ms Dineo Majavu (Chairperson), Mr Ntshavheni Mukwevho (Managing Director and Executive Director),
Mr Kgaugelo Mahlaba (Chief Financial Officer and Executive Director), Mr Sipho Mthembu, Ms Zandile Meeleso, Mr Pholoso Matjele,
Mr Kgaile Mogoye, Mr Molate Mashifane, Ms Pamela Mabece, Mr Collen Sambo, Mr Makoko Makgonye, Ms Thabiso Kutumela,
Mr Kefiloe Mokoena

Ms Kethabile Mabe (Company Secretary),
Johannesburg Water SOC Ltd
Registration Number: 2000/029271/30



a world class African city



City of Johannesburg

Johannesburg Water SOC Ltd

Turbine Hall
65 Ntengi Piliso Street
Newtown
Johannesburg

Johannesburg Water
PO Box 61542
Marshalltown
2107

Tel +27(0) 11 688 1400
Fax +27(0) 11 688 1528

www.johannesburgwater.co.za

Directors:

Ms Dineo Majavu (Chairperson), Mr Ntshavheni Mukwevho (Managing Director and Executive Director),
Mr Kgaugelo Mahlaba (Chief Financial Officer and Executive Director), Mr Sipho Mthembu, Ms Zandile Meeleso, Mr Pholoso Matjele,
Mr Kgaile Mogoye, Mr Molate Mashifane, Ms Pamela Mabece, Mr Collen Sambo, Mr Makoko Makgonye, Ms Thabiso Kutumela,
Mr Kefiloe Mokoena

Ms Kethabile Mabe (Company Secretary),

Johannesburg Water SOC Ltd

Registration Number: 2000/029271/30