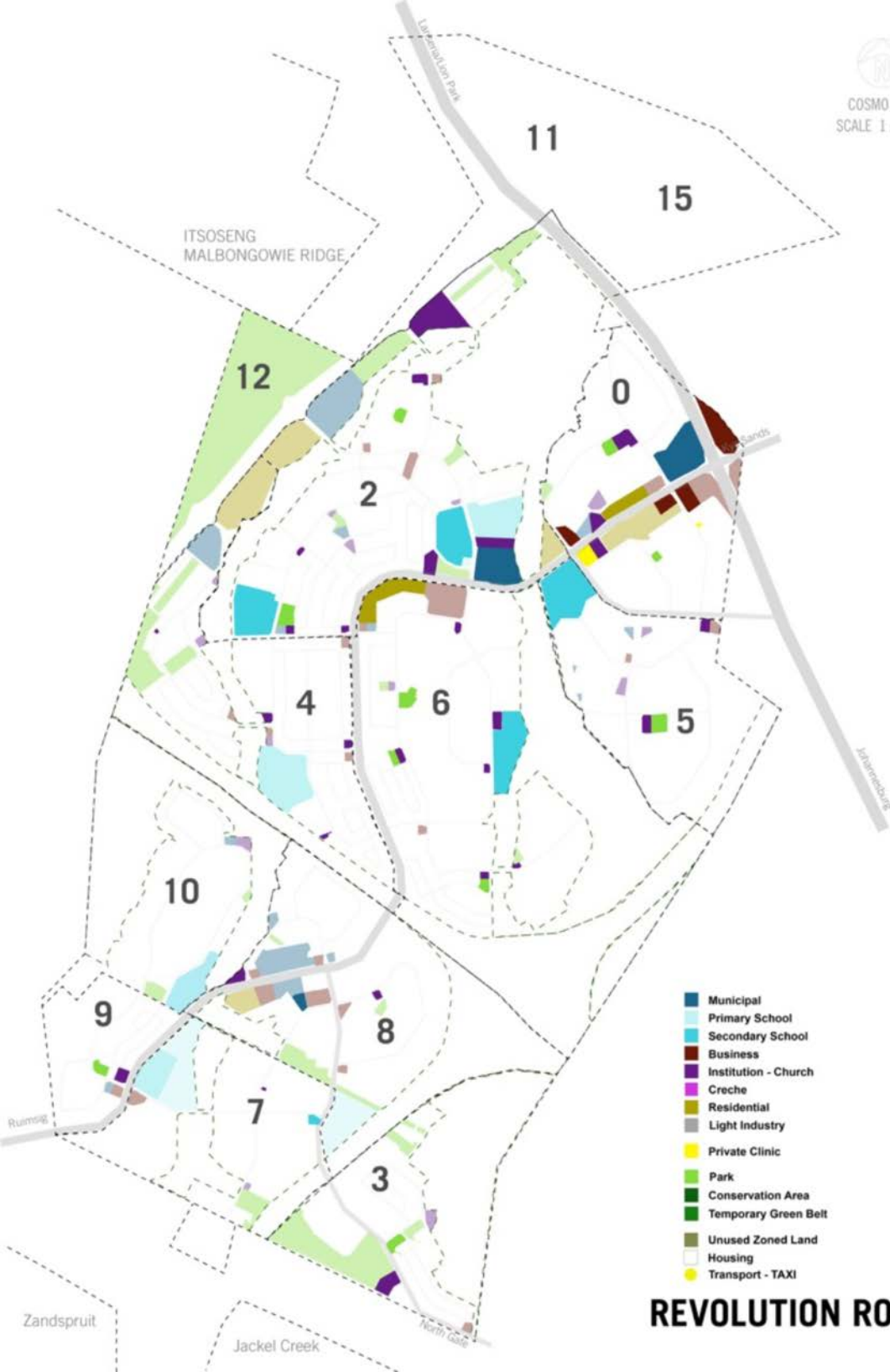
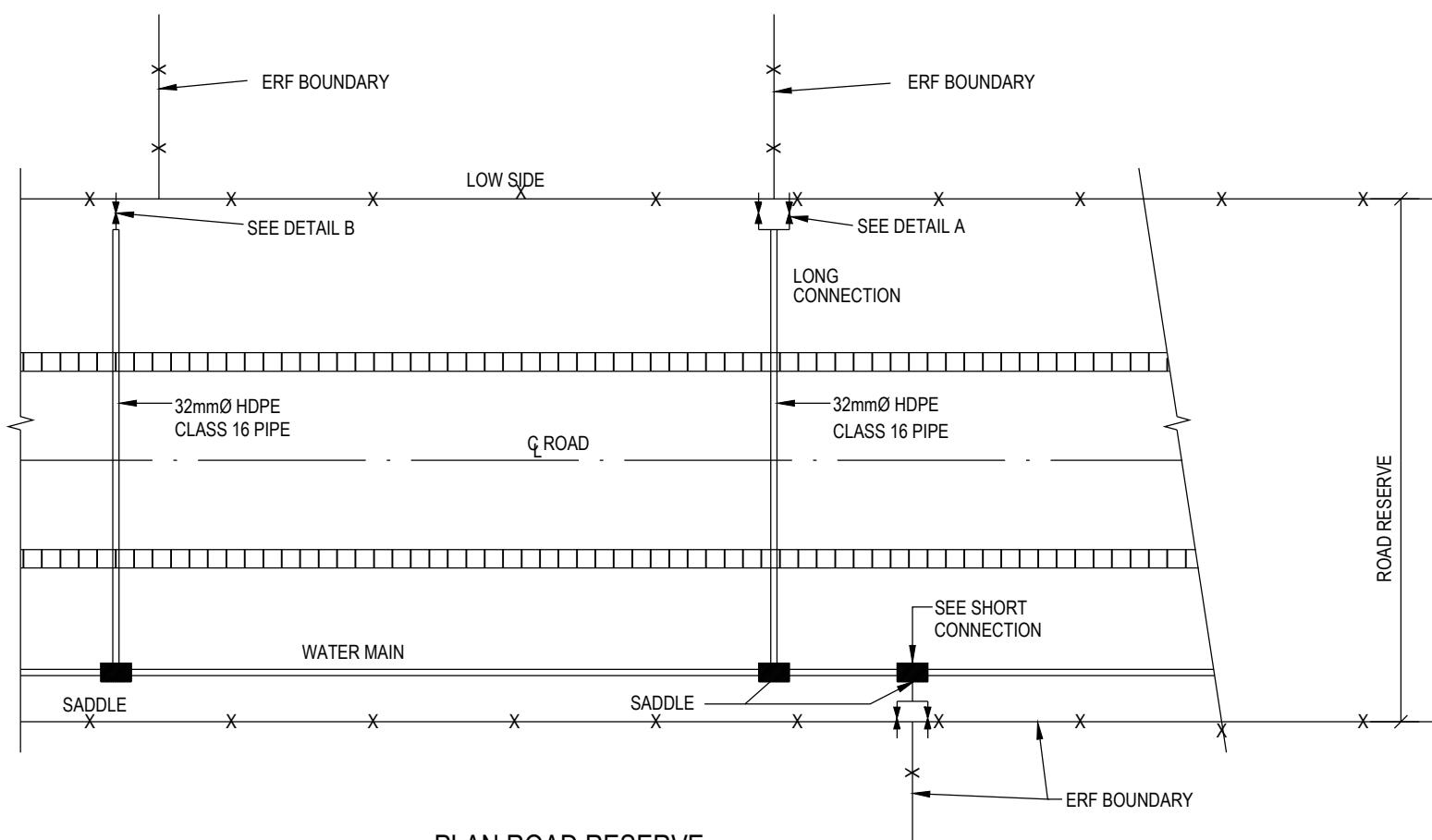




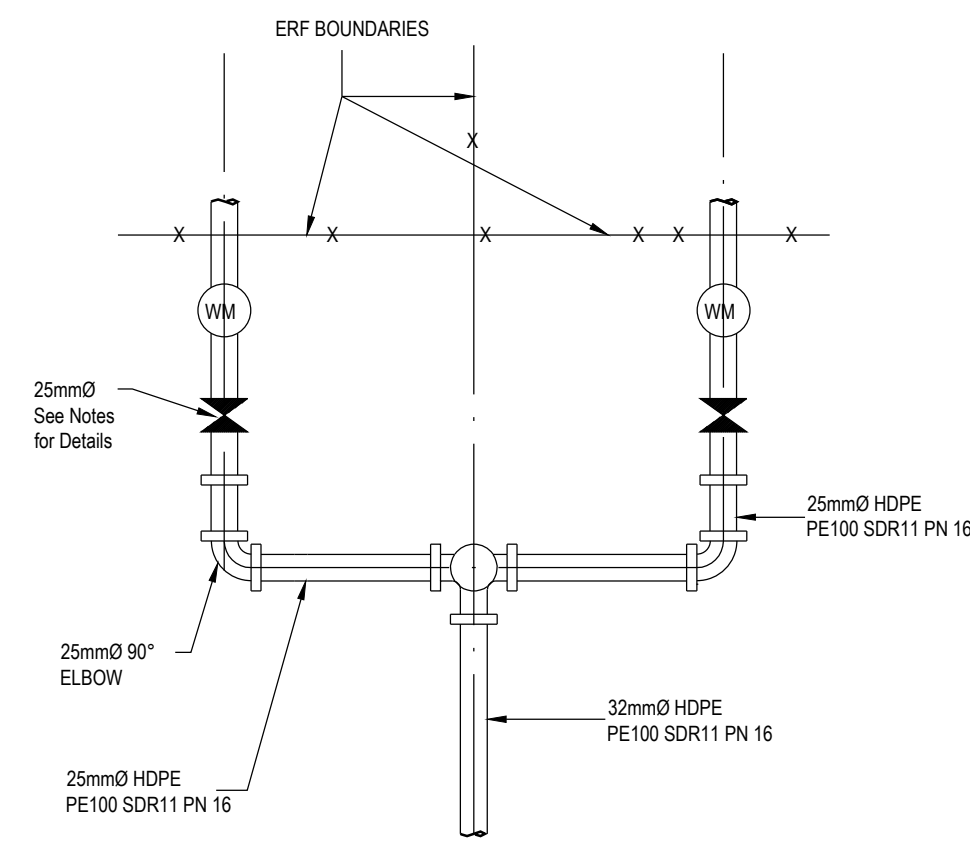
COSMO CITY
SCALE 1:5 000



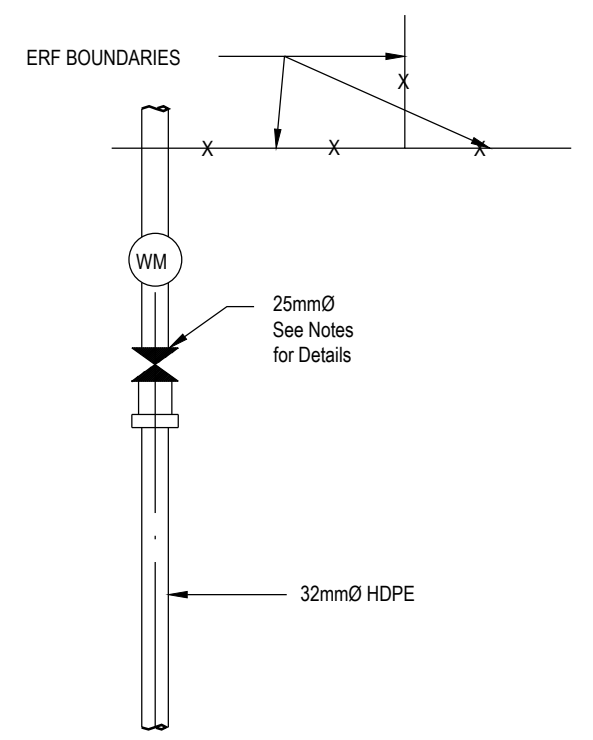
REVOLUTION ROOM



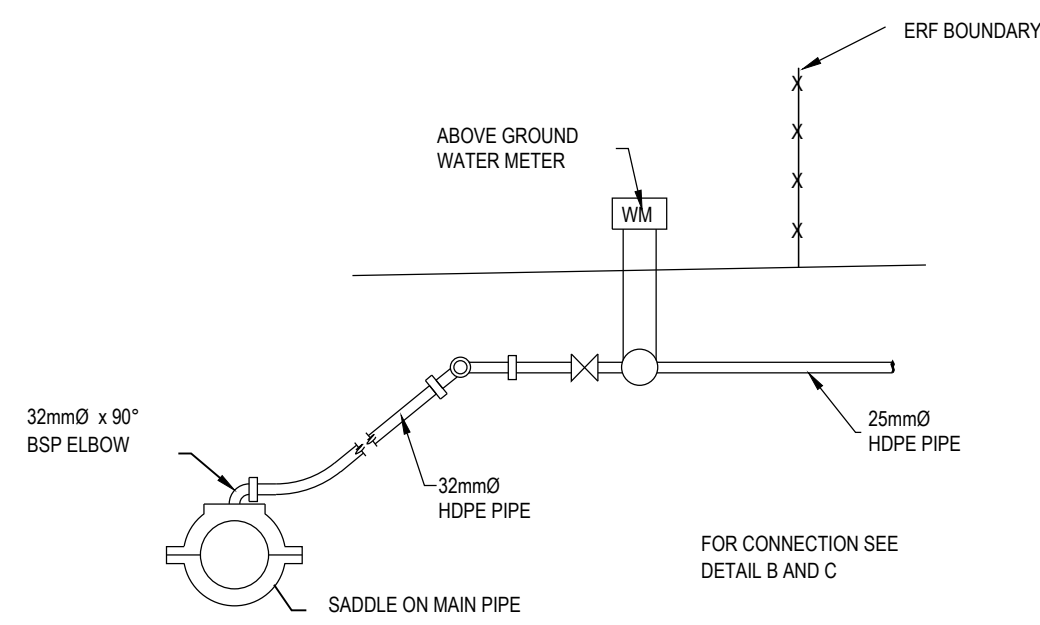
PLAN ROAD RESERVE
N.T.S.
SEE NOTE 4 FOR INDUSTRIAL CONNECTIONS



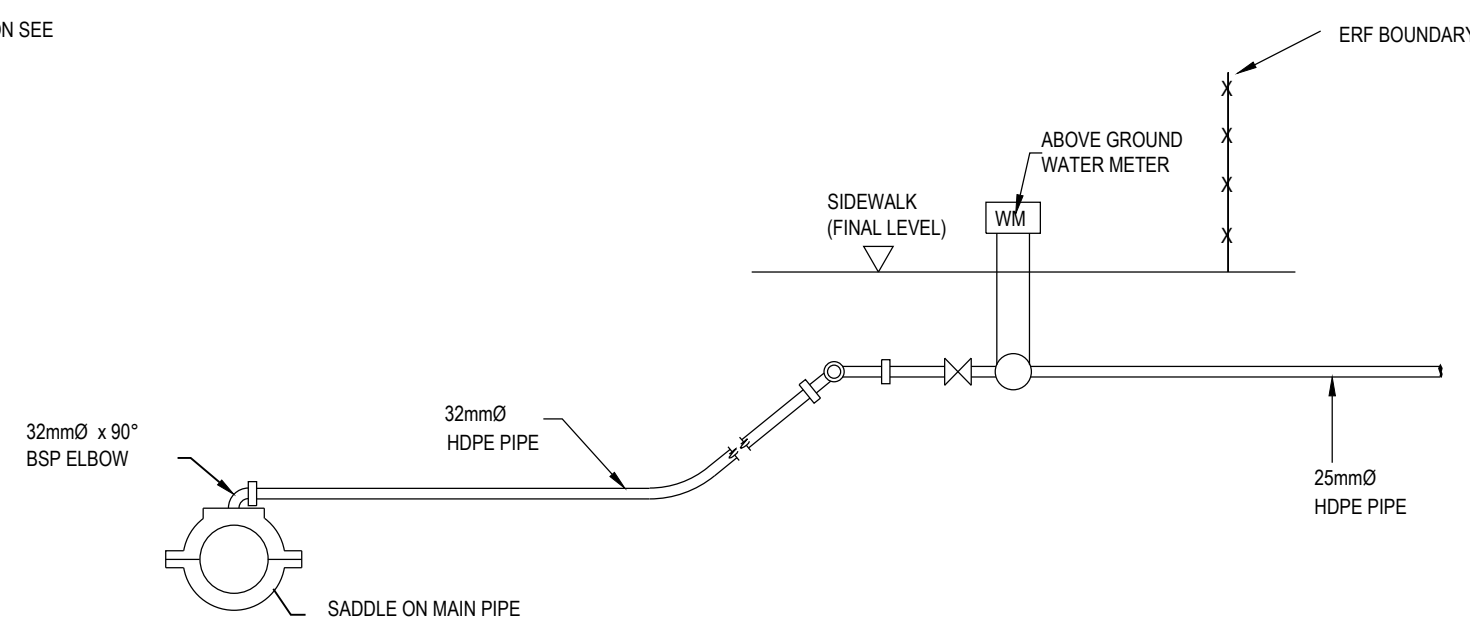
DETAIL A
(LONG DOUBLE ERF CONNECTION)
N.T.S.
SEE NOTE 4 FOR INDUSTRIAL CONNECTIONS



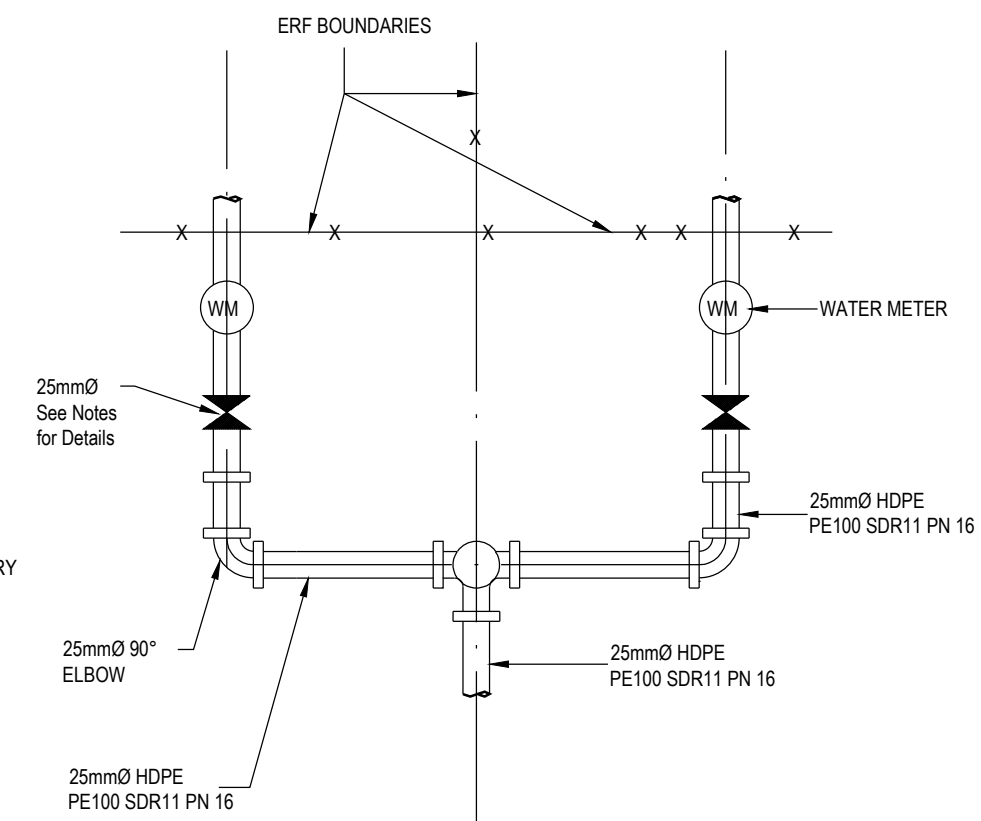
DETAIL B
(LONG AND SHORT SINGLE ERF CONNECTION)
N.T.S.
SEE NOTE 4 FOR INDUSTRIAL CONNECTIONS



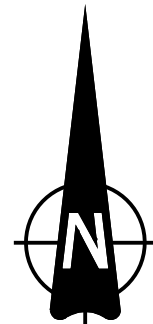
SECTION OF SHORT DOUBLE ERF CONNECTION
N.T.S.
SEE NOTE 4 FOR INDUSTRIAL CONNECTIONS



SECTION OF LONG DOUBLE ERF CONNECTION
N.T.S.



DETAIL C
(SHORT DOUBLE ERF CONNECTION)
N.T.S.
SEE NOTE 4 FOR INDUSTRIAL CONNECTIONS



Cosmo City WATER ERF CONNECTIONS

DRAWING No: JW100-DET05-W01

ISSUED FOR INFORMATION

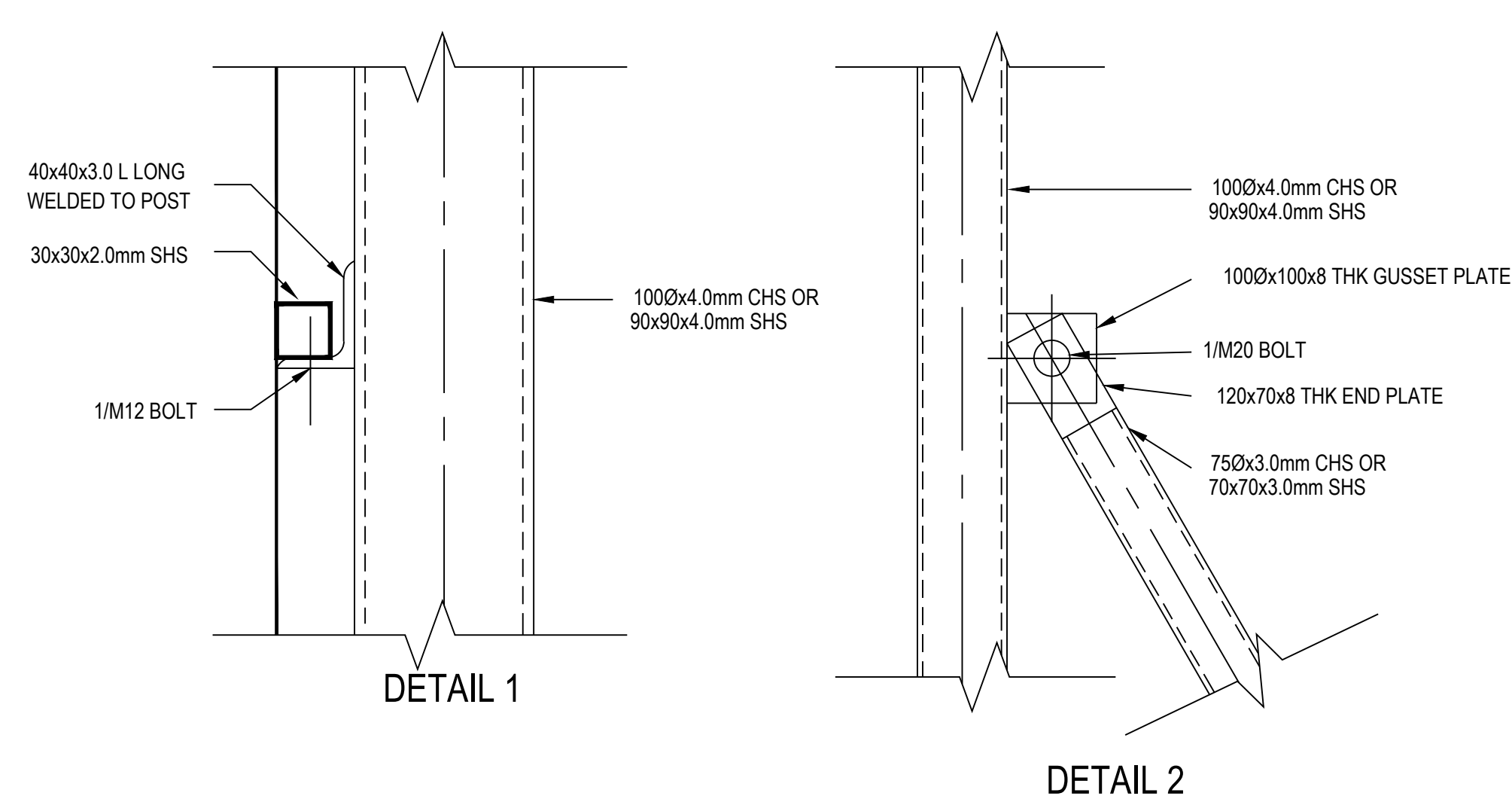
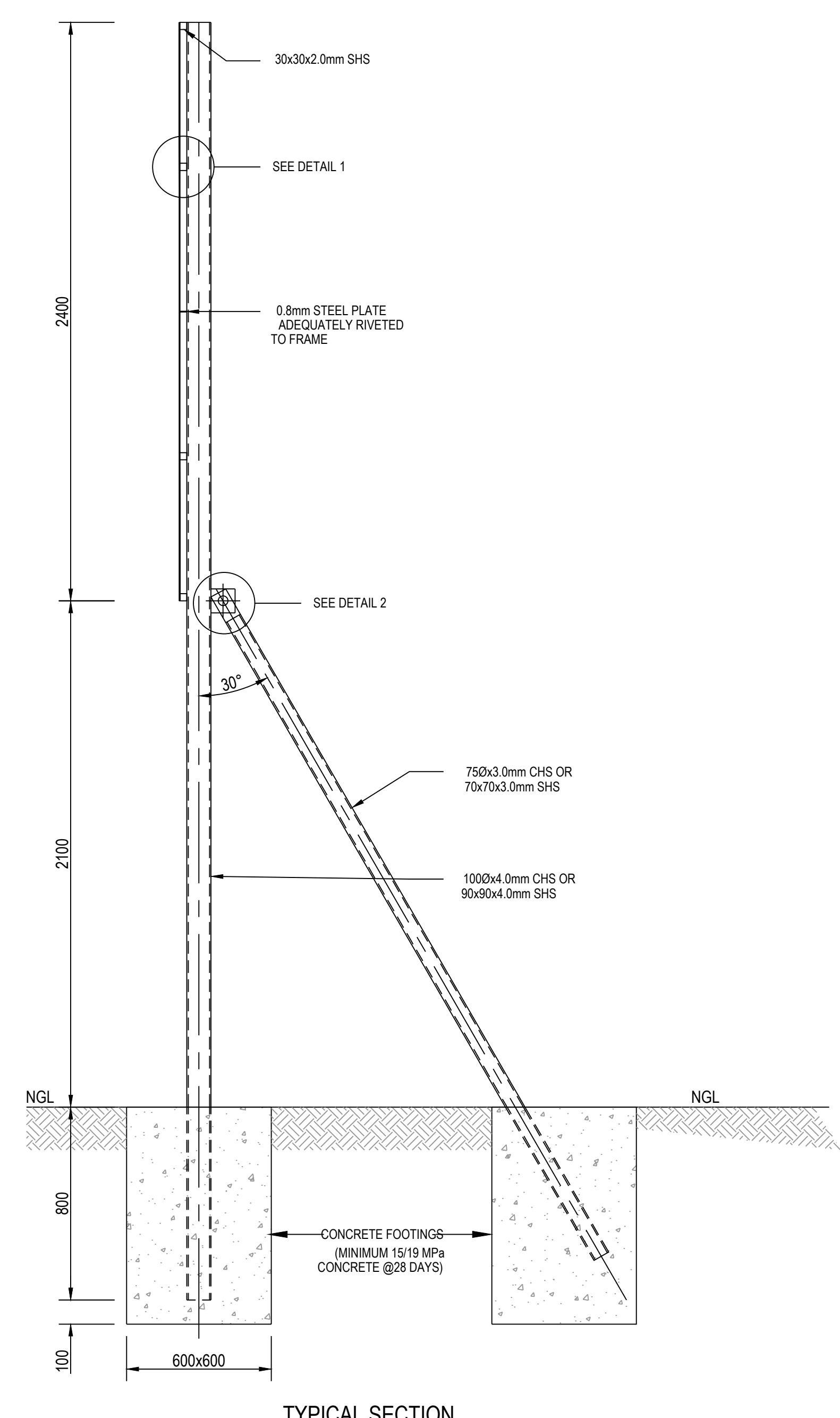
SCALE 1:2 658

City of Johannesburg

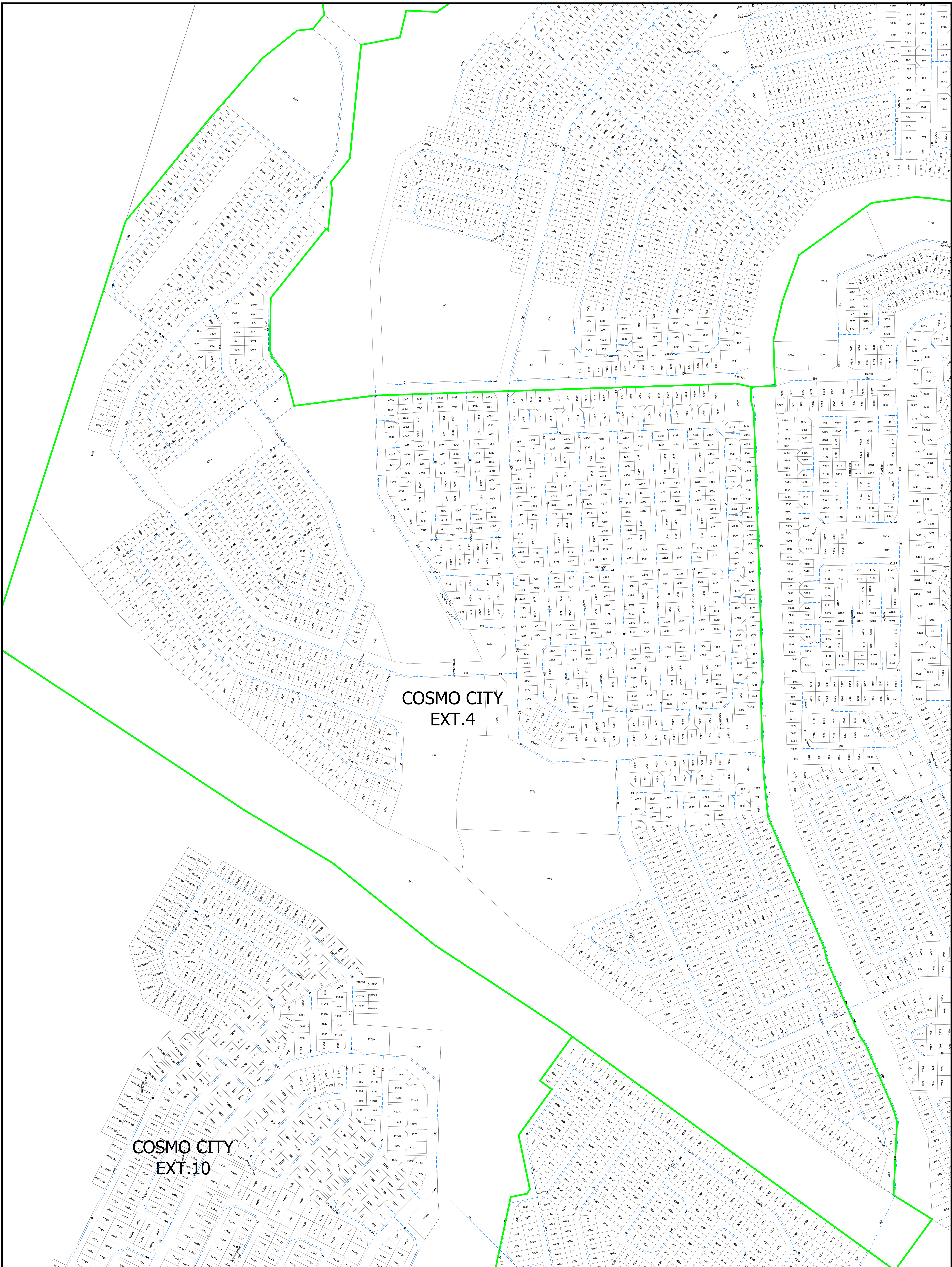
Telephone : +2711 688 1400
e-mail : info@water.co.za
Compiler : Geographical Information services
Projection: Transverse Mercator (Lo 28)
Datum: Hartbeeshoek 94 (WGS84 Ellipsoid)
Map Size: A0

INDEMNITY

Johannesburg Water SOC Ltd does not warrant, guarantee nor represent that the information, depictions, and drawings on this GIS map is accurate, correct, up-dated and authentic. Johannesburg Water shall not be liable for any inaccuracies and defects, or otherwise in the GIS map nor for any damage occasioned to or suffered by the user of such map by reason of such defect or inaccuracies. The user admits having inspected the GIS map to his satisfaction and that no guarantees or warranties of any nature were made by Johannesburg Water regarding the condition or quality of the GIS map or any of the improvements, person or accessories thereof. This further acknowledges and its is recorded that the user use the said GIS information at his own risk, and for his own personal use. The use of this map shall not duplicate, sell or lease to any third party this map or the information contained therein. Upon completion of use of the map the map shall be returned to Johannesburg Water GIS or destroyed by the user thereof. Unless accompanied by an official wayleaves approval letter signed by an official of Johannesburg Water who has the delegated authority to approve wayleaves, this map does not constitute a wayleaves approval. Copyright Act 94 of 1978 in terms of section 50) used together with section 53B).

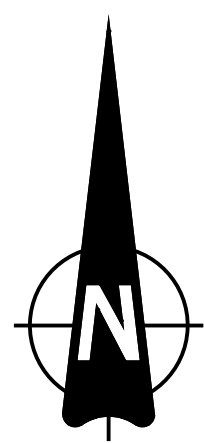


NOTE:
ALL WELDS TO BE 6mm FILLET
WELD ALL AROUND UNLESS
OTHERWISE SPECIFIED



COSMO CITY
EXT.4

COSMO CITY
EXT.10



Cosmo City GENERAL LAYOUT-COSMO CITY EXT 4

DRAWING No: JW14335/EXT.4/103

ISSUED FOR INFORMATION

SCALE 1:5 121

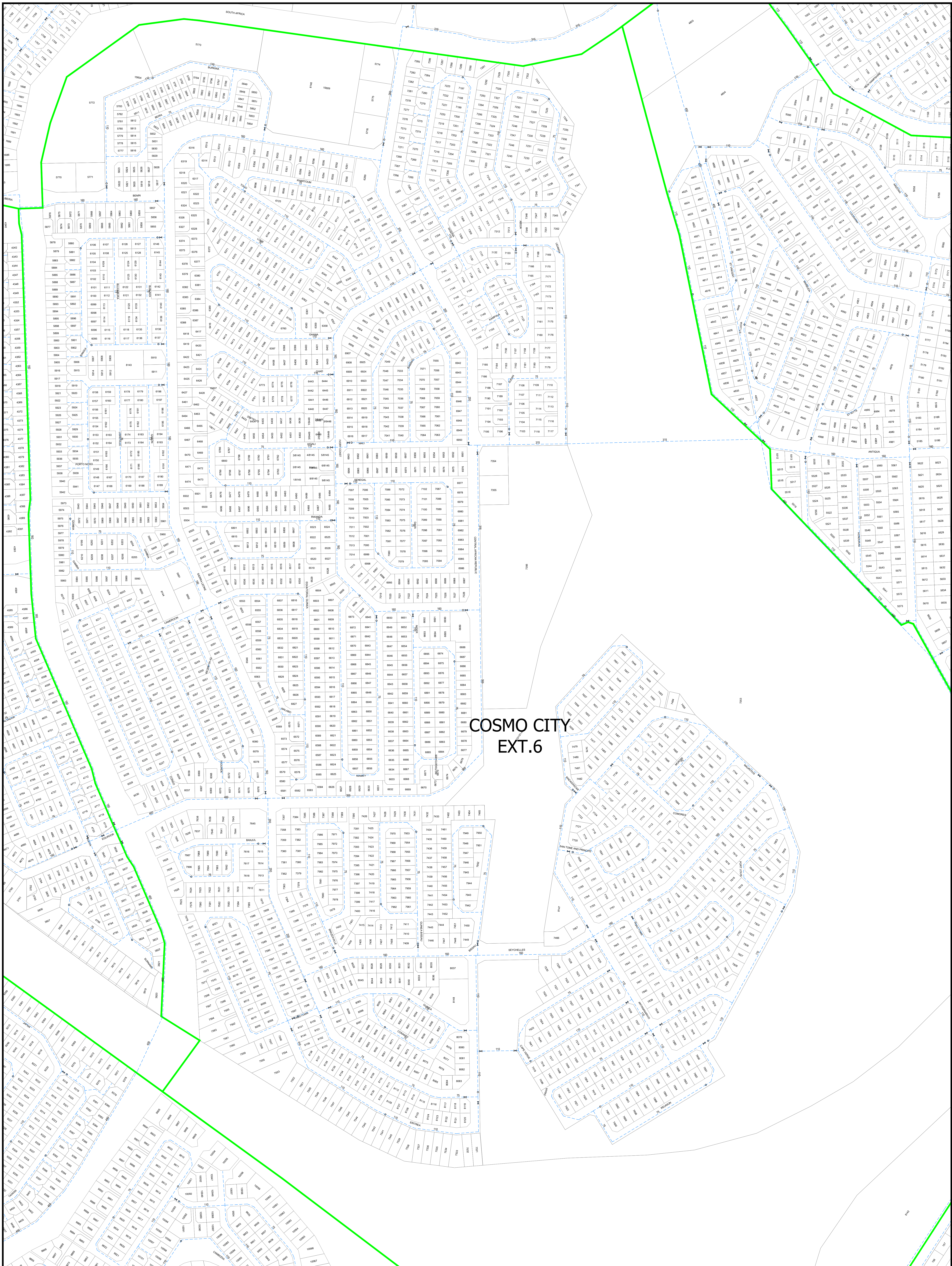
Legend	
	Water pipe
	Property Stand
	CoJ_TOWNSHIP

City of Johannesburg

Telephone: +2711 688 1400
e-mail: info@water.co.za
Compiler: Geographical information services
Projection: Transverse Mercator (Lo 29)
Datum: Hartbeespoort 94 (WGS84 Ellipsoid)
Map Size: A0

INDEMNITY

Johannesburg Water SOC Ltd does not warrant, guarantee or represent that the information, depiction and drawing on this GIS map is accurate, correct, up-to-date and authentic. Johannesburg Water shall not be liable for any inaccuracies and omissions or otherwise in the GIS map for any damage occasioned by or suffered by the user or any of his representatives of any nature were made by Johannesburg Water regarding the GIS map or its use or the GIS map or any of his representatives. Johannesburg Water shall not be liable for any damage occasioned by or suffered by the user or any of his representatives. The user shall be responsible for the accuracy and completeness of the information contained therein. Upon completion of use of the map the user shall be returned to Johannesburg Water SOC Ltd or destroyed by the user thereof. Johannesburg Water who has the copyright authority to approve waterworks, this map does not constitute a waterworks approval. Copyright Act 94 of 1978 in terms of section 5(5) need together with section 10(1).



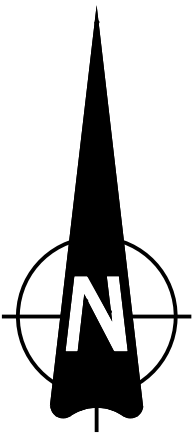
Cosmo City

GENERAL LAYOUT-COSMO CITY EXT 6

DRAWING No: JW14335/EXT.6/104

ISSUED FOR INFORMATION

SCALE 1:5 121



Legend	
	Water pipe
	Property Stand
	Col. TOWNSHIP

City of Johannesburg

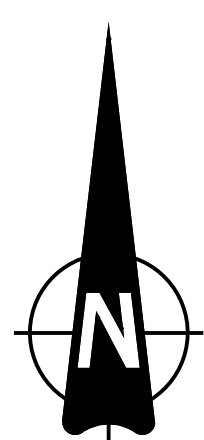
Telephone: +2711 688 1400
e-mail: info@water.co.za
Compiler: Geographical information services
Projection: Transverse Mercator (Lo 29)
Datum: Harlebeershoek 94 (WGS84 Ellipsoid)
Map Size: A0

INDEMNITY

Johannesburg Water SOC Ltd does not warrant, guarantee or represent that the information, depiction and drawing on this GIS map is accurate, correct, up-to-date and authentic. Johannesburg Water shall not be liable for any inaccuracies and omissions in the GIS map or for any damage, loss or injury caused by the use of the GIS map. The user acknowledges that the use of the GIS map is for informational purposes only and that the user is responsible for the accuracy and completeness of the information contained therein. Upon completion of use of the map the user shall be required to return the map to the City of Johannesburg Water SOC Ltd.

MO CITY
T.16

**COSMO CITY
EXT.15**



DRAWING No: JW14335/EXT.11/105

SCALE 1:2 658

Legend

- Water pipe
- Property_Stand
- CoJ_TOWNSHIP

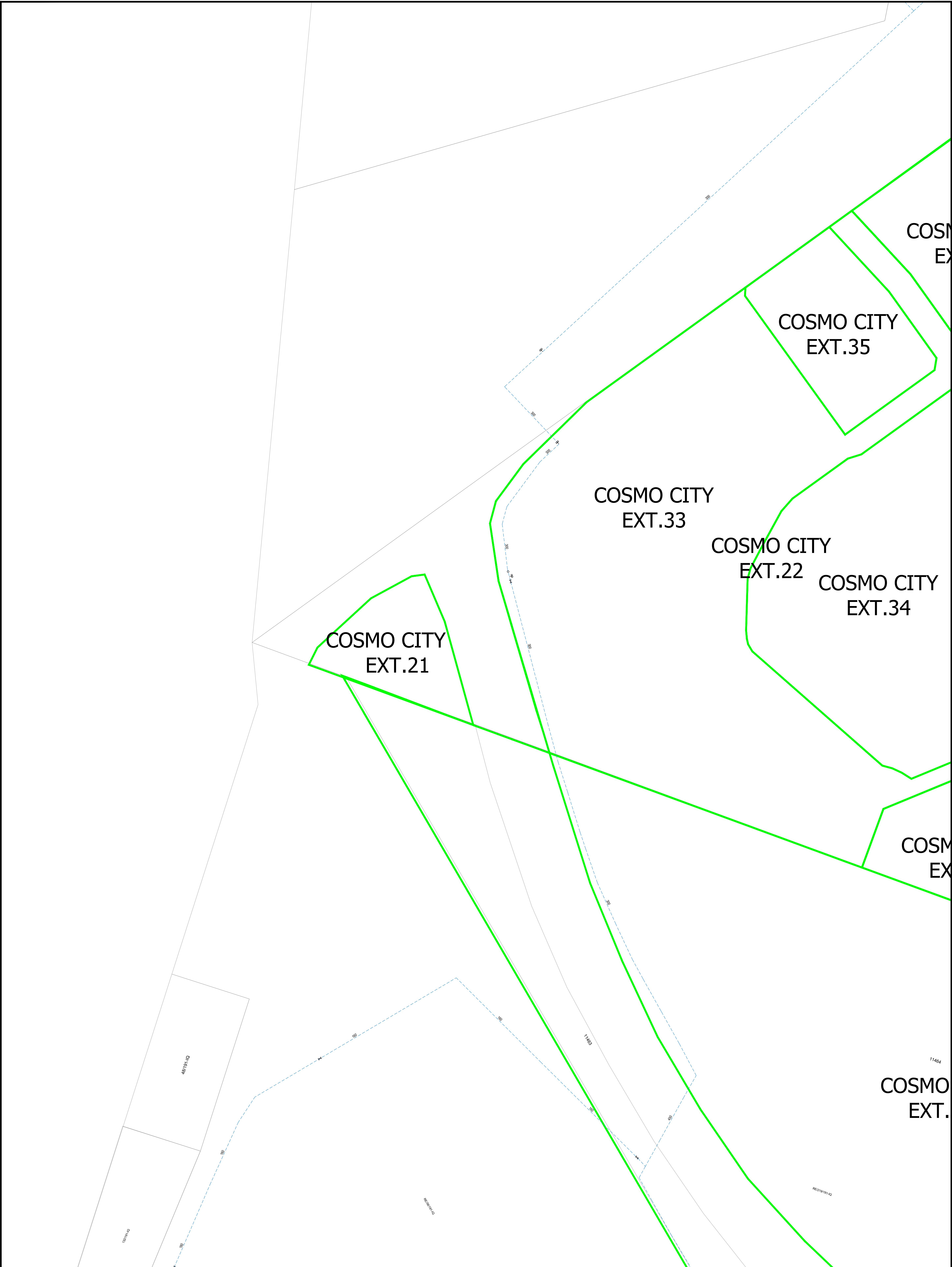
Telephone : +2711 688 1400
e-mail : info@water.co.za
Compiler : Geographical Information services
Projection: Transverse Mercator (Lo 29)
Datum: Hartebeeshoek 94 (WGS84 Ellipsoid)
Map Size: A0

INDEMNITY

Johns Hopkins Water SOC Ltd does not warrant, guarantee or represent that the information, data, logs, disposition, and drawings on this GIS map is accurate, current, up-dated and available. Johns Hopkins Water shall not be liable for any inaccuracies and/or omissions, or for any damages, including consequential damages, that may be incurred or suffered by the user of such map by reason of such defect or inaccuracies. The user admits having inspected the map to his satisfaction and that no guarantee or warranty of any nature were made by Johns Hopkins Water regarding the map or its contents. The user agrees to hold Johns Hopkins Water harmless and to indemnify and defend Johns Hopkins Water from and against all claims, damages, costs and expenses, including reasonable attorneys' fees, that may be asserted against or incurred by Johns Hopkins Water as a result of the user's use of the GIS information in any way and for any reason, whether or not such claim, damage, cost or expense is caused in whole or in part by the negligence of Johns Hopkins Water. This further acknowledgment and agreement is acknowledged that the user uses the GIS information at his own risk and for his own purposes. The user agrees to hold Johns Hopkins Water harmless and to indemnify and defend Johns Hopkins Water from and against all claims, damages, costs and expenses, including reasonable attorneys' fees, that may be asserted against or incurred by Johns Hopkins Water as a result of the user's use of the map or the information contained therein. Upon completion of use of the map the user shall be responsible for returning the map intact and undamaged to the user, and for not allowing the map to be lost, destroyed or the user thereof.

Upon acceptance by an official reviewing approval letter issued by an official, the user agrees to hold Johns Hopkins Water harmless and to indemnify and defend Johns Hopkins Water from and against all claims, damages, costs and expenses, including reasonable attorneys' fees, that may be asserted against or incurred by Johns Hopkins Water as a result of the user's use of the map or the information contained therein. Upon completion of use of the map the user shall be responsible for returning the map intact and undamaged to the user, and for not allowing the map to be lost, destroyed or the user thereof.

Copyright © 2001 by Johns Hopkins Water SOC Ltd. All rights reserved. This map is a registered trademark of Johns Hopkins Water SOC Ltd. All other trademarks are the property of their respective owners.



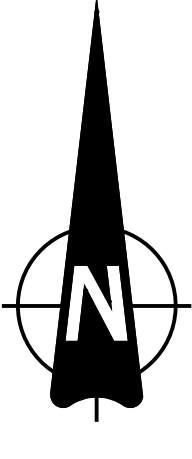
Cosmo City

GENERAL LAYOUT-COSMO CITY EXT 21

DRAWING No: JW14335/EXT.15/107

ISSUED FOR INFORMATION

SCALE 1:2 658

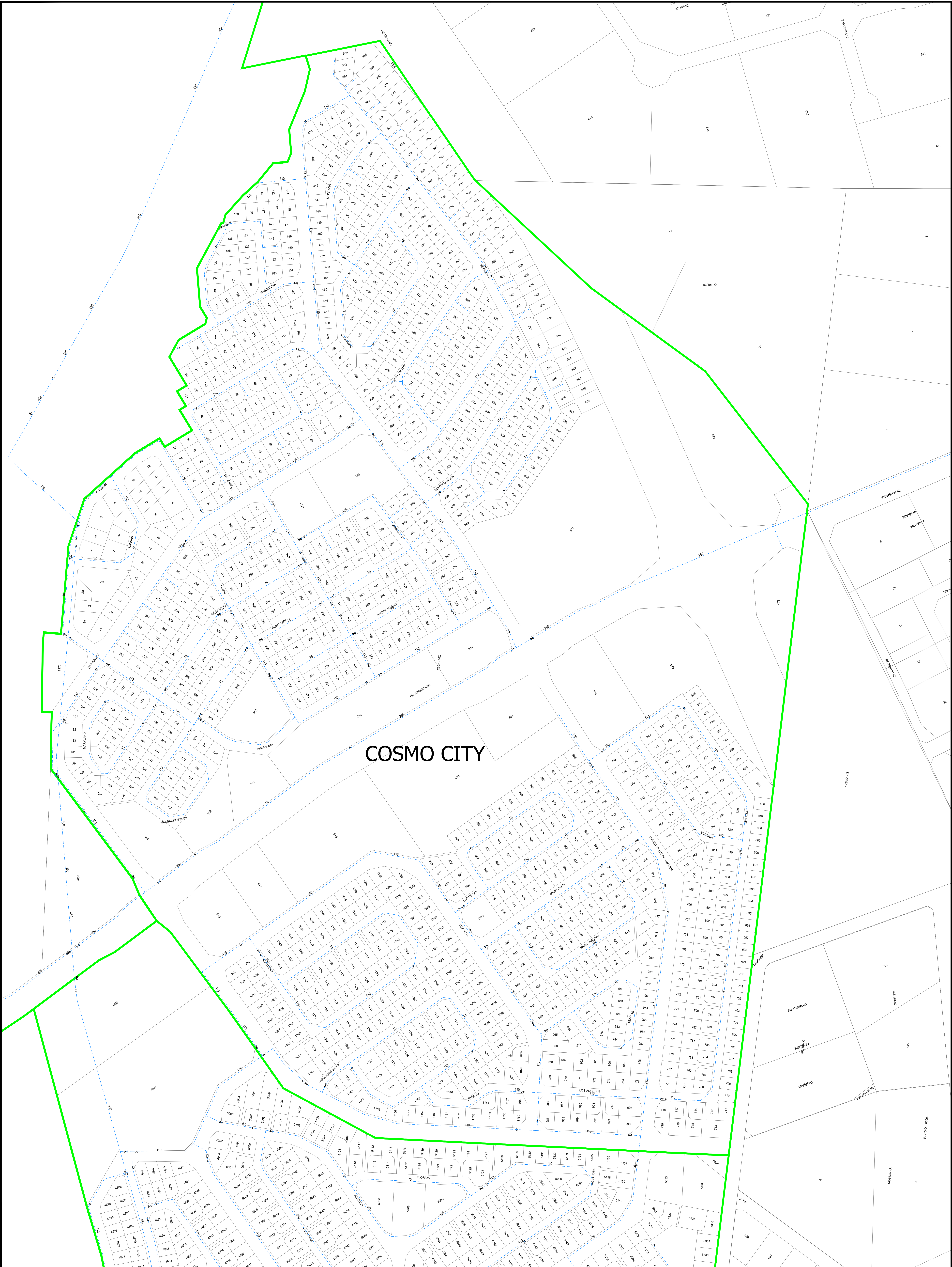


Legend	
	Water pipe
	Property Stand
	CoJ_TOWNSHIP

City of Johannesburg	
Telephone :	+2711 688 1400
e-mail :	info@water.co.za
Compiler :	Geographical information services
Projection :	Transverse Mercator (Lo 29)
Datum :	Hartebeeshoek 94 (WGS84 Ellipsoid)
Map Size :	A0

INDEMNITY

Johannesburg Water SOC Ltd does not warrant, guarantee nor represent that the information, depiction, and drawing on this GIS map is accurate, correct, up-to-date and authentic. Johannesburg Water shall not be liable for any inaccuracies and omissions, or otherwise in the GIS map nor for any damage, loss, or injury, or otherwise, of any nature or kind, arising from the use of this GIS map. The user accepts having inspected the GIS map to be satisfactory and that no guarantee or warranties of any nature were made by Johannesburg Water regarding the accuracy or quality of the GIS map or any of the information contained therein. This further acknowledges and is a condition that the user shall use the GIS map for their own use and for their own personal use. The use of this map shall not constitute a warranty or approval of the map or the information contained therein. Upon completion of use of this map, the map shall be returned to Johannesburg Water SOC Ltd. The map shall be accompanied by an official wayleaves approval letter signed by an official of Johannesburg Water who has the delegated authority to approve wayleaves. This map does not constitute a wayleaves approval. Copyright Act 94 of 1978 in terms of section 5(5) read together with section 1(3).

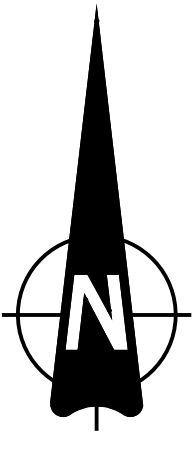


Cosmo City
GENERAL LAYOUT DRAWING

DRAWING No: JW14335/GP/100

ISSUED FOR INFORMATION

SCALE 1:2 658



Legend	
	Water pipe
	Property Stand
	Col. TOWNSHIP

City of Johannesburg

Telephone : +2711 688 1400
e-mail : info@water.co.za
Compiler : Geographical information services
Projection : Transverse Mercator (Lo 29)
Datum : Hartbeespoort 94 (WGS84 Ellipsoid)
Map Size : A0

INDEMNITY
Johannesburg Water SOC Ltd does not warrant, guarantee or represent that the information, depiction, and drawing on this GIS map is accurate, correct, up-to-date and authentic. Johannesburg Water shall not be liable for any inaccuracies or omissions, or otherwise in the GIS map for any damage, loss, or liability of any nature whatsoever resulting from the use of this map. The user acknowledges and warrants that the use of this map is for informational purposes only and is not intended for any other purpose. The user shall be responsible for any damage, loss, or liability of any nature whatsoever resulting from the use of this map. The user shall be responsible for any damage, loss, or liability of any nature whatsoever resulting from the use of this map. The user shall be responsible for any damage, loss, or liability of any nature whatsoever resulting from the use of this map.