

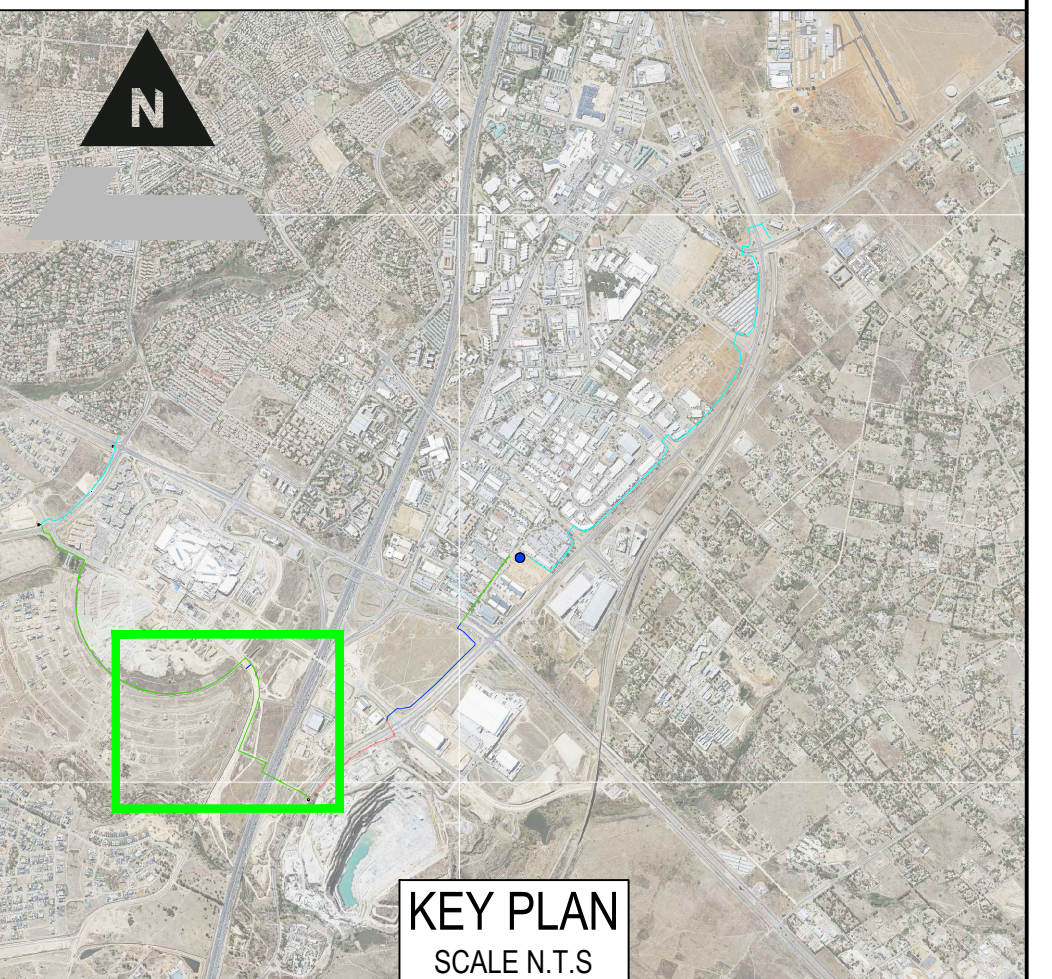
**GENERAL NOTES:**

- DRAWINGS MUST NOT BE SCALED.
- THIS DRAWING TO BE READ IN CONJUNCTION WITH THE GENERAL NOTES.
- THIS DRAWING TO BE READ IN CONJUNCTION WITH THE GENERAL NOTES.

**LEGEND**

- 700mm Ø STEEL PIPELINE
- 315mm Ø mPVC PIPELINE
- EXISTING WATER PIPELINE
- EXISTING SEWER PIPELINE
- EXISTING ESKOM OVERHEAD CABLES
- EXISTING DFA CABLES
- WETLAND AREA
- NODES
- TEST PITS
- BOREHOLES
- ISOLATING VALVE
- AIR VALVE
- SCOUR VALVE

COORDINATES LIST FOR BULK WATER SUPPLY PIPELINE WGS-84 LO-29			
POINT	Y-COORD	X-COORD	INVERT LEVEL
PI61	89167.058	2879835.365	1457.409
PI62	89077.991	2879614.437	1466.701
PI63	89057.283	2879547.325	1466.946
PI64	88056.718	2879515.696	1468.061
PI65	89080.046	2879465.655	1470.088
PI66	89071.075	2879436.737	1471.527
PI67	89077.607	2879433.403	1471.526
PI68	89077.183	2879420.636	1471.527
PI69	89086.728	2879395.819	1472.176
PI70	89101.097	2879378.360	1472.761
PI70.1	89125.956	2879400.763	1474.008
PI71	89130.742	2879342.343	1474.013

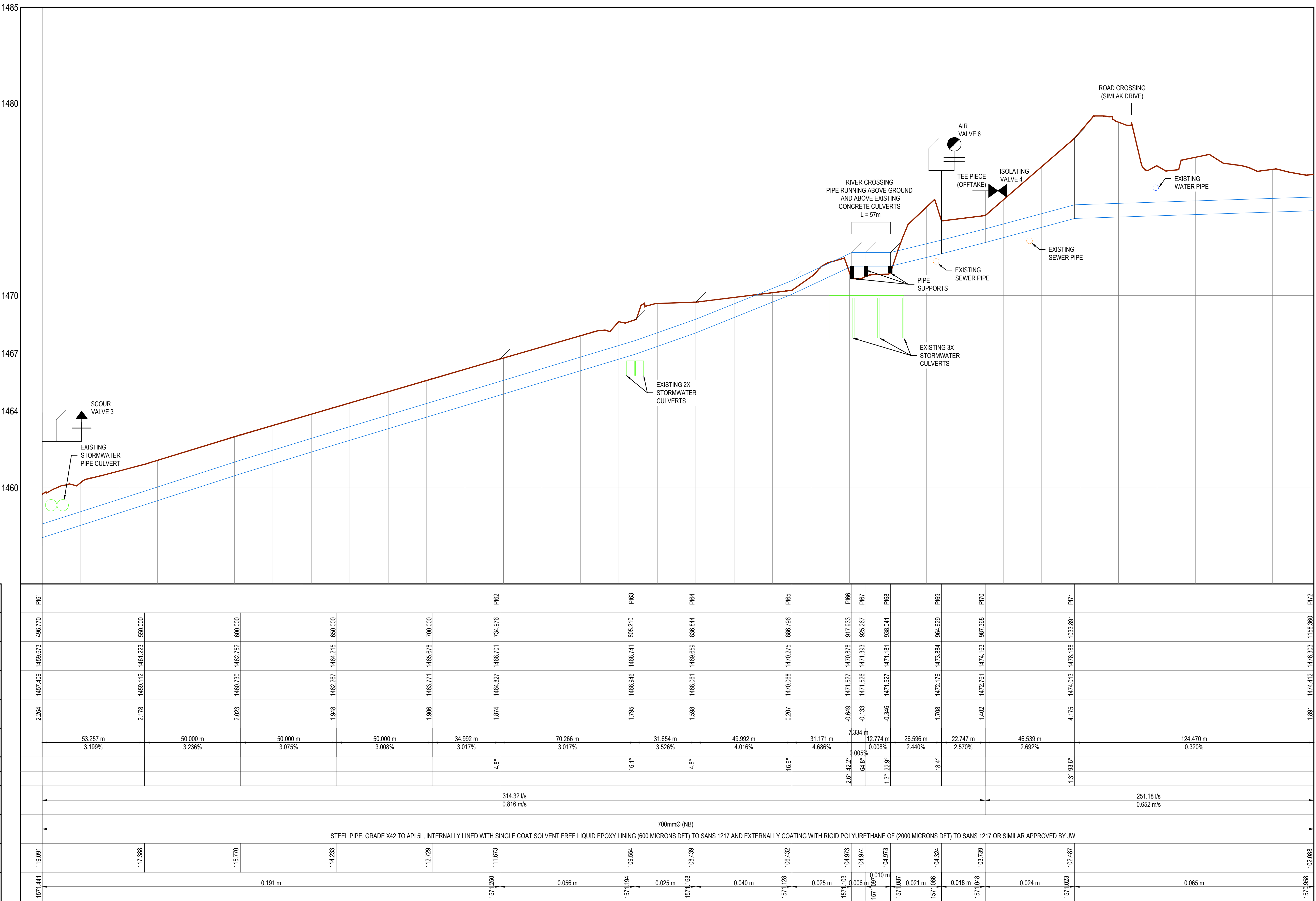


- LEGEND**
- NATURAL GROUND LEVEL (NGL) 1464
  - WATER PIPES
  - PIPE JACKING / HORIZONTAL DRILLING
  - PREFABRICATED BEND > 5°

**SCALES:**  
Horizontal 1:1000  
Vertical 1:100

DATUM 1455

PI
CHAINAGE (m)
GROUND LEVEL (m)
PIPE INVERT (m)
DEPTH TO INVERT (m)
PIPE LENGTH / SLOPE
CHANGE IN DIRECTION
PEAK FLOW / VELOCITY
PIPE SIZE / PIPE TYPE
STATIC PRESSURE (m)
HYDRAULIC GRADE (m) / HEAD LOSS



LONGSECTION: PI61 - PI71

**CONSULTING ENGINEERS**

**ZUTARI**  
IMPACT. ENGINEERED.

OXFORD CORNER  
JELICHO AVENUE  
ROSEBANK, JOHANNESBURG  
SOUTH AFRICA  
TEL: +27 11 214 4500

CLIENT  
17 HARRISON STREET  
MARSHALLTOWN  
2107

DESIGNED	T. SHABALALA	JULY 2021
DRAWN	T. SHABALALA	JULY 2021
CHECKED	M. LUSUNZI	JULY 2021
APPROVED BY:	C. KAN	JULY 2021
ECSA REG. No.		
CHECKED BY:		
ECSA REG. No.		

**Johannesburg Water**

17 HARRISON STREET  
MARSHALLTOWN  
2107

TEL: (011) 688-1400  
FAX: (011) 688-1529

**Joburg**

HALFWAY HOUSE WATER UPGRADE

PLAN AND LONGSECTION:  
SHEET 7 OF 10

APPROVAL BY JW DEPOT		SCALE	AMENDMENTS		
CHECKED			REV.	DESCRIPTION	DATE:
APPROVED BY:			TO	ISSUED FOR TENDER	10/2021
	SIGNATURE	DATE			
APPROVAL BY JW PLANNING					
CHECKED					
APPROVED BY:					
	SIGNATURE	DATE			

**NOTES:**

- PIPE DESCRIPTION: 700mm Ø (NB) STEEL PIPE, GRADE X42 TO API 5L.
- REFER TO GEOTECHNICAL INVESTIGATION REPORT FOR DETAILED GEOTECHNICAL INFORMATION ALONG THE PIPELINE ROUTE.
- REFER TO DWG NO. 111242-0000-ORG-WW-0500 FOR TYPICAL AIR VALVE DETAIL.
- REFER TO DWG NO. 111242-0000-ORG-WW-0501 FOR TYPICAL ISOLATING VALVE DETAIL.
- REFER TO DWG NO. 111242-0000-ORG-WW-0502-0503 FOR TYPICAL SCOUR VALVE CHAMBER DETAIL.
- REFER TO DWG NO. 111242-0000-ORG-WW-0504 FOR TYPICAL DETAILS FOR TRENCH EXCAVATION AND BACKFILL.
- REFER TO DWG NO. 111242-0000-ORG-WW-0506 FOR TYPICAL PIPE JACKING DETAIL.
- EXISTING SERVICES LEVELS AND POSITIONS TO BE CONFIRMED ON SITE.

**DRAWING No.**

111242 - 0000-DRG-WW-0307 - TO

PROJECT No. DRAWING No. REV.

A0 SHEET 7 OF 10

ORIGINAL PAGE SIZE

FILE No.