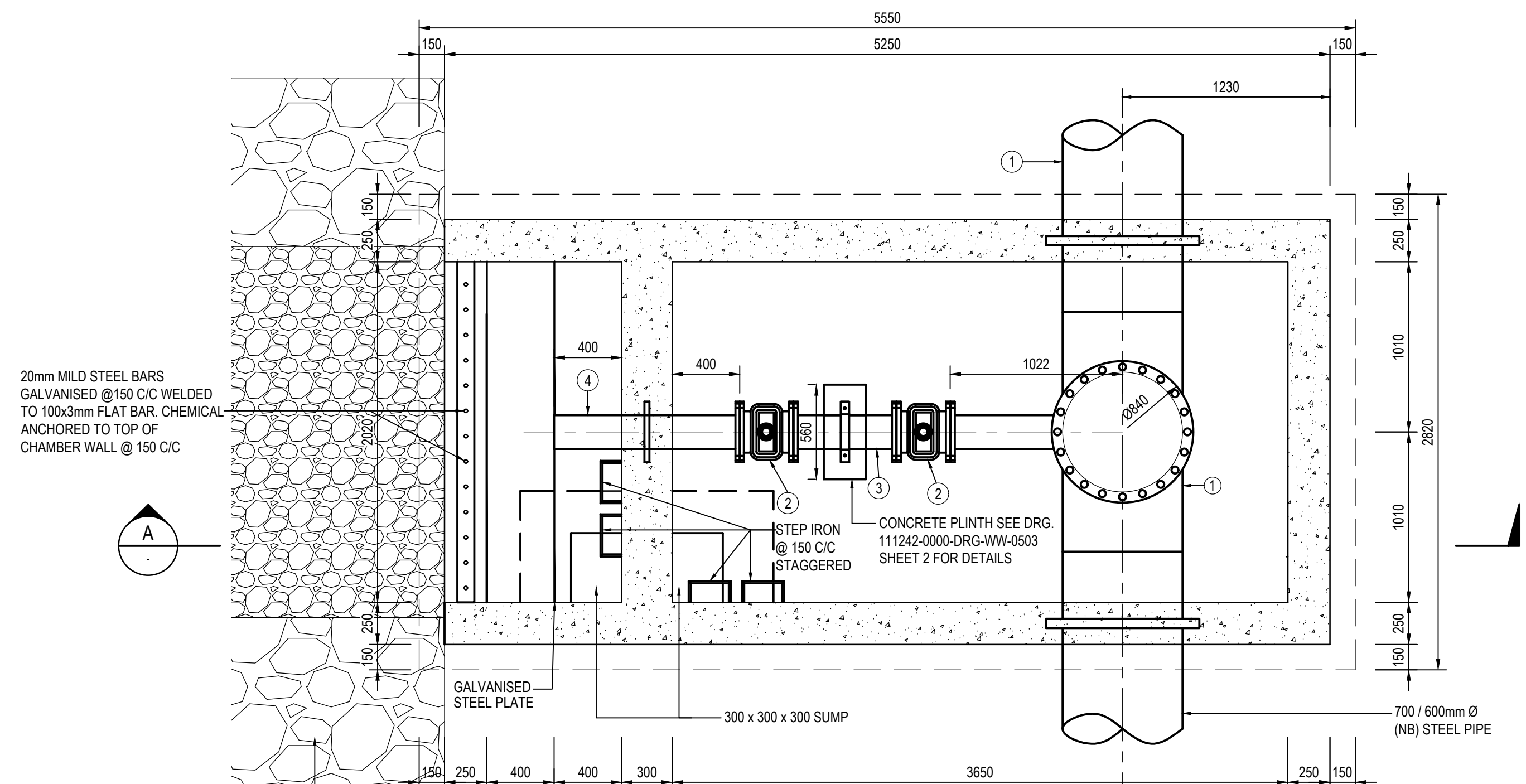


GENERAL NOTES:

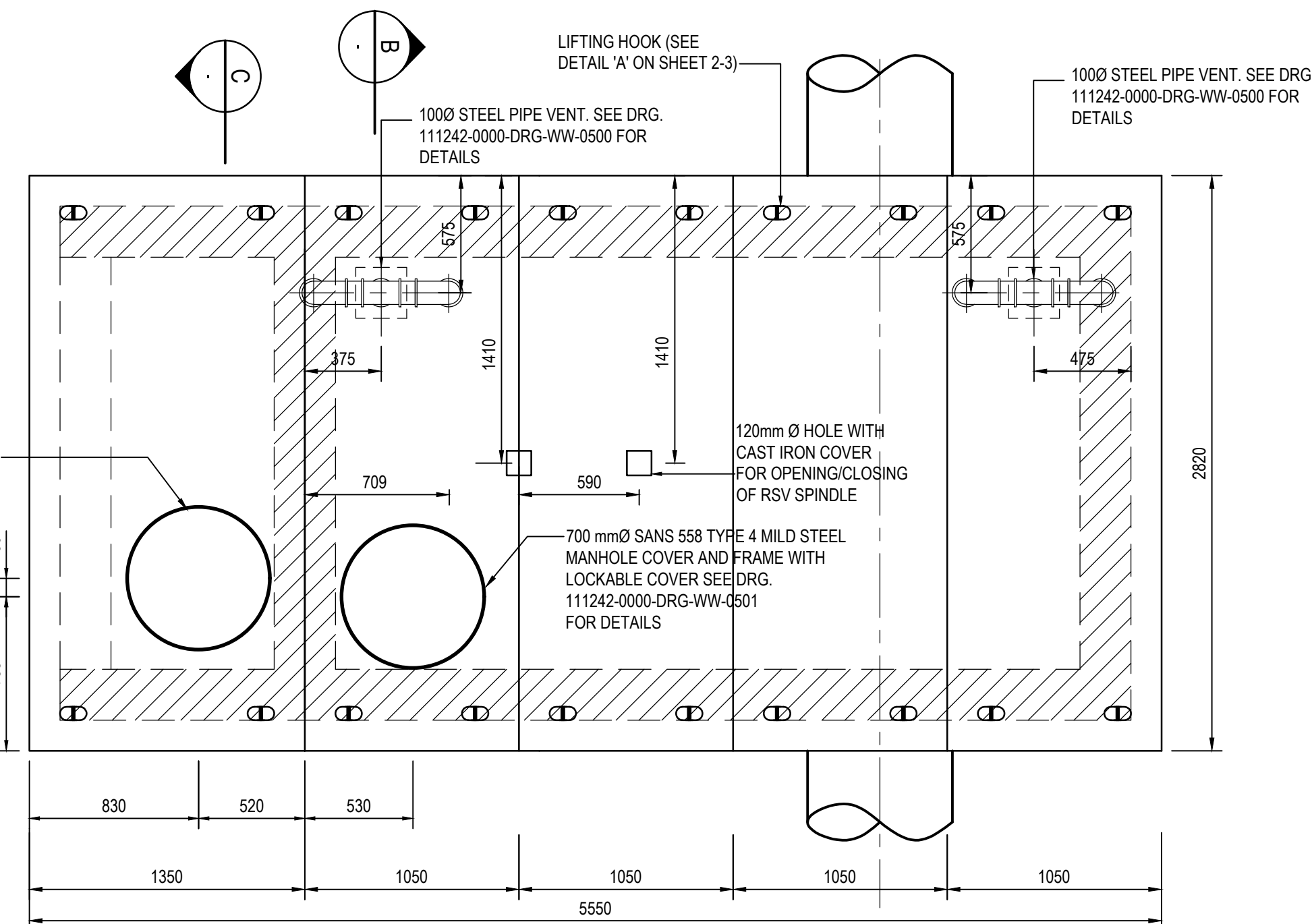
1. DRAWINGS MUST NOT BE SCALED.
2. THIS DRAWING TO BE READ IN CONJUNCTION WITH THE GENERAL NOTES, DRAWINGS AND ALL PROJECT SPECIFICATIONS.
3. ACCORDING TO THE COPYRIGHT ACT (ACT No 98 OF 1978) NO PART OF THIS DOCUMENT MAY BE REPRODUCED, STORED IN A RETRIEVAL SYSTEM OR TRANSMITTED IN ANY FORM OR BY ANY MEANS WHATSOEVER INCLUDING MECHANICAL, ELECTRONIC, PHOTOCOPYING, MICROFILMING OR ANY OTHER SYSTEM OF INFORMATION STORAGE WITHOUT WRITTEN PERMISSION OF ZUTARI.

NOTES:

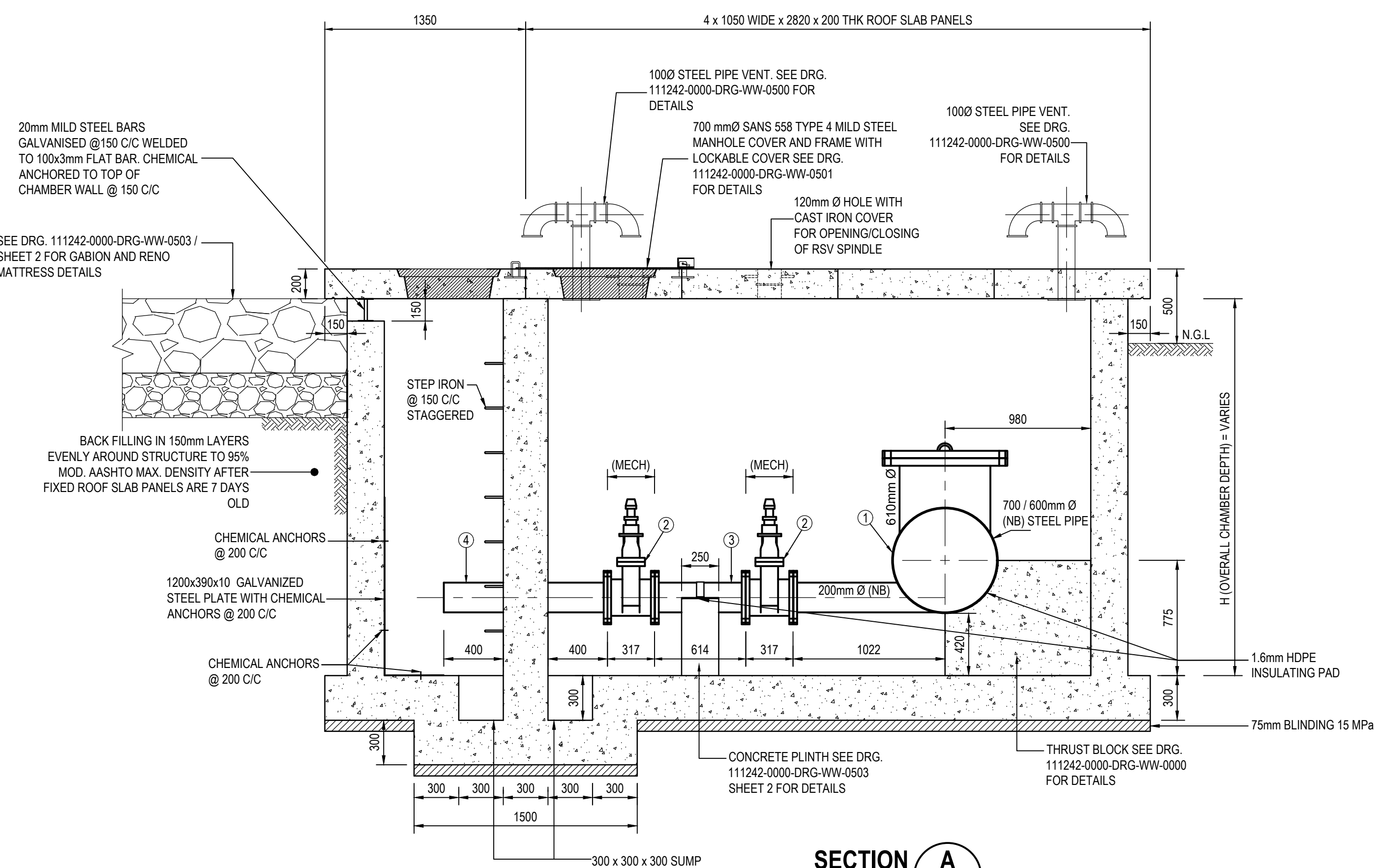
1. RE-INFORCEMENT STEEL SHALL BE MINIMUM OF 50mm CLEAR OF PUDDLE PIPE AND FLANGES.
2. ALL FLANGES TO BE DRILLED OFF-CENTRE TO SANS 1123 TABLE 16003 OR 25003 AS SPECIFIED IN SCHEDULE OF FITTINGS. PUDDLE FLANGES SIMILAR TO SANS 1123 TABLE 16003 OR 25003, AS SPECIFIED, BUT UNDRILLED AND SHOP FITTED AND COATED. CONNECTING FLANGE HOLES IN OPPOSITE FLANGES MUST BE IN LINE.
3. ALL STEELWORK TO BE FINISHED ACCORDING TO PROJECT SPECIFICATIONS.
4. ALL VALVES ACCORDING TO PROJECT SPECIFICATIONS.
5. ALL SPECIALS ACCORDING TO PROJECT SPECIFICATIONS.
6. ALL JOINTING BOLTS AND NUTS TO BE HOT-DIP GALVANISED.
7. THE QUANTITIES IN THE PIPE SPECIAL SCHEDULE ARE FOR ONE CHAMBER ONLY.
8. A COMPLETE SET OF DETAILED SHOP DRAWINGS OF ALL FITTINGS MUST BE SUBMITTED FOR THE ENGINEER'S APPROVAL, PRIOR TO FABRICATION.
9. ALL JOINTS MUST BE EXTERNALLY E128 CORROSION PROTECTED.
10. ALL JOINTS MUST BE DONE BY APPROVED AND CERTIFIED SUBCONTRACTOR A CERTIFICATE OF COMPLIANCE SHALL BE REQUIRED.
11. ALL PIPES TO BE DISINFECTED BEFORE COMMISSIONING.
12. ALL STEEL PIPES MUST BE CATHODIC PROTECTED AND IN LINE WITH THE JOHANNESBURG WATER SPECIFICATIONS.
13. ALL CHAMBERS TO BE REINFORCED WITH CONCRETE OF GRADE 25MPa.
14. ALL CHAMBERS TO HAVE ADEQUATE ACCESS POINTS AND APPROPRIATE STEPS.
15. CONCRETE COVERS SHALL BE USED INSTEAD OF STEEL COVERS.
16. ALL CHAMBERS TO BE CONSTRUCTED STRICTLY AS PER THE ENGINEER'S DRAWINGS.
17. ALL ISOLATION VALVES SHALL COMPLY WITH THE FOLLOWING SPECIFICATIONS:
 - WEDGE GATE VALVES (VOSA)
 - DUCTILE BODY AND COVER
 - GUN-METAL TRIMMED
 - GEARBOX OPERATED
 - NON-RISING SPINDLE
 - ANTICLOCKWISE CLOSING
 - MANUFACTURED TO SANS 664 WATER WORKS SPECIFICATIONS
18. * ALL VALVES, 300mm DIAMETER AND UPWARDS, MUST BE MULTI-STAGE OPEN SPUR GEAR DRIVEN WITH 6:1 MINIMUM GEAR RATIO, HAVING OPERATING SPINDLES ON THE INPUT SPINDLES AND AT A STAGE WHERE THE VALVE CAN BE STROKED WITHOUT EXCEEDING THE MAXIMUM INPUT TORQUE IF NO DIFFERENTIAL PRESSURE IS APPLIED TO THE VALVE.



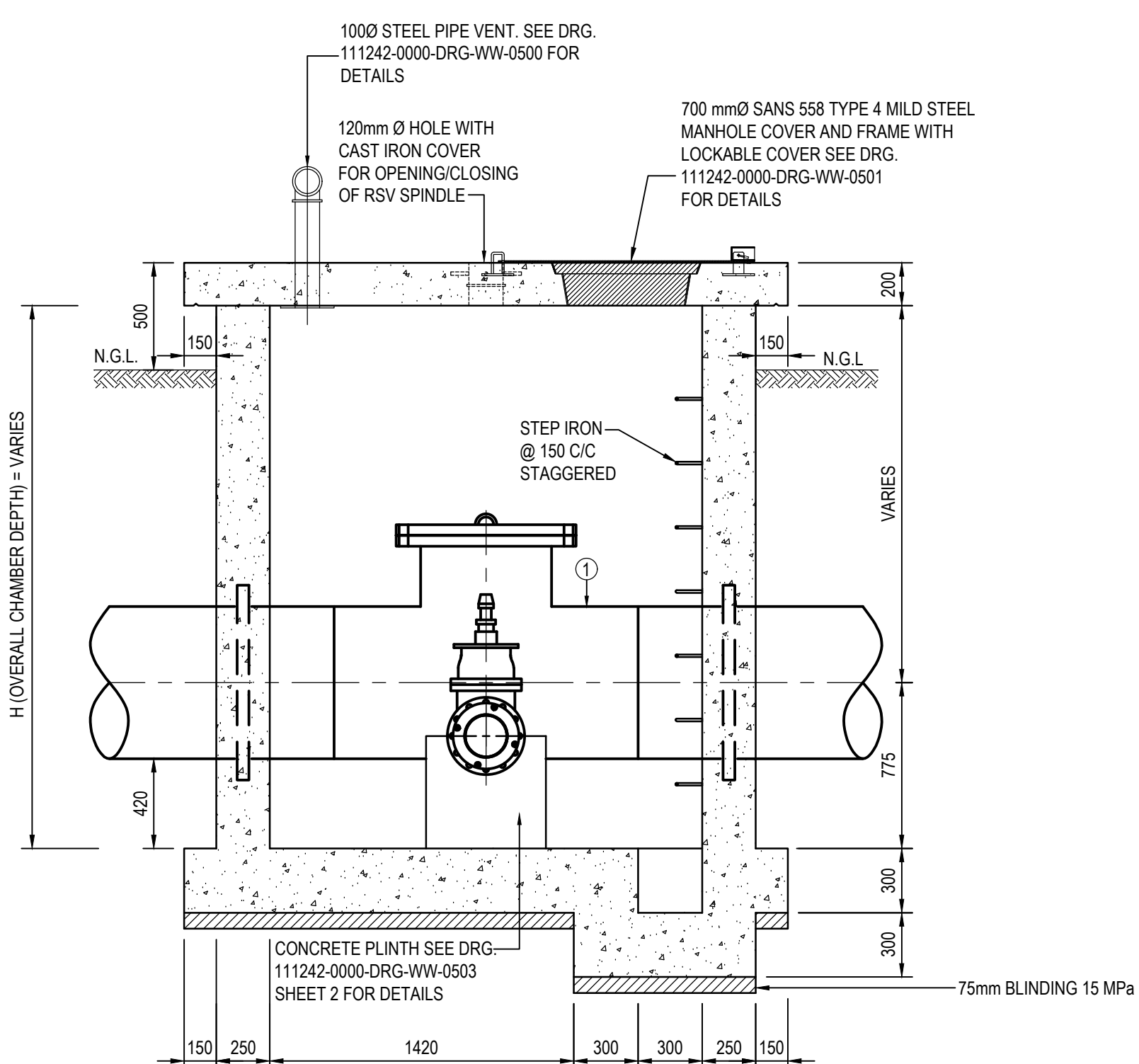
PLAN: SCOUR VALVE CHAMBER
SCALE 1:25



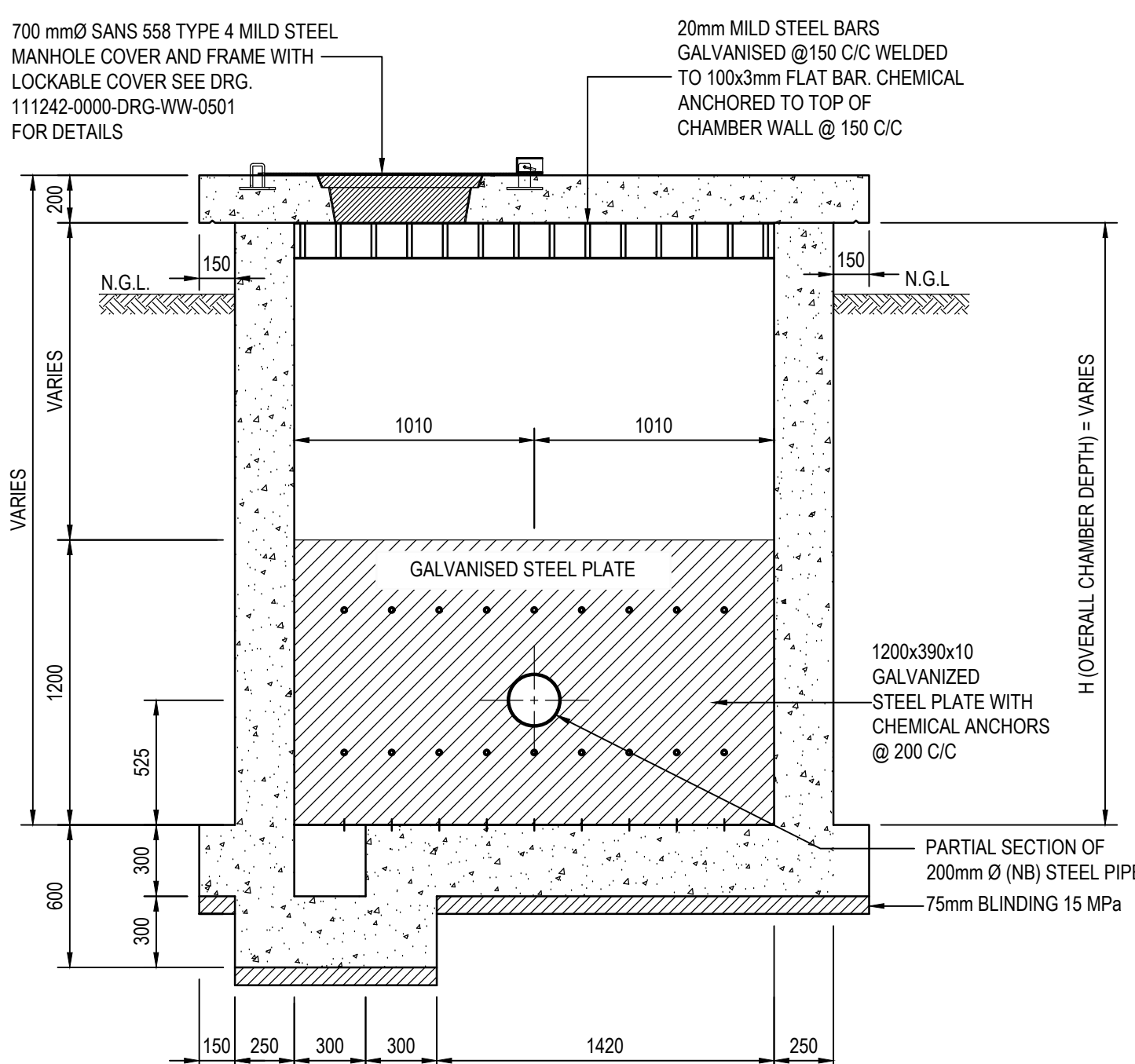
ROOF PLAN: SCOUR VALVE CHAMBER
SCALE 1:25



SECTION A
1:25



SECTION B
1:25



SECTION C
1:25

PIPE SCHEDULE OF SCOUR VALVE ON STEEL PIPELINE

ITEM No.	QTY	DESCRIPTION	PRESSURE RATING	WALL THICKNESS	PROTECTION		FLANGE DRILLING	DIMENSIONS (mm)
					LINING	COATING		
①	1	700mm Ø x 200mm Ø (NB) FLANGED SCOUR TEE	16 BAR	8.0mm	SINGLE COAT SOLVENT FREE LIQUID EPOXY	RIGID POLYURETHANE	SANS 1123 T16003	
		700 mm Ø (NB) x 4800mm DOUBLE PUDDLE PIPE WITH CP CONNECTION POINT						
		600mm Ø x 200mm Ø (NB) FLANGED SCOUR TEE						
		600 mm Ø (NB) x 4800mm DOUBLE PUDDLE PIPE WITH CP CONNECTION POINT						
②	1	610 mm Ø x 610 mm Ø ACCESS PIPE	16 BAR	8.0mm	SINGLE COAT SOLVENT FREE LIQUID EPOXY	RIGID POLYURETHANE	SANS 1123 T16003	
		200 mm Ø WEDGE GATE VALVE (MECH)						
		200mmØ (NB) SPOOL PIPE FLANGED BOTH ENDS, 614mm LONG						
		200mmØ (NB) STEEL PUDDLE PIPE, 1100mm LONG WITH CP CONNECTION POINT						

STEEL FLANGES TO: SANS 1123

PIPE SIZE	ITEM DESCRIPTION	PRESSURE RATING	FLANGE DIAMETER	THICKNESS	PCD	No. OF BOLTS
200mmØ	FLANGE	16 BAR	340mm	22mm	255mm	12 x M20
500mmØ	FLANGE	16 BAR	715mm	40mm	650mm	16 x M30
600mmØ	FLANGE	16 BAR	840mm	50mm	770mm	20 x M30
700mmØ	FLANGE	16 BAR	910mm	55mm	840mm	24 x M30

CONSULTING ENGINEERS

ZUTARI
IMPACT. ENGINEERED.

OXFORD CORNER
JELICHO AVENUE
ROSEBANK, JOHANNESBURG
SOUTH AFRICA

TEL: +27 11 214 4500

CLIENT
17 HARRISON STREET
MARSHALLTOWN
2107

DESIGNED	T. SHABALALA	AUGUST 2021
DRAWN	T. SHABALALA	AUGUST 2021
CHECKED	M. LUSUNZI	AUGUST 2021
APPROVED BY:	C. KAN	AUGUST 2021
ECOSA REG. No.		
CHECKED BY:		
ECOSA REG. No.		



17 HARRISON STREET
MARSHALLTOWN
2107

TEL: (011) 688-1400
FAX: (011) 688-1529

Joburg

HALFWAY HOUSE WATER UPGRADE

TYPICAL DETAILS OF SCOUR VALVE CHAMBER
SHEET 1 OF 2

APPROVAL BY JW DEPOT

SCALE

AMENDMENTS

DRAWING No.

CHECKED

APPROVED BY:

SIGNATURE

DATE

REV:

TO

SIGNATURE

DATE

DESCRIPTION

ISSUED FOR TENDER

DATE:

10/2021

APPROVAL BY JW PLANNING

CHECKED

APPROVED BY:

SIGNATURE

DATE

FILE No.

1

2

3

4

5

6

7

8

9

10

11

12

13

14

15

16

17

18

19

20

21

22

23

24

25

26

27

28

29

30