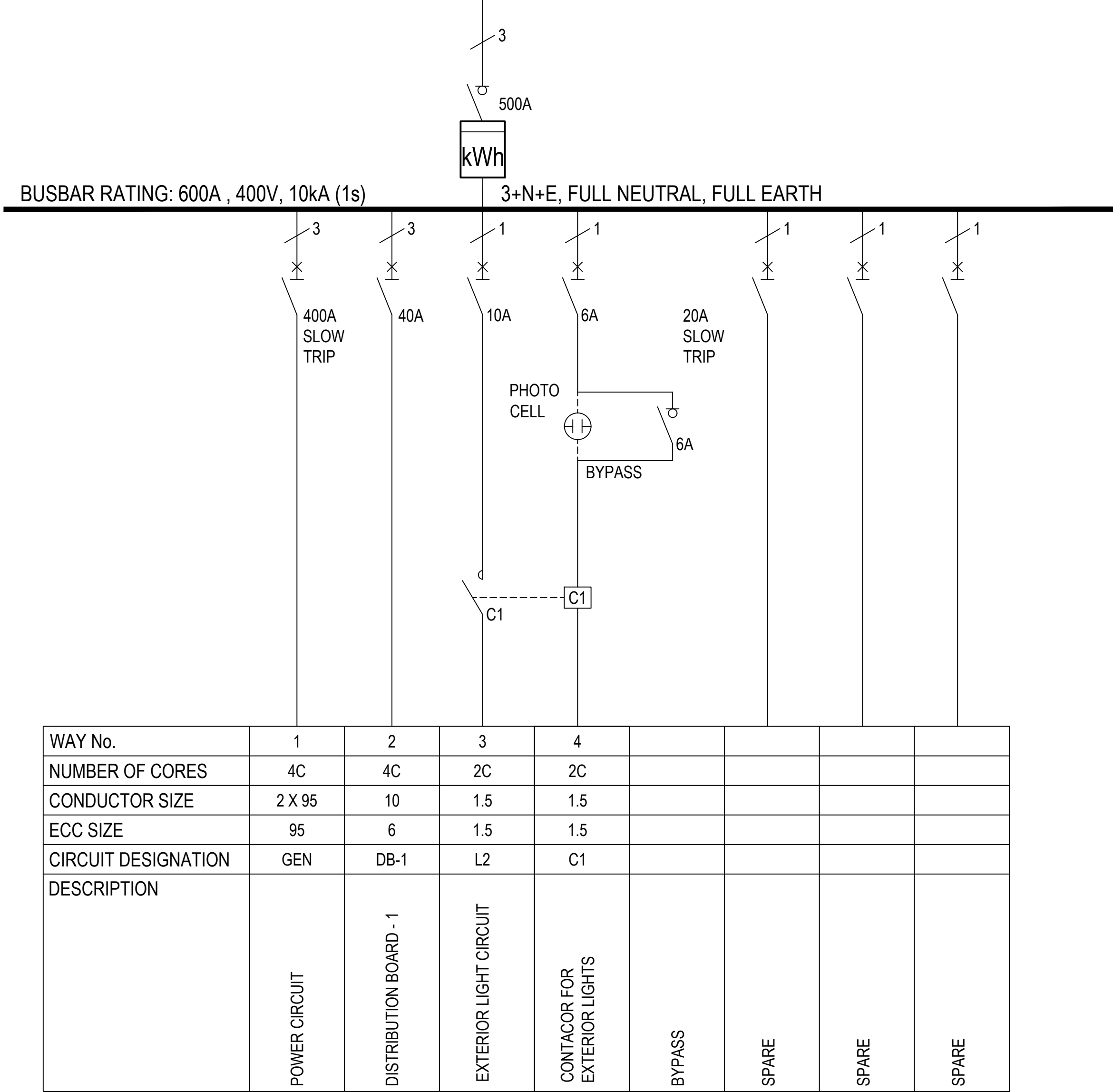


DB NUMBER	DK-1
SUPPLY FROM	MINISUBSTATION
UPSTREAM C/B SIZE	500A
CABLE SIZE	2 X 4C x 95mm² Cu PVC/PVC/SWA/PVC
EARTH CABLE SIZE	95mm² BCEW



- Notes**
- SEE DRAWING 111229-060-DR-EL-000 FC
 - REFER TO PROJECT SPECIFICATION FOR METER REQUIREMENTS.
 - INSTALLATION TO BE IN ACCORDANCE WITH SANS 10142-1 & 10142-2.
 - PHOTOCELL SENSOR LOCATED OUTSIDE THE BUILDING, WIRED TO EXTERNAL PHOTOCELL RELAY.
 - FUSED SWITCH DISCONNECTORS TO CONTROL THE MONITORS.

WAY No.	1	2	3	4				
NUMBER OF CORES	4C	4C	2C	2C				
CONDUCTOR SIZE	2 X 95	10	1.5	1.5				
ECC SIZE	95	6	1.5	1.5				
CIRCUIT DESIGNATION	GEN	DB-1	L2	C1				
DESCRIPTION	POWER CIRCUIT	DISTRIBUTION BOARD - 1	EXTERIOR LIGHT CIRCUIT	CONTACTOR FOR EXTERIOR LIGHTS	BYPASS	SPARE	SPARE	SPARE

DISTRIBUTION BOARD SPECIFICATION													
METHOD OF INSTALLATION		ACCESS REQUIREMENTS		CONSTRUCTION DATA		COMPARTMENTS		CABLE ENTRY		FINAL FINISH		ELECTRICAL DATA	
FLOOR STANDING		OPEN CONSTRUCTION		MILD STEEL 1,6mm		INCOMER SECTION		TOP		EPOXY POWDER COATED	YES	MAIN BUSBAR RATING	DWG 3 POLE 10kA
WALL MOUNTED		DOORS	●	MILD STEEL 2,0mm		NORMAL SECTION	●	BOTTOM	●	DB COLOUR	GREEN	VOLTAGE RATING	DWG 3 POLE 5kA
FLUSH		LOCKABLE DOORS	●	ELECTRO GALVANIZED		EMERGENCY SECTION		REAR		NORMAL SECTION	-	SUB BUSBAR FAULT LEVEL	DWG 1 POLE 5kA
PEDESTAL MOUNTED		FRONT ACCESS	●	STAINLESS STEEL		UPS SECTION		SIDE		EMERGENCY SECTION	-	CONTROL VOLTAGE	-
KIOSK	●	REAR ACCESS		3CR12	●	TABULAR CONSTRUCTION		NEUTRAL / EARTH		UPS SECTION	-	FREQUENCY	50Hz
ARCHITRAVE		REMOVABLE GLAND PLATES	●	FIBRE GLASS		METERING / INDICATION	●	FULL NEUTRAL	●			SURGE ARRESTOR RATING	-
OVER TRENCH		DOOR INTERLOCK		IP65	●	CONTROL TRANSFORMER		HALF NEUTRAL				POWER FACTOR CORRECTION	-
SURFACE								EARTH BAR	●				
								EARTH STUD					
								INSULATED EARTH					

CONSULTING ENGINEERS

ZUTARI

IMPACT. ENGINEERED.

32A JELlicoe AVENUE
OXFORD CORNER
ROSEBANK
SOUTH AFRICA

TEL: +27 11 214 4500

CLIENT

17 HARRISON STREET
MARSHALLTOWN
2107

DESIGNED

J.MUTALE

29.09.21

DRAWN

J.MUTALE

29.09.21

CHECKED

L.ESTERHUIZEN

29.09.21

APPROVED BY:

L.ESTERHUIZEN

28.05.21

ECSA REG. No.

CHECKED BY:

SIGNATURE

DATE

ECSA REG. No.

SIGNATURE

DATE

Johannesburg Water

17 HARRISON STREET
MARSHALLTOWN
2107

TEL: (011) 688-1400
FAX: (011) 688-1529

Joburg

HALFWAY HOUSE SUPPLY BULK WATER PIPELINE
ELECTRICAL - DISTRIBUTION KIOSK -1

APPROVAL BY JW DEPOT

SCALE

AMENDMENTS

CHECKED

N.T.S

REV:

DESCRIPTION

DATE:

APPROVED BY:

T0

FOR TENDER

28.09.2021

SIGNATURE

DATE

APPROVAL BY JW PLANNING

CHECKED

APPROVED BY:

SIGNATURE

DATE

DRAWING No.

111242 - 0000-DRG-EL-4101 - T0

PROJECT No.

DRAWING No.

REV.

A1

SHEET

01

OF

01

ORIGINAL PAGE SIZE

FILE No.

EI 13078