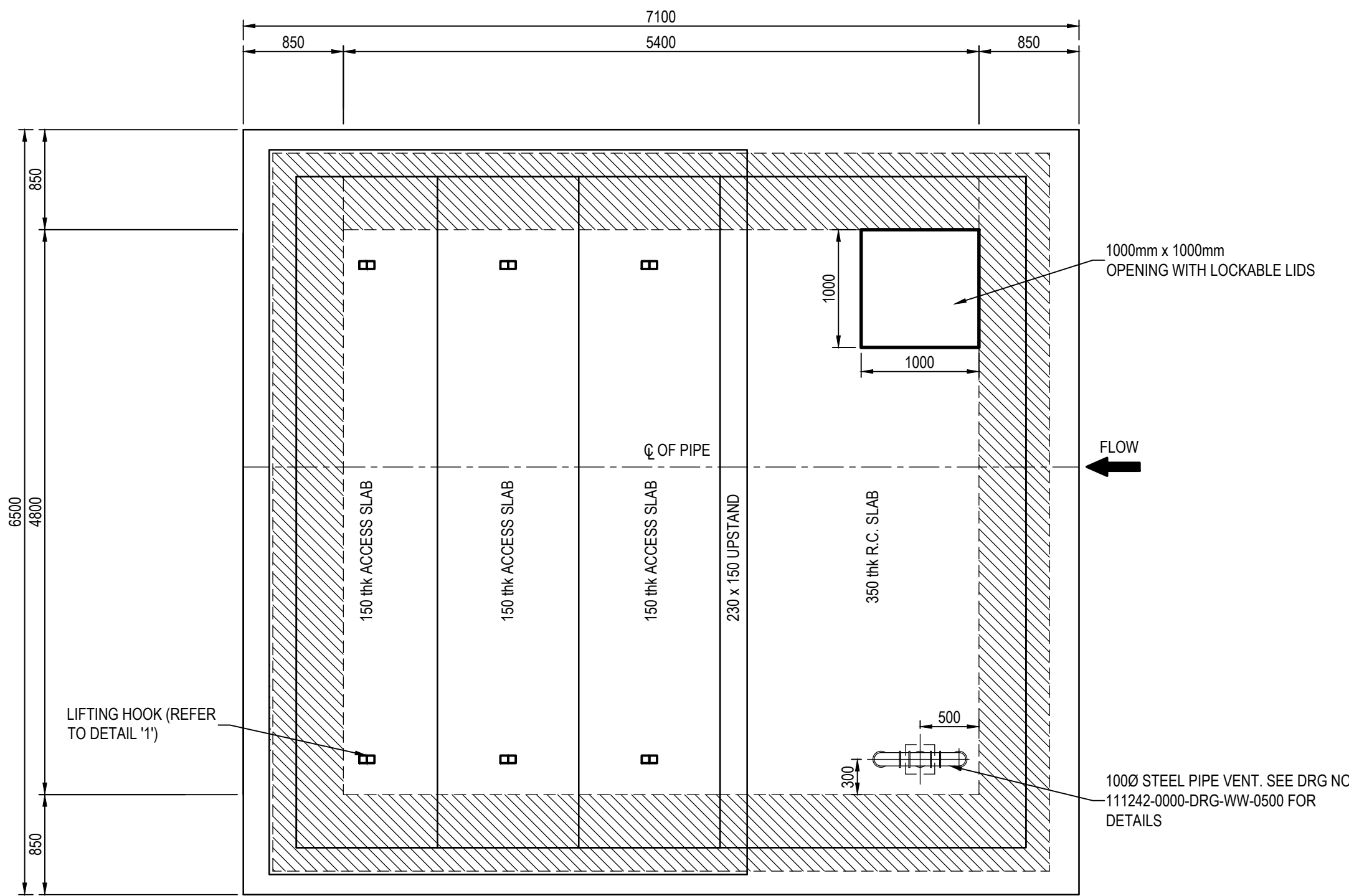
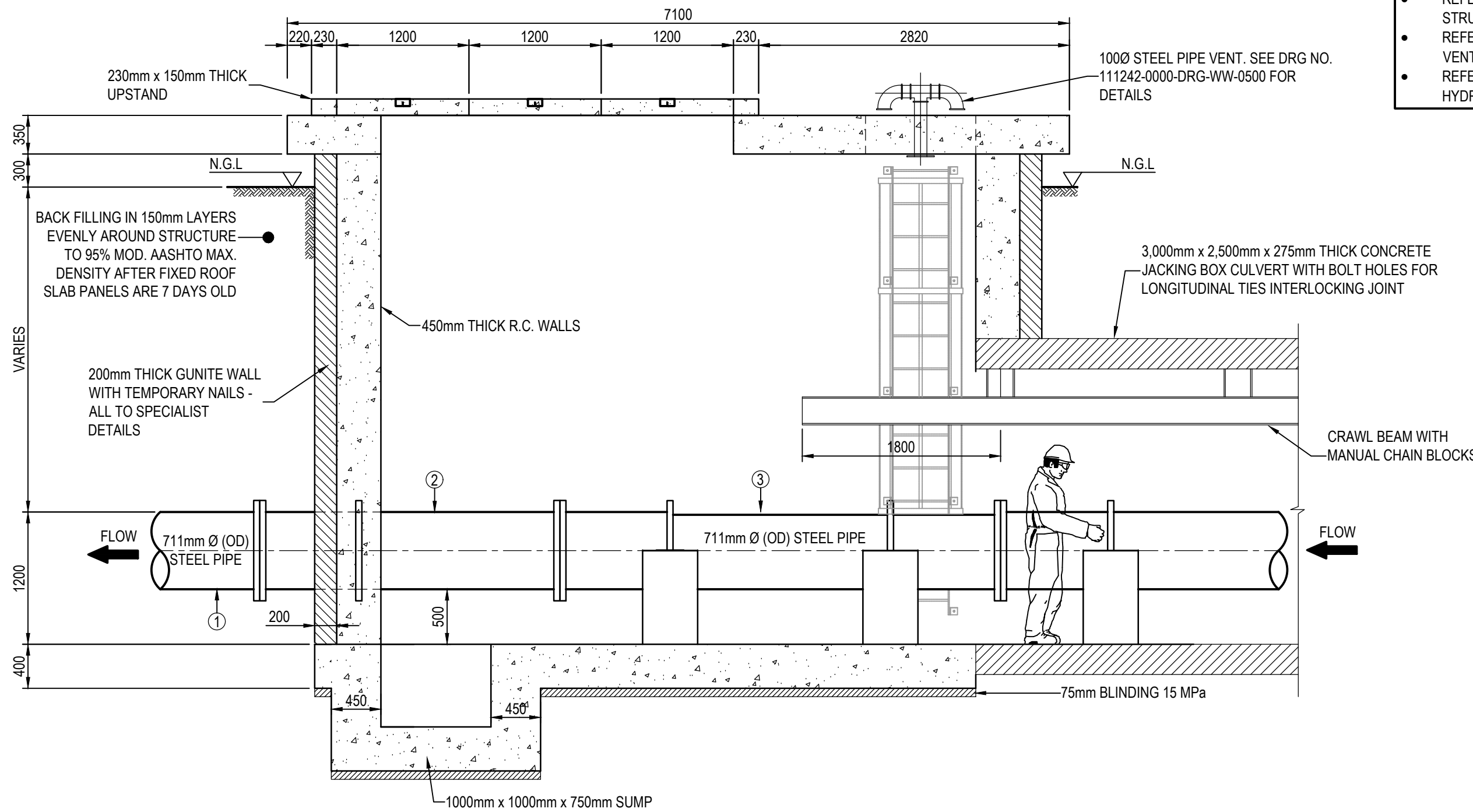


PLAN: ACCESS CHAMBER 2
SCALE 1:40

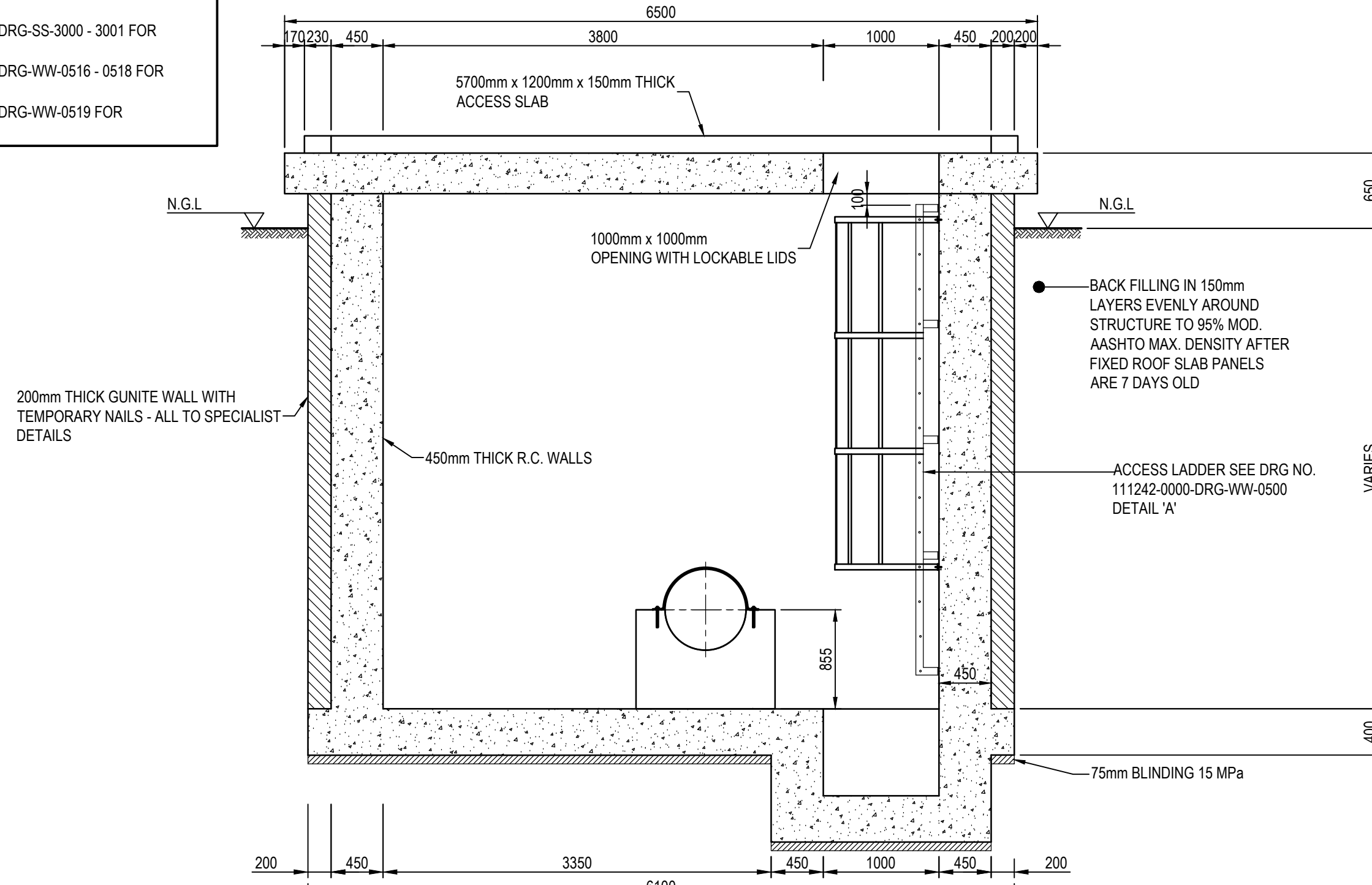


ROOF PLAN: ACCESS CHAMBER 2
SCALE 1:40

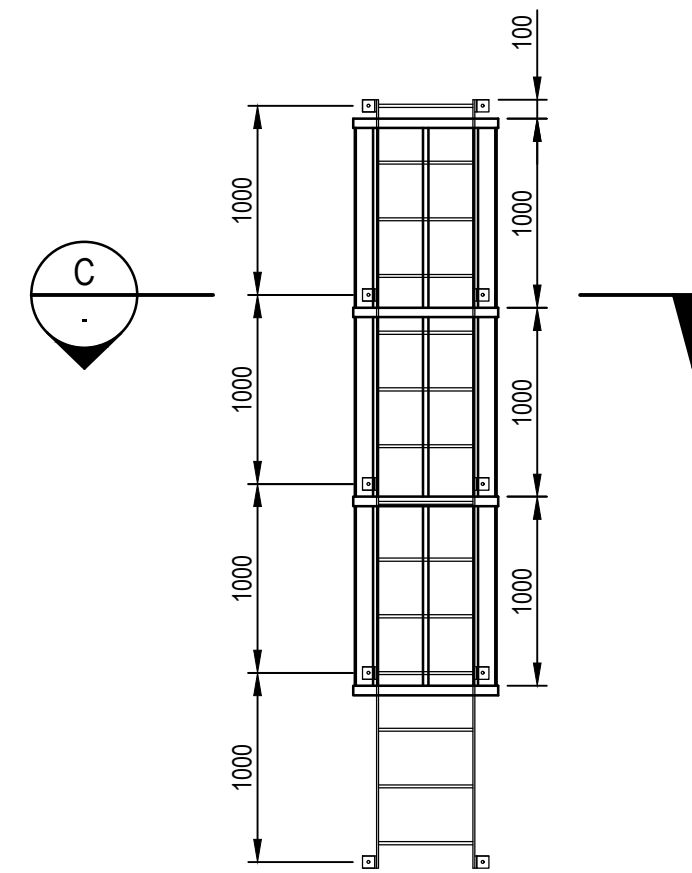
NOTE
THIS DRAWING MUST BE READ IN CONJUNCTION WITH THE FOLLOWING DRAWINGS:
• REFER TO DWG NO. 111242-0000-DRG-GS-3000 - 3001 FOR STRUCTURAL DETAILS.
• REFER TO DWG NO. 111242-0000-DRG-WW-0516 - 0518 FOR VENTILATION DETAILS.
• REFER TO DWG NO. 111242-0000-DRG-WW-0519 FOR HYDROMECHANICAL DETAILS.



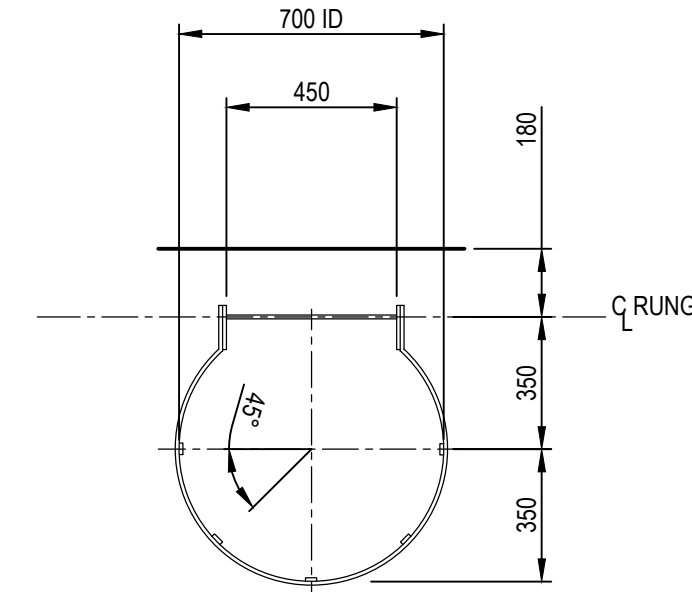
SECTION A
SCALE 1:40



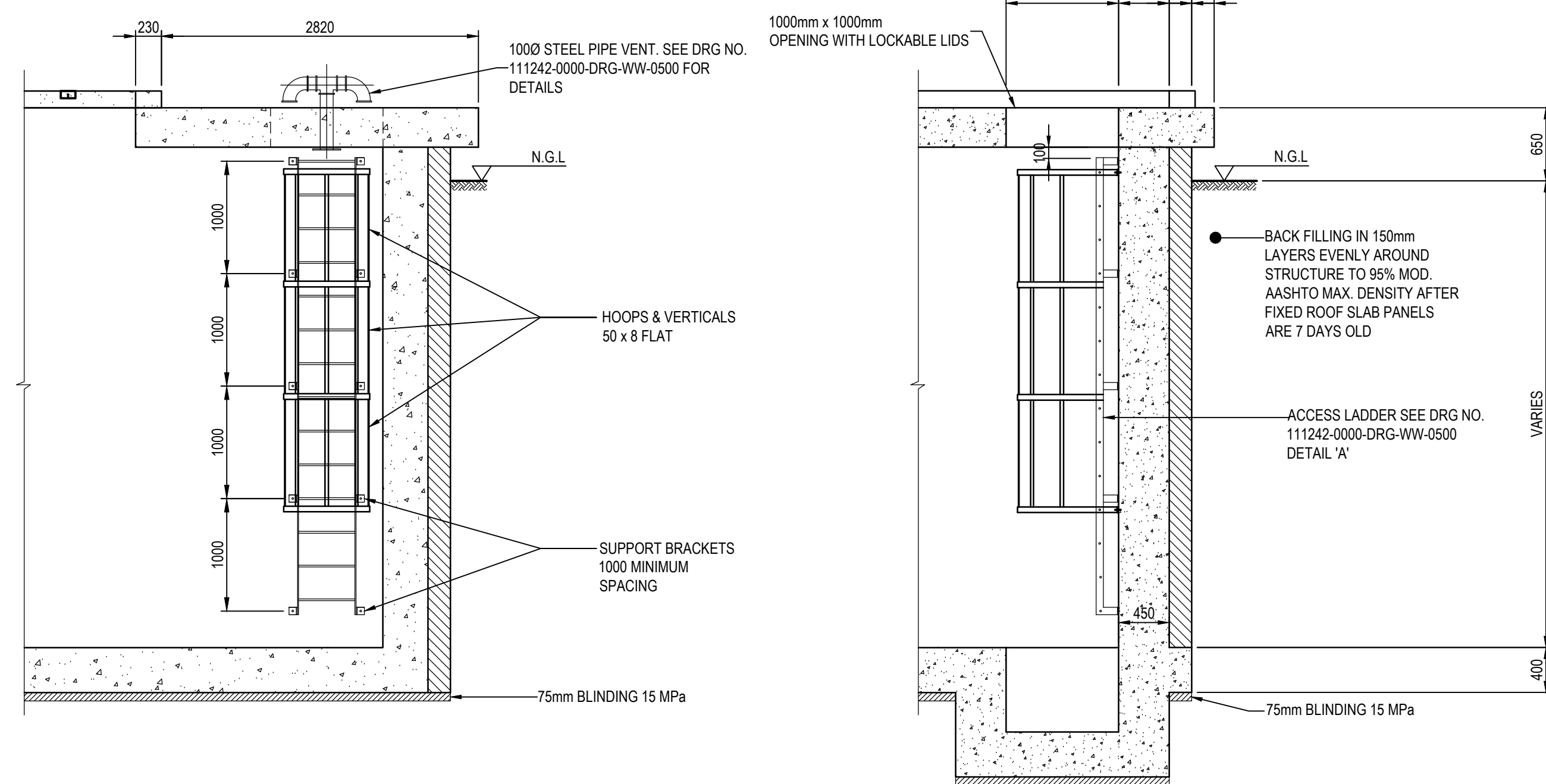
SECTION B
SCALE 1:40



ACCESS LADDER
SCALE 1:40



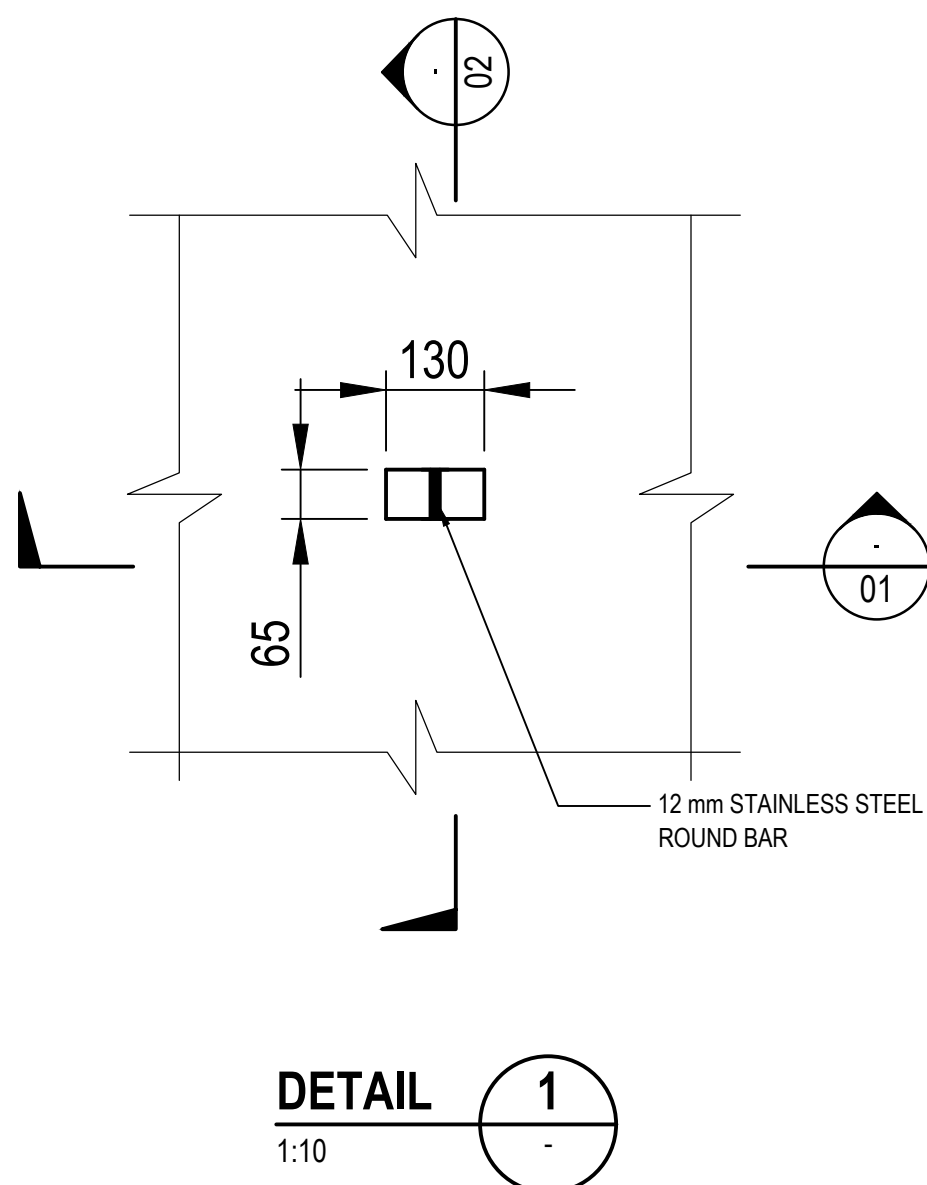
SECTION C
SCALE 1:20



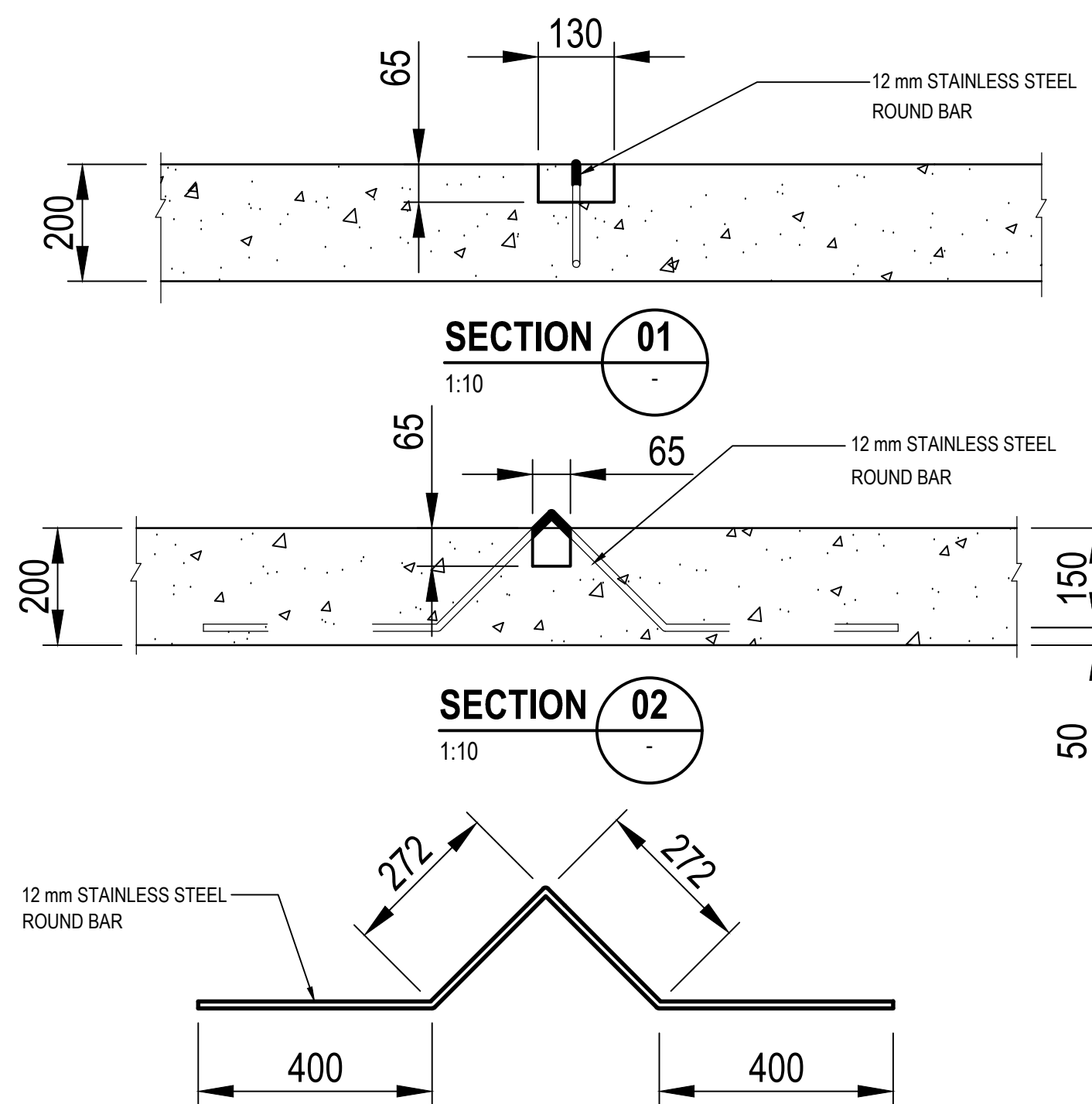
FRONT ELEVATION

SIDE ELEVATION

ACCESS LADDER DETAILS
SCALE 1:40



DETAIL 1
SCALE 1:10



LIFTING HOOK
SCALE 1:10

NOTES

- RE-INFORCEMENT STEEL SHALL BE MINIMUM OF 50mm CLEAR OF PUDDLE PIPE AND FLANGES
- ALL FLANGES TO BE DRILLED OFF-CENTRE TO SANS 1123 TABLE 1600/3 OR 2500/3 AS SPECIFIED IN SCHEDULE OF FITTINGS. PUDDLE FLANGES SIMILAR TO SANS 1123 TABLE 1600/3 OR 2500/3, AS SPECIFIED, BUT UNDRILLED AND SHOP FITTED AND COATED. CONNECTING FLANGE HOLES IN OPPOSITE FLANGES MUST BE IN LINE.
- ALL STEELWORK TO BE FINISHED ACCORDING TO PROJECT SPECIFICATIONS.
- ALL VALVES ACCORDING TO PROJECT SPECIFICATIONS.
- ALL SPECIALS ACCORDING TO PROJECT SPECIFICATIONS.
- ALL JOINTING BOLTS AND NUTS TO BE HOT-DIP GALVANISED.
- THE QUANTITIES IN THE PIPE SPECIAL SCHEDULES ARE FOR ONE CHAMBER ONLY.
- A COMPLETE SET OF DETAILED SHOP DRAWINGS OF ALL FITTINGS MUST BE SUBMITTED FOR THE ENGINEER'S APPROVAL PRIOR TO FABRICATION.
- ALL JOINTS MUST BE EXTERNALLY E128 CORROSION PROTECTED.
- ALL JOINTS MUST BE DONE BY APPROVED AND CERTIFIED SUBCONTRACTOR A CERTIFICATE OF COMPLIANCE SHALL BE REQUIRED.
- ALL PIPES TO BE DISINFECTED BEFORE COMMISSIONING.
- ALL STEEL PIPES MUST BE CATHODIC PROTECTED AND IN LINE WITH THE JOHANNESBURG WATER SPECIFICATIONS.
- ALL CHAMBERS TO BE REINFORCED WITH CONCRETE OF GRADE 25MPa
- ALL CHAMBERS TO HAVE ADEQUATE ACCESS POINTS AND APPROPRIATE STEPS.
- CONCRETE COVERS SHALL BE USED INSTEAD OF STEEL COVERS.
- ALL CHAMBERS TO BE CONSTRUCTED STRICTLY AS PER THE ENGINEERS DRAWINGS.

FITTING SCHEDULE

ITEM No.	QTY.	DESCRIPTION	PRESSURE RATING	WALL THICKNESS	PROTECTION LINING	COATING	FLANGE DRILLING	DIMENSIONS (mm)
1	1	700mm Ø x 1000mm STEEL STRAIGHT PIPE, FLANGED BOTH SIDES	16 BAR	8.0	SINGLE COAT SOLVENT FREE LIQUID EPOXY	RIGID POLYURETHANE	SANS 1123 T1600/3	1000
2	1	711mm Ø x 275mm STEEL PUDDLE PIPE, FLANGED BOTH SIDES	16 BAR	8.0	SINGLE COAT SOLVENT FREE LIQUID EPOXY	RIGID POLYURETHANE	SANS 1123 T1600/3	275
3	1	700mm Ø x 4000mm STEEL STRAIGHT PIPE, FLANGED BOTH SIDES	16 BAR	8.0	SINGLE COAT SOLVENT FREE LIQUID EPOXY	RIGID POLYURETHANE	SANS 1123 T1600/3	4000

STEEL FLANGES TO: SANS 1123

PIPE SIZE	ITEM DESCRIPTION	PRESSURE RATING	FLANGE DIAMETER	THICKNESS	PCD	No. OF BOLTS
700mm Ø	FLANGE	16 BAR	910mm	55mm	840mm	24 x M30

CONSULTING ENGINEERS

ZUTARI
IMPACT. ENGINEERED.

OXFORD CORNER
JELICHO AVENUE
ROSEBANK, JOHANNESBURG
SOUTH AFRICA
TEL: +27 11 214 4500

CLIENT
17 HARRISON STREET
MARSHALLTOWN
2107

DESIGNED: T. SHABALALA
AUGUST 2021

DRAWN: T. SIBAMBATO
AUGUST 2021

CHECKED: M. LUSUNZI
AUGUST 2021

APPROVED BY: C. KAN
AUGUST 2021

ECOSA REG. No. _____
CHECKED BY: _____
ECOSA REG. No. _____

SIGNATURE _____
DATE _____

SIGNATURE _____
DATE _____

Johannesburg Water

17 HARRISON STREET
MARSHALLTOWN
2107

TEL: (011) 688-1400
FAX: (011) 688-1529

Joburg

HALFWAY HOUSE WATER UPGRADE

DETAILS OF ACCESS CHAMBER 2

APPROVAL BY JW DEPOT

CHECKED: _____
APPROVED BY: _____
SIGNATURE _____
DATE _____

APPROVAL BY JW PLANNING

CHECKED: _____
APPROVED BY: _____
SIGNATURE _____
DATE _____

SCALE

REV: _____
TO: _____
ISSUED FOR TENDER
10/2021

AMENDMENTS

FILE No. _____

DRAWING No.

111242 - 0000-DRG-WW-0513 - T0

PROJECT No. _____
DRAWING No. _____
REV. _____

A0 SHEET 1 OF 1