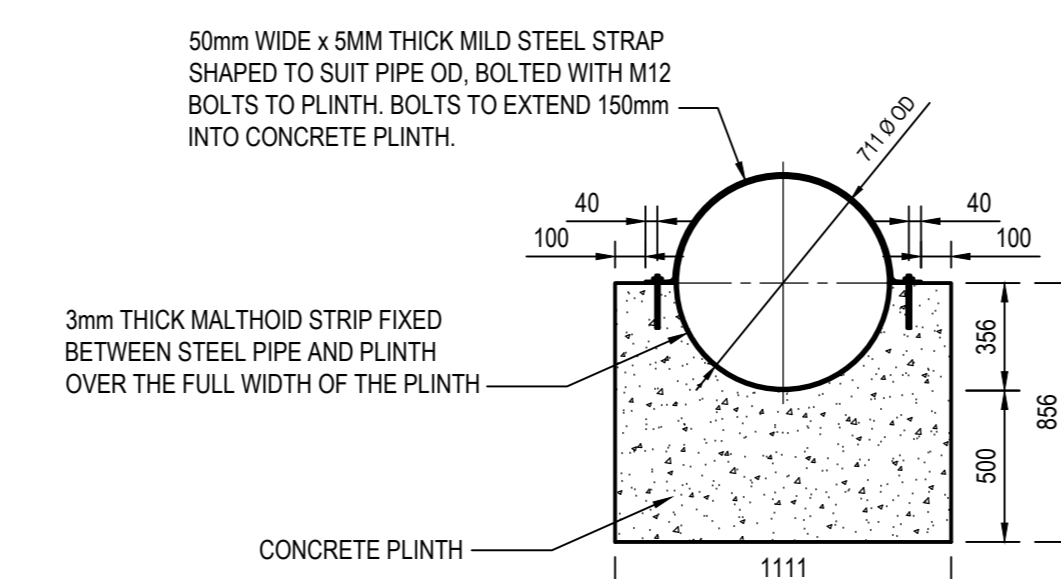
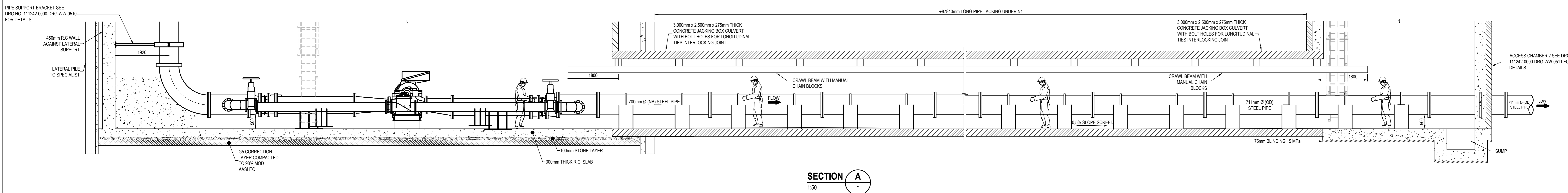
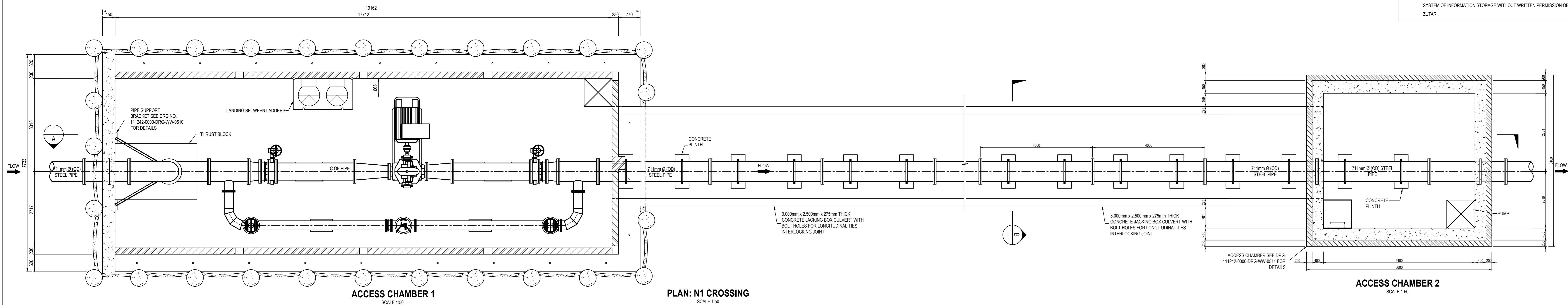
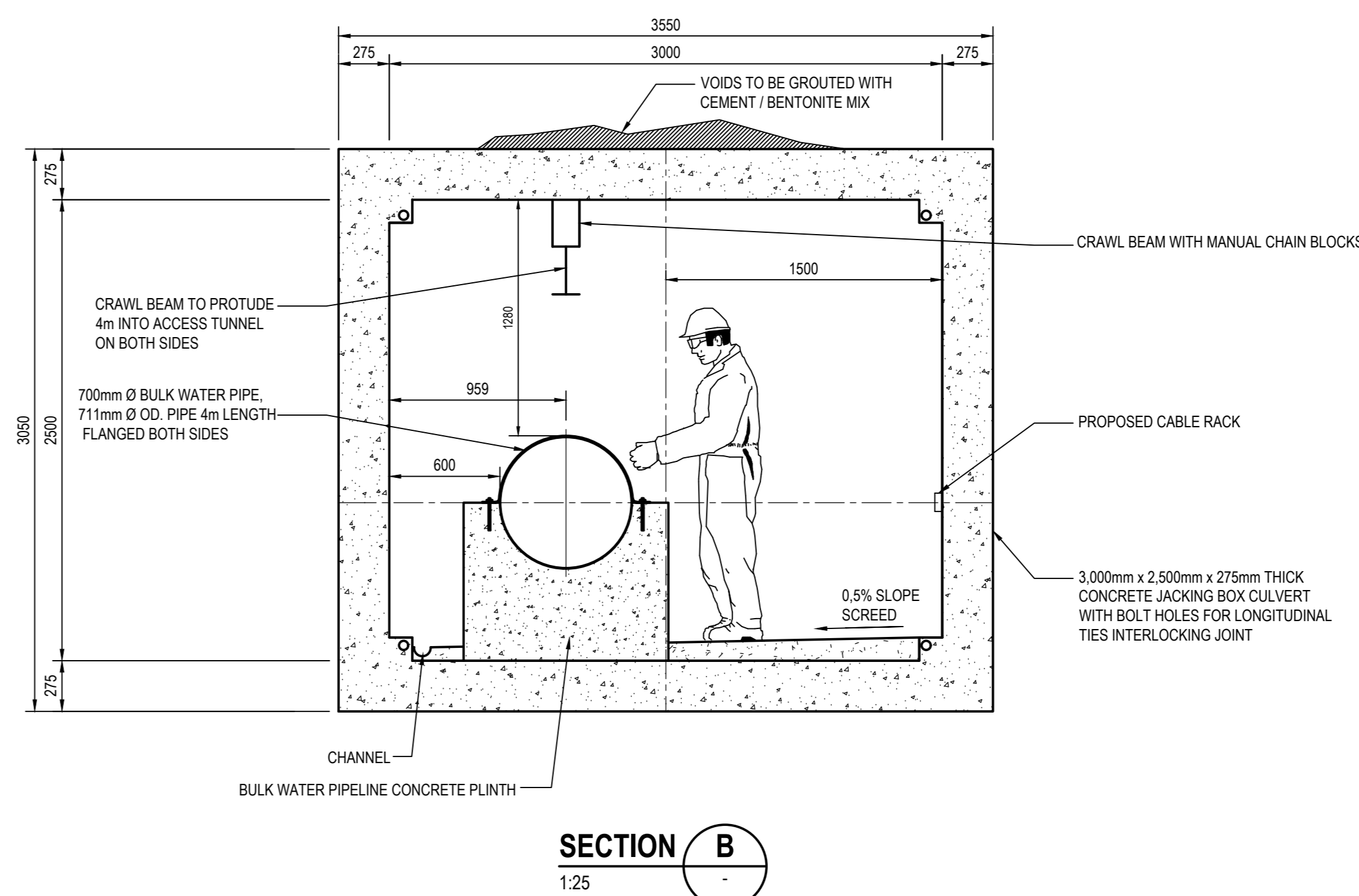


- ## GENERAL NOTES:
1. DRAWINGS MUST NOT BE SCALED.
 2. THIS DRAWING TO BE READ IN CONJUNCTION WITH THE GENERAL NOTES DRAWINGS AND ALL PROJECT SPECIFICATIONS.
 3. ACCORDING TO THE COPYRIGHT ACT (ACT No 98 OF 1978) NO PART OF THIS DOCUMENT MAY BE REPRODUCED, STORED IN A RETRIEVAL SYSTEM OR TRANSMITTED IN ANY FORM OR BY ANY MEANS WHATSOEVER INCLUDING MECHANICAL, ELECTRONIC, PHOTOCOPYING, MICROFILMING OR ANY OTHER SYSTEM OF INFORMATION STORAGE WITHOUT WRITTEN PERMISSION OF ZUTARI.



TYPICAL PIPE PLINTH
SCALE 1:25



- NOTES:**
1. LIGHTING AND ILLUMINATED PAINT DIRECTIONS TO BE ON THE WALLS IN CASE OF POWER OUTAGES.
 2. PROVISION TO BE MADE FOR HYDROPOWER FACILITY. CONFIGURATION OF FACILITY WITHIN CHAMBER STILL TO BE FINALISED WITH HYDROPOWER SPECIALIST.
 3. SUMP WITH SUBMERSIBLE PUMP TO BE PROVIDED.

[illegible]