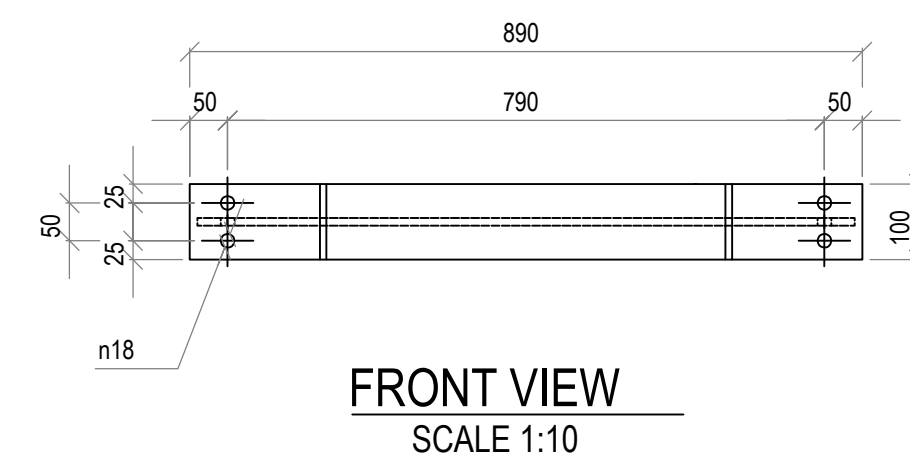
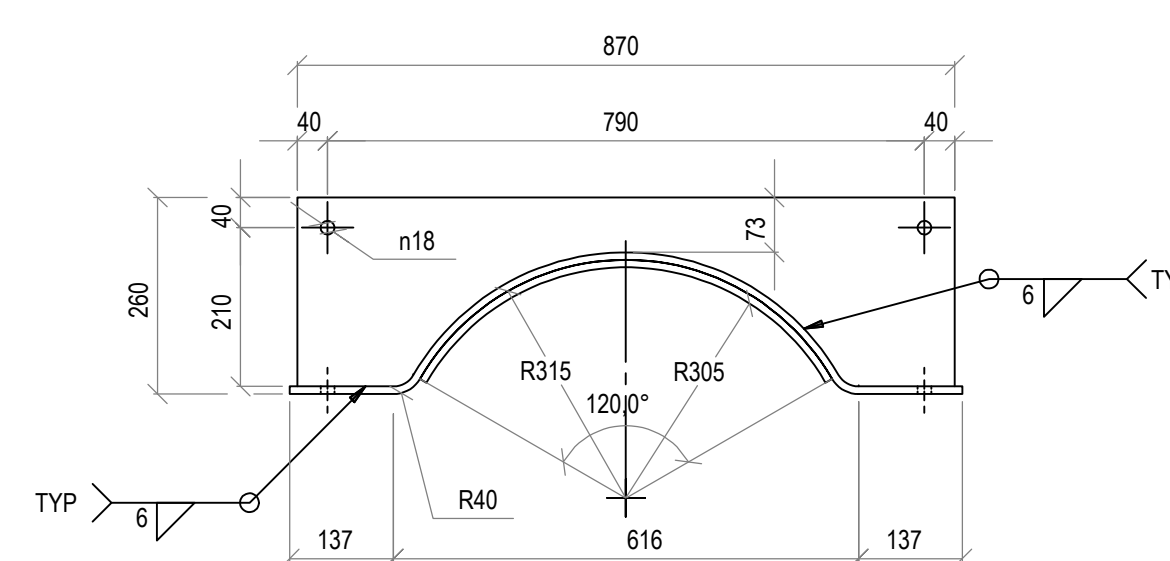
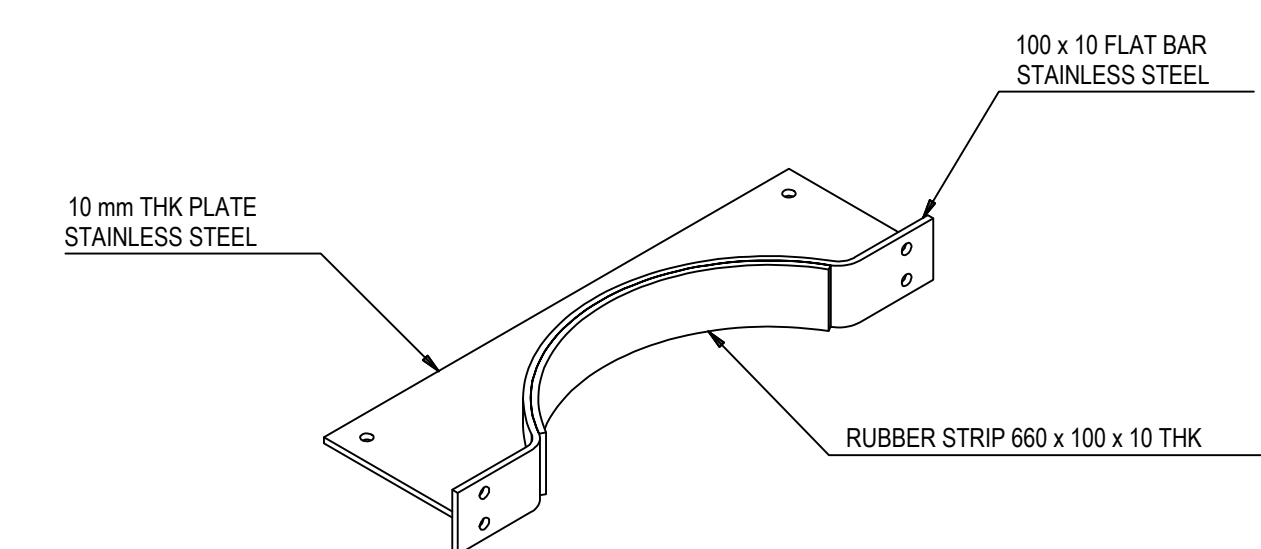
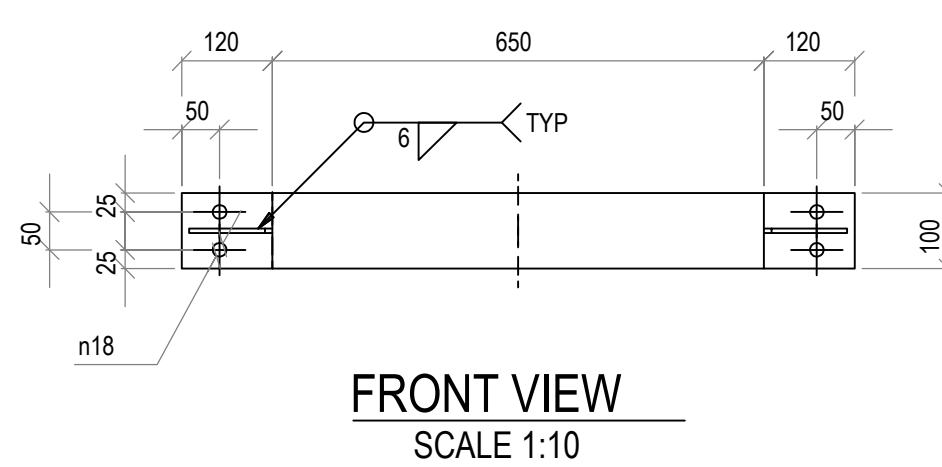
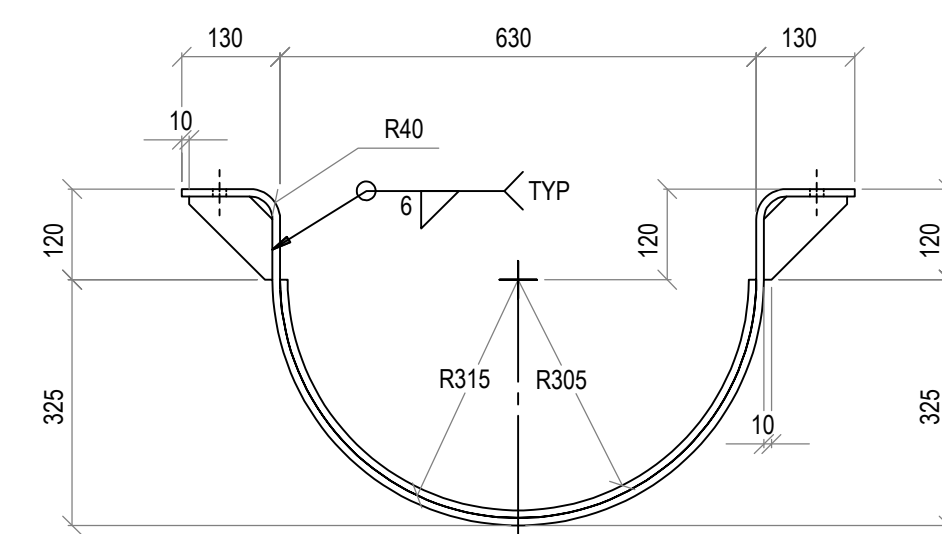


1. DRAWINGS MUST NOT BE SCALED.
2. THIS DRAWING TO BE READ IN CONJUNCTION WITH THE GENERAL NOTES
DRAWINGS AND ALL PROJECT SPECIFICATIONS.
3. ACCORDING TO THE COPYRIGHT ACT (ACT NO 98 OF 1978) NO PART OF THIS
DOCUMENT MAY BE REPRODUCED, STORED IN A RETRIEVAL SYSTEM OR
TRANSMITTED IN ANY FORM OR BY ANY MEANS WHATSOEVER INCLUDING
MECHANICAL/ELECTRONIC, PHOTOCOPYING, MICROFILMING OR ANY OTHER
SYSTEM OF INFORMATION STORAGE WITHOUT WRITTEN PERMISSION OF
ZUTARI.

1. DRAWINGS ARE INDICATIVE ONLY - CONTRACTOR TO SUBMIT FINAL SHOP DRAWINGS TO ENGINEER FOR APPROVAL PRIOR TO MANUFACTURING.
2. CONTRACTOR TO VERIFY STRUCTURAL DIMENSIONS ON SITE AND ENSURE THAT THE DIMENSIONS OF THE SUPPORT ARE CORRECT BEFORE MANUFACTURING.
3. STEEL TO BE STAINLESS STEEL, 304 OR 316, 10mm THICK.
4. ALL WELDS SHALL BE CONTINUOUS AND EVEN, WITH NO GAPS OR CRACKS, WELDS SHALL BE FREE OF SURFACE CAVITIES, SLAG INCLUSIONS, CRACKS, PINHOLES AND UNDERCUTS. ALL SHARP EDGES, BURRS AND WELD SPATTER TO BE REMOVED.
5. WELDING FILLER MATERIAL USED TO BE OF SIMILAR STRENGTH AS PARENT MATERIAL.
6. FASTENERS TO BE COATED WITH MOLYBDENUM DISULPHIDE LUBRICANT OR NICKEL ANTI-SEIZE COMPOUND.
7. COMPLETE ASSEMBLY TO BE PICKLED AND PASSIVATED.



TEL: (011) 688-1400
FAX: (011) 688-1529

HALFWAY HOUSE WATER UPGRADE

TYPICAL DETAIL - DN 700 SUPPORT BRACKET DETAILS

APPROVAL BY JW DEPOT			SCALE	AMENDMENTS			DRAWING No.
CHECKED			REV:	DESCRIPTION	DATE:		
APPROVED BY:			T0	ISSUED FOR TENDER	10/2021		
SIGNATURE	DATE						
APPROVAL BY JW PLANNING							
CHECKED							
APPROVED BY:							
SIGNATURE	DATE						

PROJECT No. 111242 - **DRAWING No.** 0000-DRG-WW-0510 - **REV.** T0

A0 SHEET **1** OF **1**

ORIGINAL PAGE SIZE

FILE No. _____