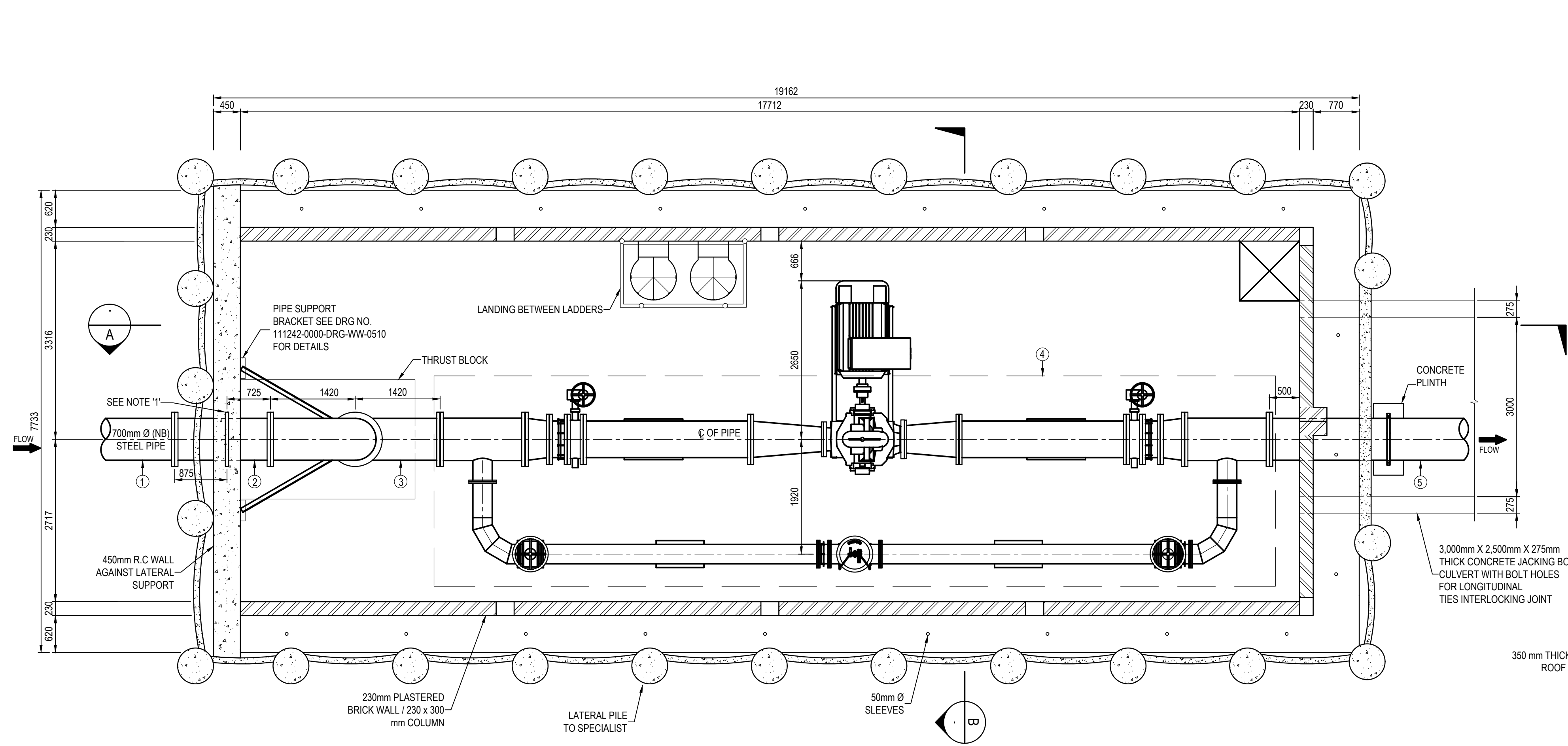


GENERAL NOTES:

- DRAWINGS MUST NOT BE SCALED.
- THIS DRAWING TO BE READ IN CONJUNCTION WITH THE GENERAL NOTES
- DRAWINGS AND ALL PROJECT SPECIFICATIONS
- ACCORDING TO THE COPYRIGHT ACT (ACT No 98 OF 1978) NO PART OF THIS DOCUMENT MAY BE REPRODUCED, STORED IN A RETRIEVAL SYSTEM OR TRANSMITTED IN ANY FORM OR BY ANY MEANS WHATSOEVER INCLUDING MECHANICAL, ELECTRONIC, PHOTOCOPYING, MICROFILMING OR ANY OTHER SYSTEM OF INFORMATION STORAGE WITHOUT WRITTEN PERMISSION OF ZUTARI.

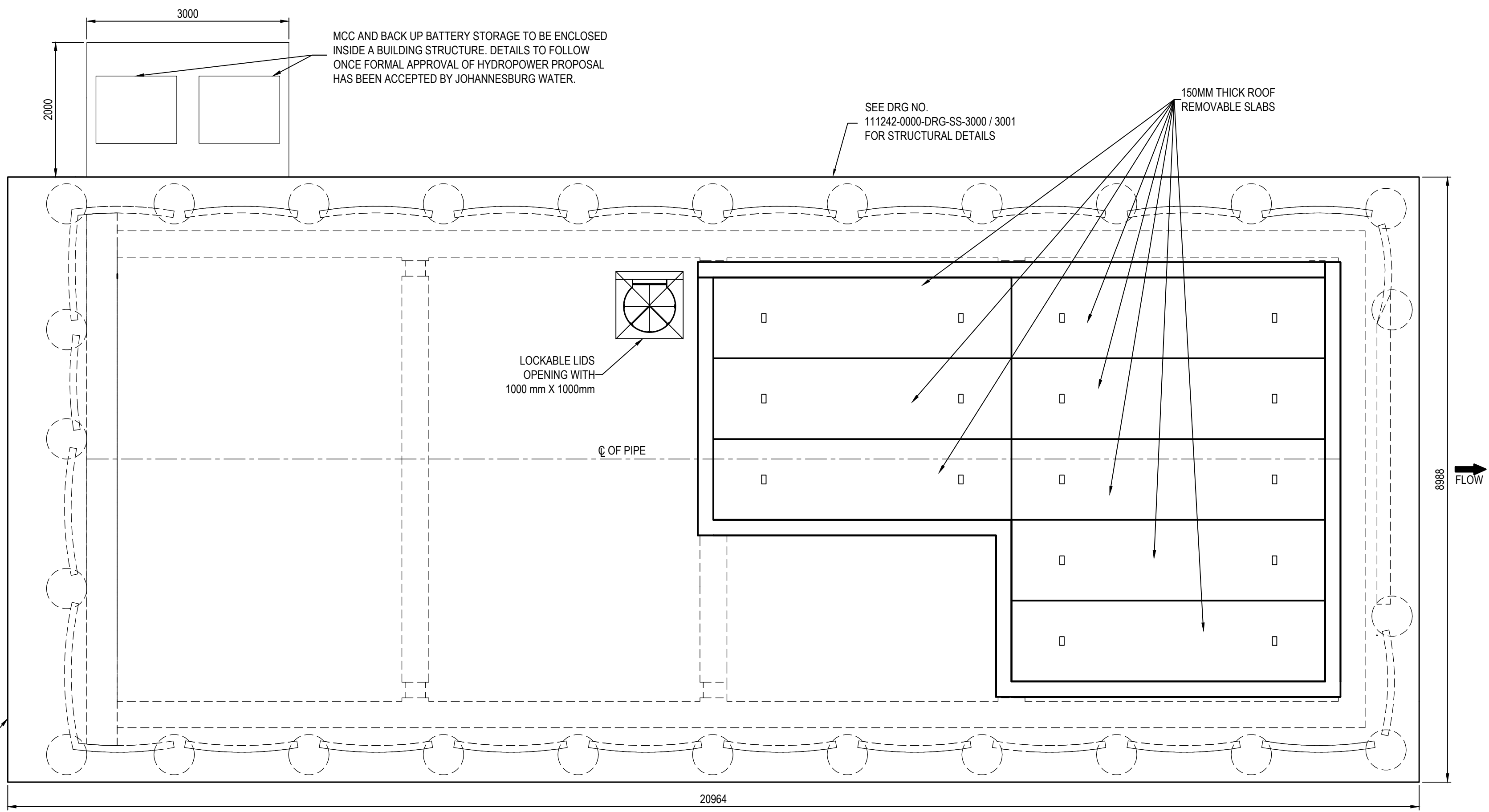
NOTES:

- REINFORCEMENT STEEL SHALL BE MINIMUM OF 50mm CLEAR OF PUDDLE PIPE AND FLANGES.
- ALL FLANGES TO BE DRILLED OFF-CENTRE TO SANS 1123 TABLE 1600/3 OR 2500/3 AS SPECIFIED IN SCHEDULE OF FITTINGS. PUDDLE FLANGES SIMILAR TO SANS 1123 TABLE 1600/3 OR 2500/3, AS SPECIFIED, BUT UNDRILLED AND SHOP FITTED AND COATED. CONNECTING FLANGE HOLES IN OPPOSITE FLANGES MUST BE IN LINE.
- ALL STEELWORK TO BE FINISHED ACCORDING TO PROJECT SPECIFICATIONS.
- ALL VALVES ACCORDING TO PROJECT SPECIFICATIONS.
- ALL SPECIALS ACCORDING TO PROJECT SPECIFICATIONS.
- ALL JOINTING BOLTS AND NUTS TO BE HOT-DIP GALVANISED.
- THE QUANTITIES IN THE PIPE SPECIAL SCHEDULE ARE FOR ONE CHAMBER ONLY.
- A COMPLETE SET OF DETAILED SHOP DRAWINGS OF ALL FITTINGS MUST BE SUBMITTED FOR THE ENGINEER'S APPROVAL PRIOR TO FABRICATION.
- ALL JOINTS MUST BE EXTERNALLY E128 CORROSION PROTECTED.
- ALL JOINTS MUST BE DONE BY APPROVED AND CERTIFIED SUBCONTRACTOR AND A CERTIFICATE OF COMPLIANCE SHALL BE REQUIRED.
- ALL PIPES TO BE DISINFECTED BEFORE COMMISSIONING.
- ALL STEEL PIPES MUST BE CATHODIC PROTECTED AND IN LINE WITH THE JOHANNESBURG WATER SPECIFICATIONS.
- ALL CHAMBERS TO BE REINFORCED WITH CONCRETE OF GRADE 25MPa.
- ALL CHAMBERS TO HAVE ADEQUATE ACCESS POINTS AND APPROPRIATE STEPS.
- ALL CHAMBERS TO BE CONSTRUCTED STRICTLY AS PER THE ENGINEERS DRAWINGS.
- LIGHTING AND ILLUMINATED PAINT DIRECTIONS TO BE ON THE WALLS IN CASE OF POWER OUTAGES.
- PROVISION TO BE MADE FOR HYDROPOWER FACILITY. CONFIGURATION OF FACILITY WITHIN CHAMBER STILL TO BE FINALISED WITH HYDROPOWER SPECIALIST.



PLAN: ACCESS CHAMBER

SCALE 1:50



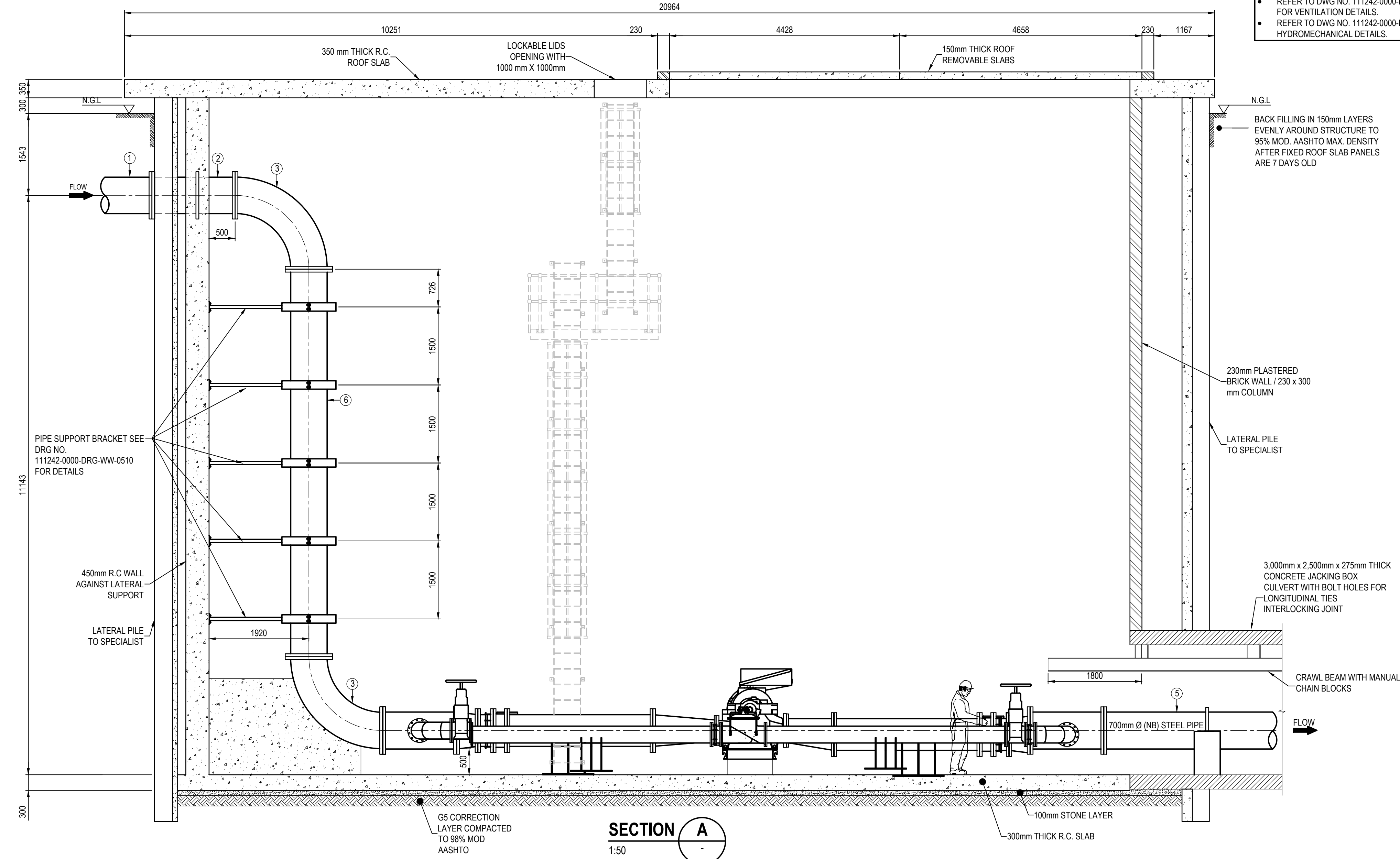
ROOF PLAN: ACCESS CHAMBER

SCALE 1:50

*NOTE

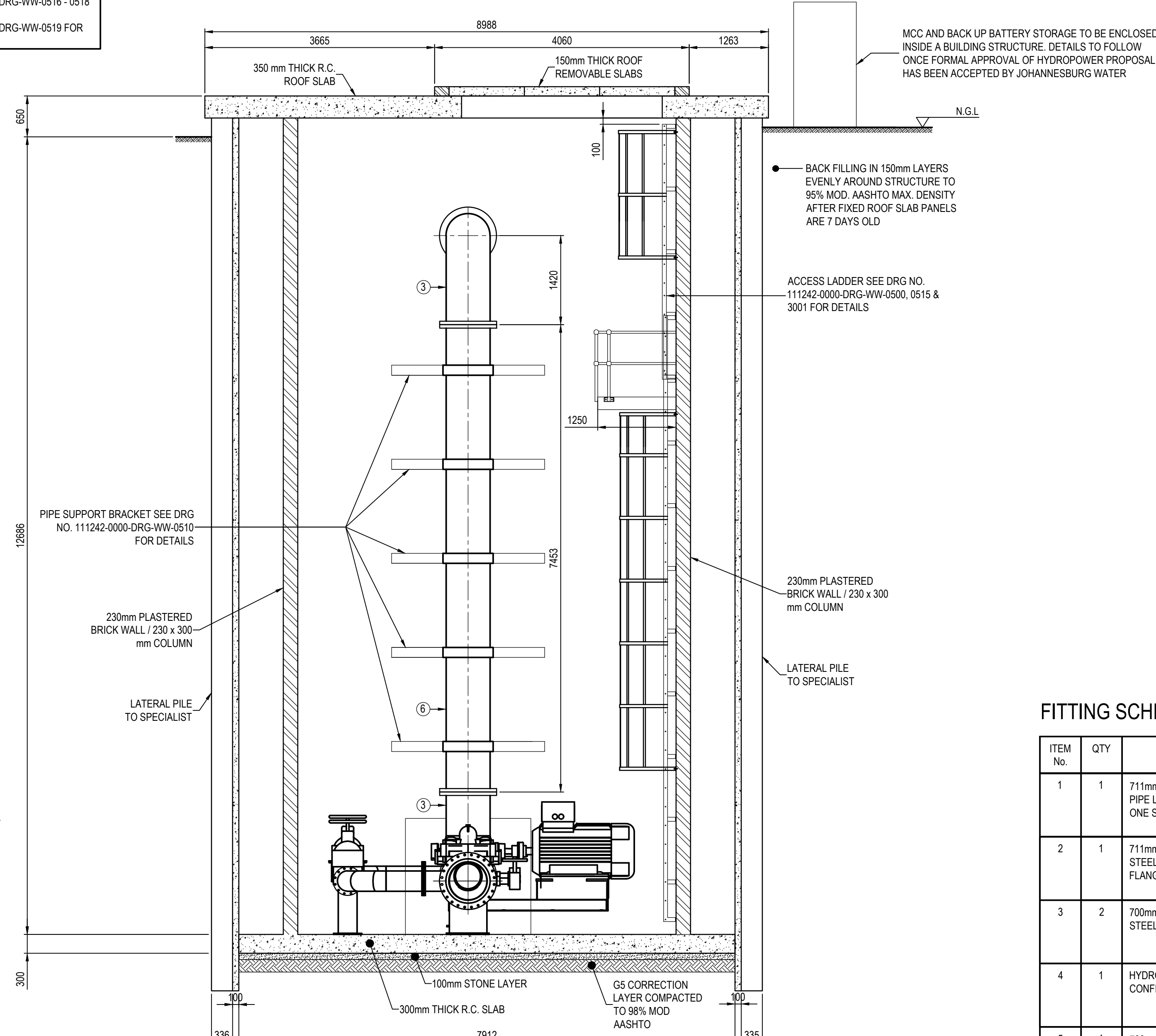
THIS DRAWING MUST BE READ IN CONJUNCTION WITH THE FOLLOWING DRAWINGS:

- REFER TO DWG NO. 111242-0000-DRG-SS-3000 - 3001 FOR STRUCTURAL DETAILS.
- REFER TO DWG NO. 111242-0000-DRG-WW-0516 - 0518 FOR VENTILATION DETAILS.
- REFER TO DWG NO. 111242-0000-DRG-WW-0519 FOR HYDROMECHANICAL DETAILS.



SECTION A

SCALE 1:50



SECTION B

SCALE 1:50

STEEL FLANGES TO: SANS 1123

PIPE SIZE	ITEM DESCRIPTION	PRESSURE RATING	FLANGE DIAMETER	THICKNESS	PCD	No. OF BOLTS
700mmØ	FLANGE	16 BAR	910mm	55mm	840mm	24 x M30

FITTING SCHEDULE

ITEM No.	QTY	DESCRIPTION	PRESSURE RATING	WALL THICKNESS	PROTECTION		FLANGE DRILLING	DIMENSIONS (mm)
					LINING	COATING		
1	1	711mm Ø INTEGRAL STRAIGHT PIPE L = 1500 mm, FLANGED ONE SIDE	16 BAR	8.0	SINGLE COAT SOLVENT FREE LIQUID EPOXY	RIGID POLYURETHANE	SANS 1123 T1600/3	1500
2	1	711mm Ø x 1500mm STEEL PUDDLE PIPE, FLANGED BOTH SIDES	16 BAR	8.0	SINGLE COAT SOLVENT FREE LIQUID EPOXY	RIGID POLYURETHANE	SANS 1123 T1600/3	1500
3	2	700mm Ø x 90° STEEL BEND	16 BAR	8.0	SINGLE COAT SOLVENT FREE LIQUID EPOXY	RIGID POLYURETHANE	SANS 1123 T1600/3	1420
4	1	HYDROPOWER CONFIGURATION FACILITY	16 BAR	-	AS SPECIFIED	AS SPECIFIED	SANS 1123 T1600/3	7453
5	1	700mm Ø x 4000 mm STEEL STRAIGHT PIPE, FLANGED BOTH SIDES	16 BAR	8.0	SINGLE COAT SOLVENT FREE LIQUID EPOXY	RIGID POLYURETHANE	SANS 1123 T1600/3	4000
6	1	700mm Ø x 7453 mm STEEL STRAIGHT PIPE, FLANGED BOTH SIDES (LENGTH TO BE CONFIRMED ON SITE)	16 BAR	8.0	SINGLE COAT SOLVENT FREE LIQUID EPOXY	RIGID POLYURETHANE	SANS 1123 T1600/3	7453

CONSULTING ENGINEERS ZUTARI IMPACT. ENGINEERED. OXFORD CORNER JELLICOE AVENUE ROSEBANK, JOHANNESBURG SOUTH AFRICA TEL: +27 11 214 4500	DESIGNED	T. SHABALALA	JANUARY 2021
	DRAWN	T. SHABALALA	JANUARY 2021
	CHECKED	M. LUSUNZI	JANUARY 2021
	APPROVED BY:	C. KAN	JANUARY 2021
CLIENT 17 HARRISON STREET MARSHALLTOWN 2107	ECSA REG. No.	SIGNATURE	DATE
	CHECKED BY:	SIGNATURE	DATE
	ECSA REG. No.	SIGNATURE	DATE
		SIGNATURE	DATE



17 HARRISON STREET
MARSHALLTOWN
2107

TEL: (011) 688-1400
FAX: (011) 688-1529



HALFWAY HOUSE WATER UPGRADE

DETAILS OF ACCESS CHAMBER 1

APPROVAL BY JW DEPOT		SCALE	AMENDMENTS		DRAWING No.
CHECKED:			REV:	DESCRIPTION	
APPROVED BY:			TO	ISSUED FOR TENDER	10/2021
SIGNATURE		DATE			
APPROVAL BY JW PLANNING					
CHECKED:					
APPROVED BY:					
SIGNATURE		DATE			

111242

-

0000-DRG-WW-0509

-

TO

PROJECT No.

DRAWING No.

REV.

A0

SHEET

1

OF

1

ORIGINAL PAGE SIZE

FILE No.